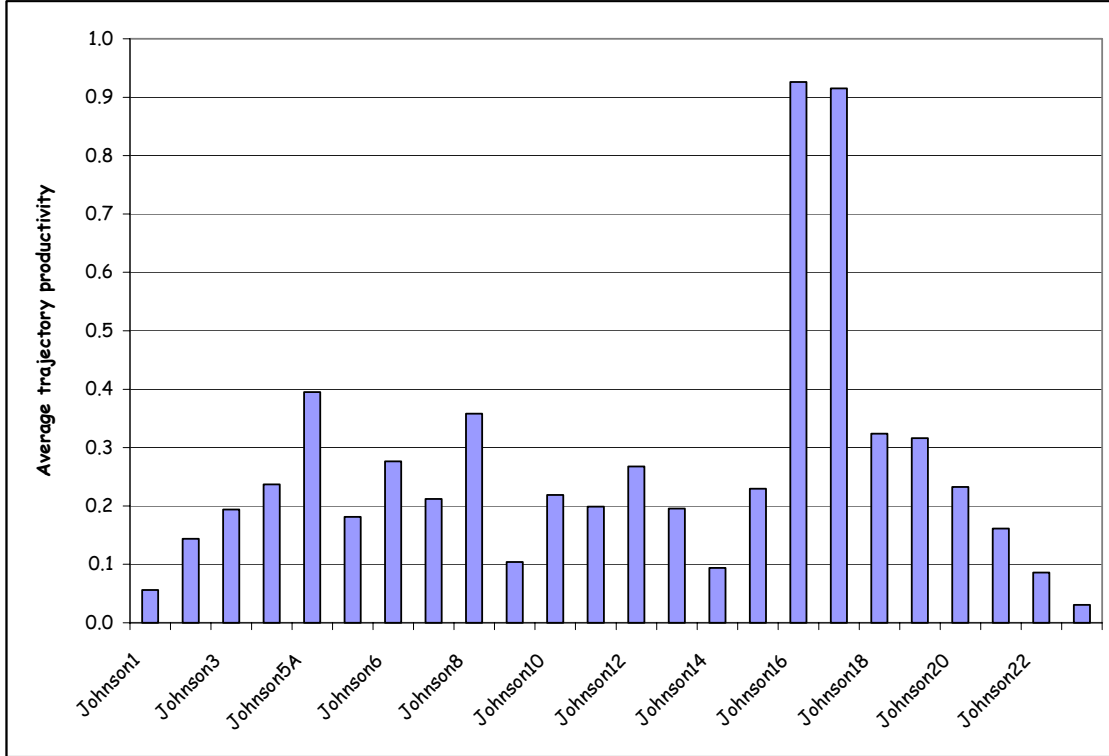


Figure 13. EDT Model Results for Steelhead Trajectory Productivity for Johnson Creek Reaches



	NumberTraj	TrajSustainable	DI	Productivity	Capacity	Neq_Abundance
Degraded	1232	0	0.00%	0.00	0.50	0.00
Current	1232	39	3.00%	2.00	41.30	20.60
Restored	1232	1227	100.00%	17.75	411.60	388.40