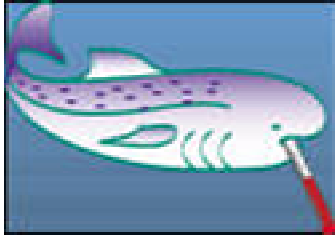


Water Temperature



Back Ground

If temperatures rise, they can have a negative effect on stream life.

Have students suggest things that will change the temperature of water in a stream. Possible answers could be:

- warm weather
- lots of sunlight
- shallow water
- slow water movement
- little shade (few plants beside the water)
- hot water put into the stream (by local industry)

Ask students to think of ways that an increase in temperature might affect the stream. Possible answers could be:

- less oxygen is dissolved in water
- more plants can grow
- more algae will grow (slime)
- some fish and insects will die
- some bacteria can grow better.

Procedure

Ask students what they think temperature is. Have students put their hands or feet into the water and get them to estimate the temperature they think the water in the stream is:

Very cold Cold Warm Hot Very hot

Ask students how they would measure temperature. Then show students the thermometer and either demonstrate how to use it or have one of the students measure the temperature for you.

Put the number into one of the categories listed above.