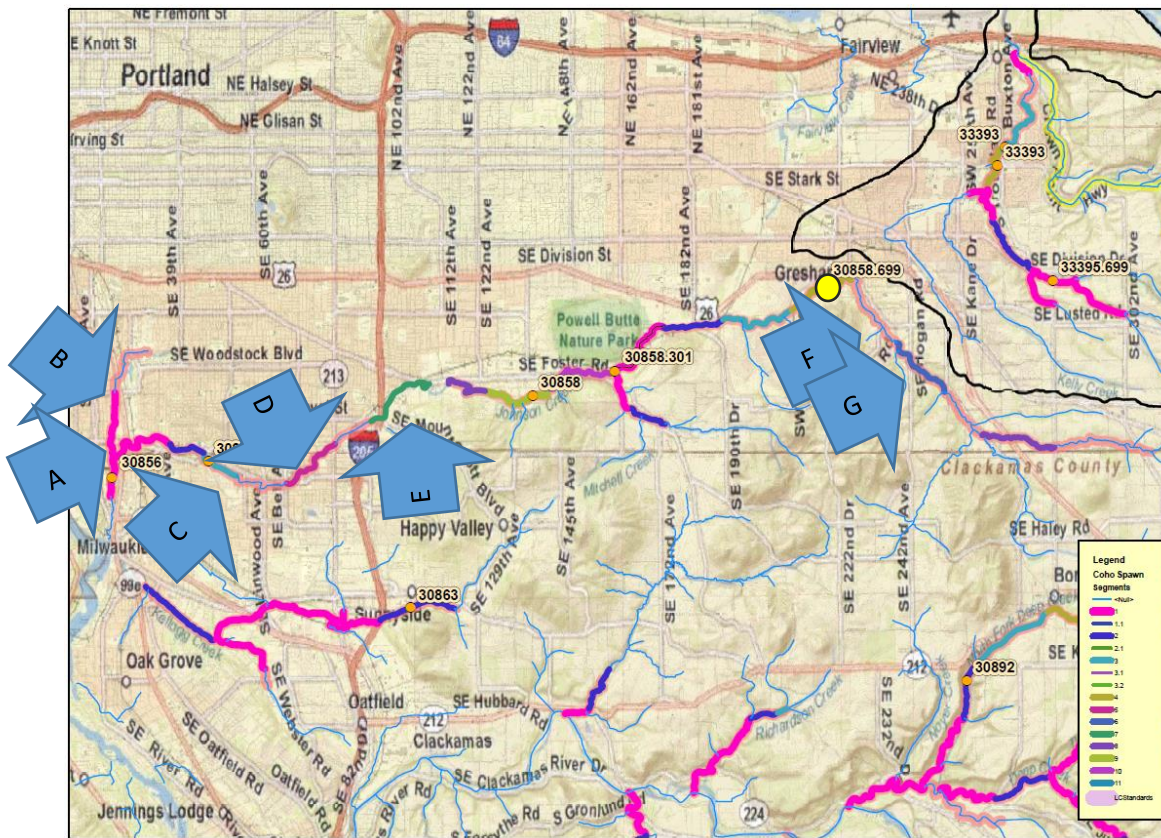
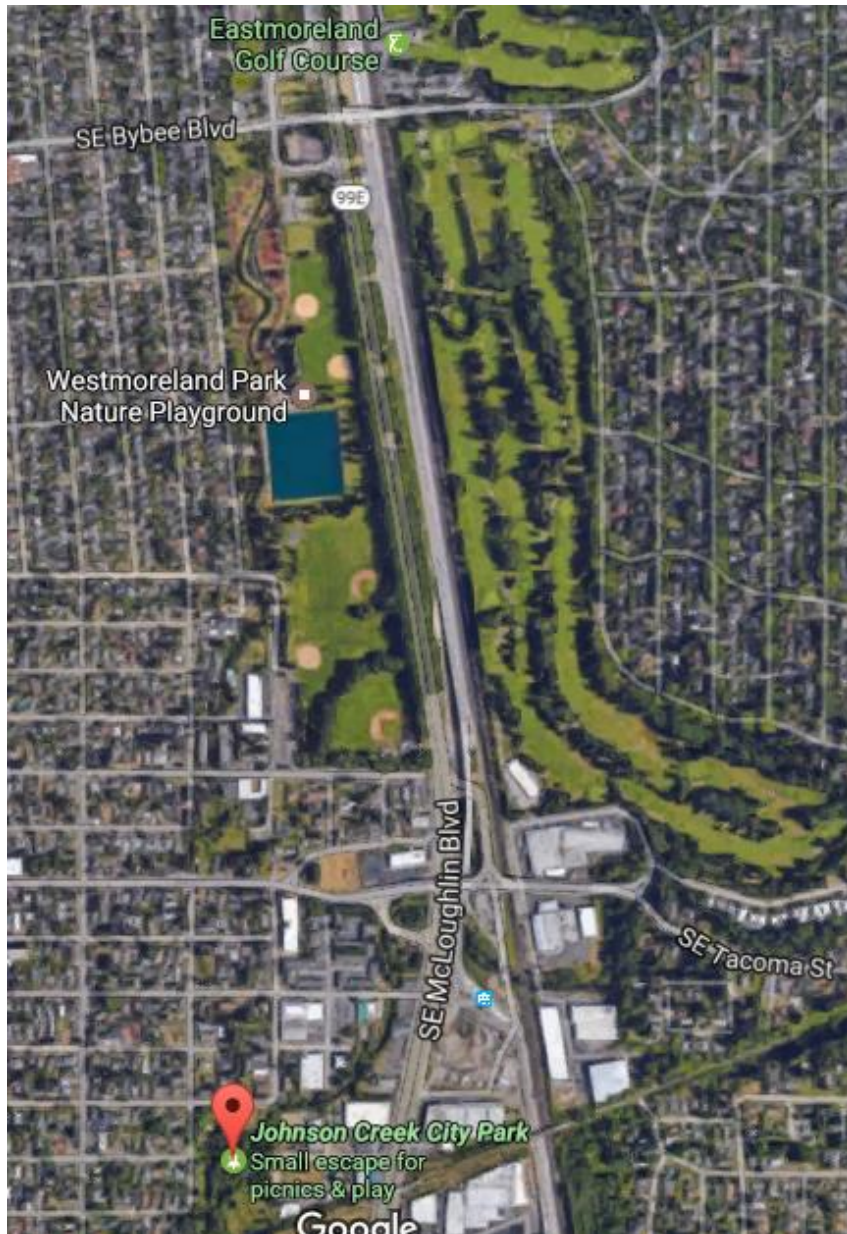


## 2017 Lamprey/Steelhead Survey Reaches

- A. **Crystal Springs Creek, from Johnson Creek Park to Bybee Blvd** (ODFW 30857 #1)
  - B. **Crystal Springs Creek, from Bybee Blvd to Reed Canyon Lake** (ODFW 30857 #2)
  - C. **Tideman-Johnson Park** (ODFW 30858.0 #2)
  - D. **Luther Rd.** (ODFW 30858.0 #5)
  - E. **Foster Floodplain**
  - F. **Liberty Rd. driveway bridge to Palmbiad/SE 252<sup>nd</sup>** (ODFW 30858.7 #6)
  - G. **Palmbiad/SE 252<sup>nd</sup> to SE 262<sup>nd</sup>/Badger Creek Confluence (approx. SE 262<sup>nd</sup>)** (ODFW 30858.7 #7)
- Stationary Observation Site: **Main City Park Bridge, Gresham**

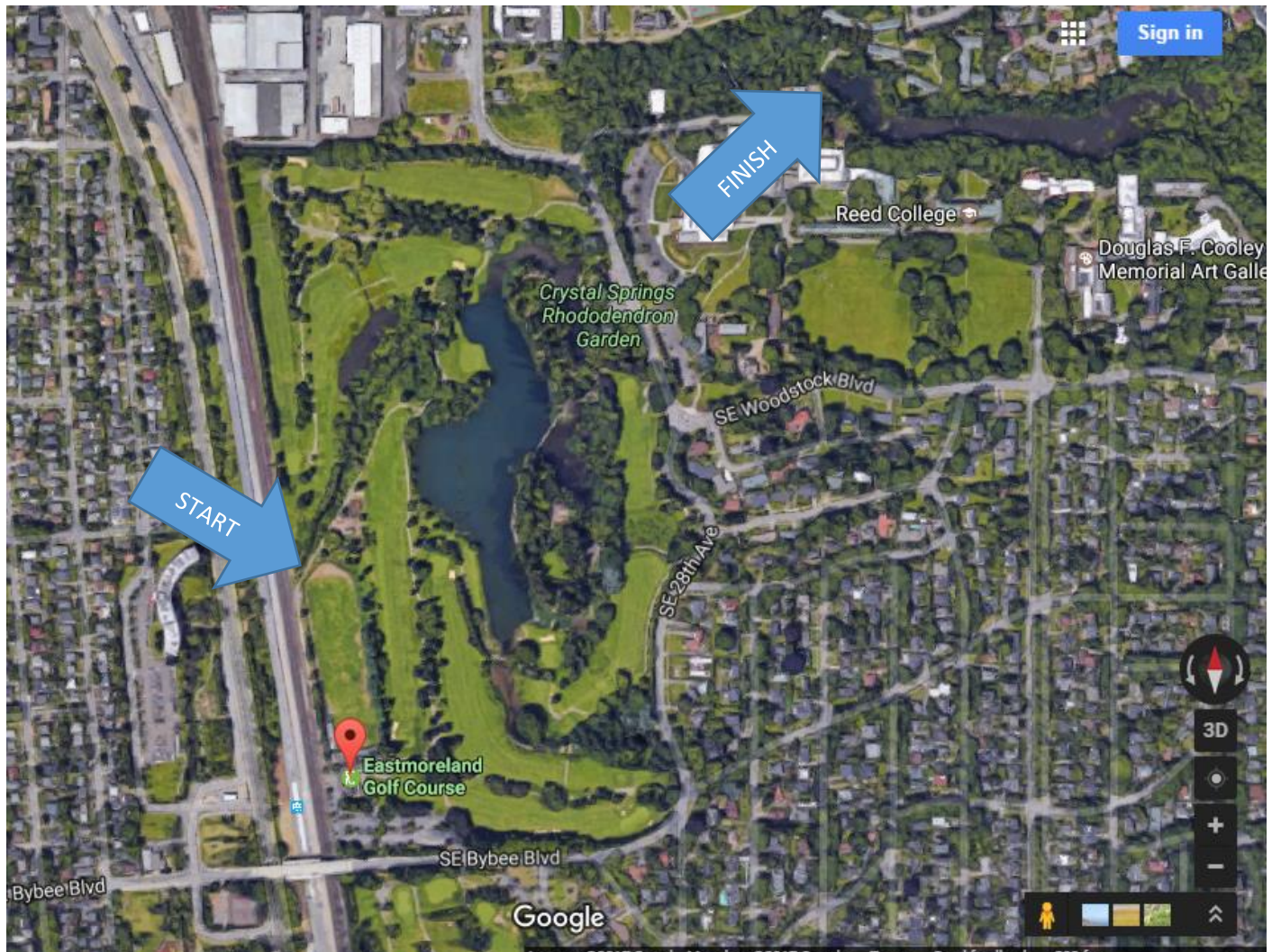


**A. Crystal Springs Creek, from Johnson Creek Park to Bybee Blvd (ODFW 30857 #1)**



Start at Johnson Creek Park, located at SE 21<sup>st</sup> and Marion, Portland, OR. Look in Crystal Springs confluence area with Johnson Creek, then proceed upstream looking carefully in Crystal Springs wherever you can see it from bridges. You may walk along the creek from SE Umatilla to SE Spokane Street, looking in from the banks. It may get pretty mucky from SE Tacoma to SE Spokane. Then, walk upstream, looking in at bridge crossings again. The newly restored section through the park is too deep in parts to walk, so stay on trails.



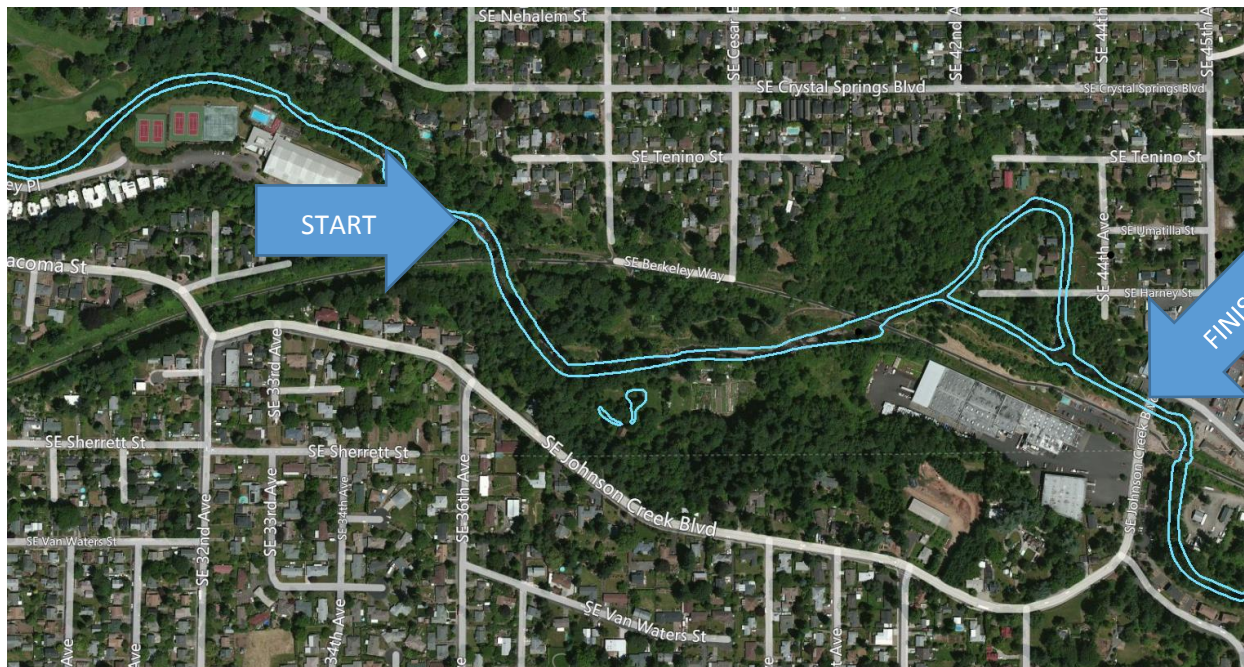


## B. Crystal Springs, Bybee to Reed Canyon Lake

Start at Bybee Blvd, you can park in the parking lot near Westmoreland Park or at the Eastmoreland Golf Course. Walk on the east side (front) of the Golf Course building. You will walk around the driving range cages. Then, curve west toward the MAX train tracks. You will meet up with the creek coming from a culvert. There is a No Trespassing sign that indicates the end of the MAX property. Begin walking upstream from here. The water is shallow and mostly bank-walkable. You will then come to a small lake with two tributaries, take the west tributary that leads to the Reed Canyon until you hit the fish ladder to Reed Lake. Return to your car.

## B. Tideman-Johnson Park (ODFW 30858.0 #2)

Park at the end of 37th Ave (south from the Intersection of SE 37<sup>th</sup> and Tenino). Walk South down the paved hill to the Springwater Corridor. Turn right upon reaching the T in the trail. Walk west 50 meters from the T to a set of bridges. Start survey at the lower (northern) footbridge. Survey upstream 0.55 mi to SE 45th PL bridge. The water becomes deep at the bridge, get out and survey from the banks until you reach the dam/waterfall. Follow the south fork (on your right) and continue to survey from the banks until you reach Johnson Creek Blvd. Exit to parking area on the right. Take the Springwater Corridor Trail back to where you parked.





### C. Foster Floodplain

From SE Foster Rd, turn south into the Foster Floodplain parking lot (just east of where the Springwater Corridor Trail crosses Foster). A short walking trail goes across the creek over a footbridge; follow the paved trail until the split rail fence on your left ends, then walk in toward the creek. The banks are mostly easy to walk, despite some dense growth of alders in some places. There were a couple of homeless camps in July 2016; if you come across any, give them plenty of space. End when you reach SE 112<sup>th</sup> Ave; you can walk back to the parking lot along 112<sup>th</sup> (safest to cross the road and use the sidewalk, since there isn't one on the west side) and the sidewalk on Foster.



Park in the residential neighborhood NW of the city park, such as near the crossroads of SE 77<sup>th</sup> Ave. & SE Springwater Dr. in Portland. Walk downhill (SE) to the Springwater Trail, and down the trail to the downstream (SW) end of the park. (When facing downhill toward the stream from the trail, the water flows from your right to your left, toward Luther Rd.) Enter the water near the end of the park, near the Start arrow on the map. Walk upstream to near the Finish arrow at the other end, around the Luther Rd. bridge. This is a short stretch, but watch your footing and use walking poles—the substrate is cobble and boulder, often covered in a slippery film, and there are some deep holes. Walk along the banks if necessary.





### E. Liberty Rd. driveway bridge to Palmblad/SE 252<sup>nd</sup> (ODFW 30858.7 #6)

From the intersection of I-205 and Hwy 26 (Powell Boulevard) in Portland, go east on Hwy 26 8.8 mi to Palmquist Rd and turn right. Go 0.8 mi to Roberts Avenue and continue straight. Go 0.2 mi to Liberty Avenue and turn left. Park along Liberty Ave near the Springwater Trail crossing. Walk 0.1 mi further to a bridge over Johnson Creek and park. Access creek at bridge. Start sign is mid-creek downstream side of bridge. From bridge, survey upstream 1.02 mi to the Palmblad Rd bridge crossing. Please look up the first tributary stream that flows into Johnson Creek on your right; this is Hogan Creek. This area where Hogan Creek enters Johnson Creek is some of the best potential spawning areas in our surveys. You can walk back to your car along the Springwater Trail, or stash a shuttle vehicle at SE 252<sup>nd</sup>/Palmblad Rd.



**F. Palmblad/SE 252<sup>nd</sup> to SE 262<sup>nd</sup>/Badger Creek Confluence (approx. SE 262<sup>nd</sup>) (ODFW 30858.7 #7)**

You can park at a gravel pullout on Telford Rd at the intersection with 252<sup>nd</sup> (yellow dot on map) and walk south to the start point; or, you can park at the upstream end of the survey and walk the Springwater trail to where it crosses 252<sup>nd</sup>, then south on 252<sup>nd</sup> to the start point. The starting point is where the creek passes under 252<sup>nd</sup>.

Facing south at the starting point, you'll survey upstream (to your left, eastward). Although it starts out heavily forested, this site should be largely bank-walkable especially on the left bank (N/NE); you might need to cross to the right bank (S/SW) occasionally. The first confluence you come to (past a large log fallen over the creek) is not the Badger Creek Confluence (see map). End the survey where Badger Creek enters Johnson Creek on your right (if facing upstream); you'll be very close to the Springwater trail. This is also where 262<sup>nd</sup> would cross Johnson Creek, just upstream of a driveway bridge over Johnson Creek; it's the upstream end of Bob Roberts' property, who has given us permission to survey it.





**Stationary Observation Site: Main City Park Bridge, Gresham.**

Gresham's Main City Park has a bridge that Johnson Creek passes under. Tsuru Island is near this bridge. This is a stationary observation site.

