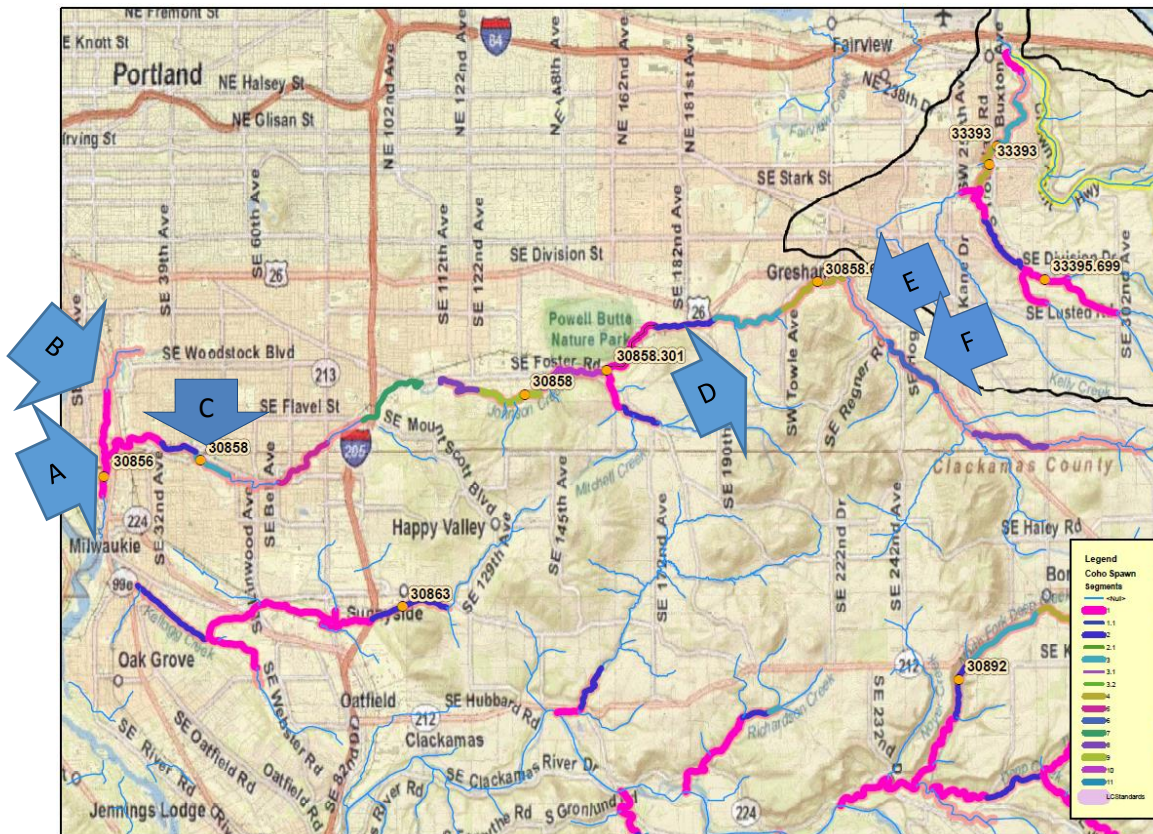
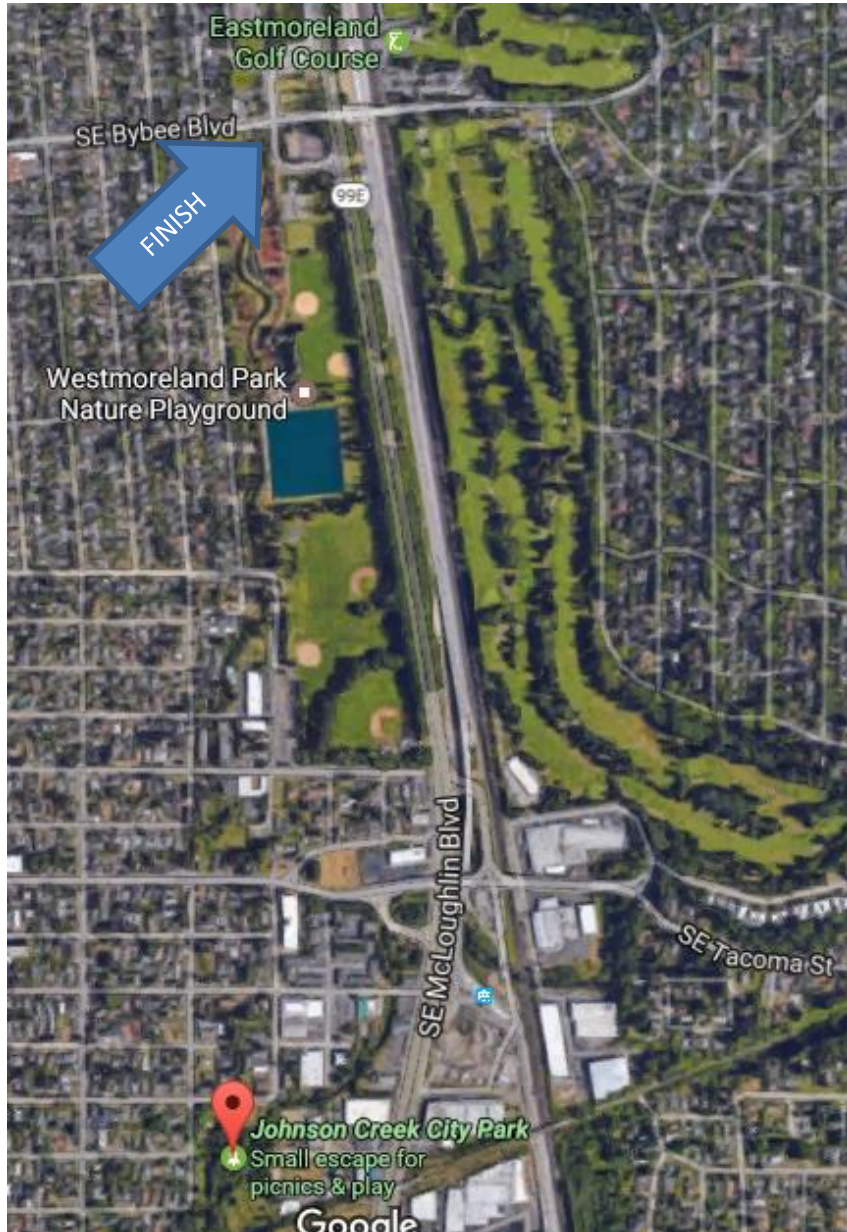


2018 Lamprey & Steelhead Survey Reaches

- A. Crystal Springs Creek, from Johnson Creek Park to Bybee Blvd (ODFW 30857 #1)
 - B. Crystal Springs Creek, from Bybee Blvd to Reed Canyon Lake (ODFW 30857 #2)
 - C. Tideman Johnson Natural Area
 - D. Butler Creek
 - E. Liberty Rd. driveway bridge to Palmbiad/SE 252nd (ODFW 30858.7 #6)
 - F. Palmbiad/SE 252nd to SE 262nd/Badger Creek Confluence (approx. SE 262nd) (ODFW 30858.7 #7)
- Stationary Observation Site: Main City Park Bridge, Gresham

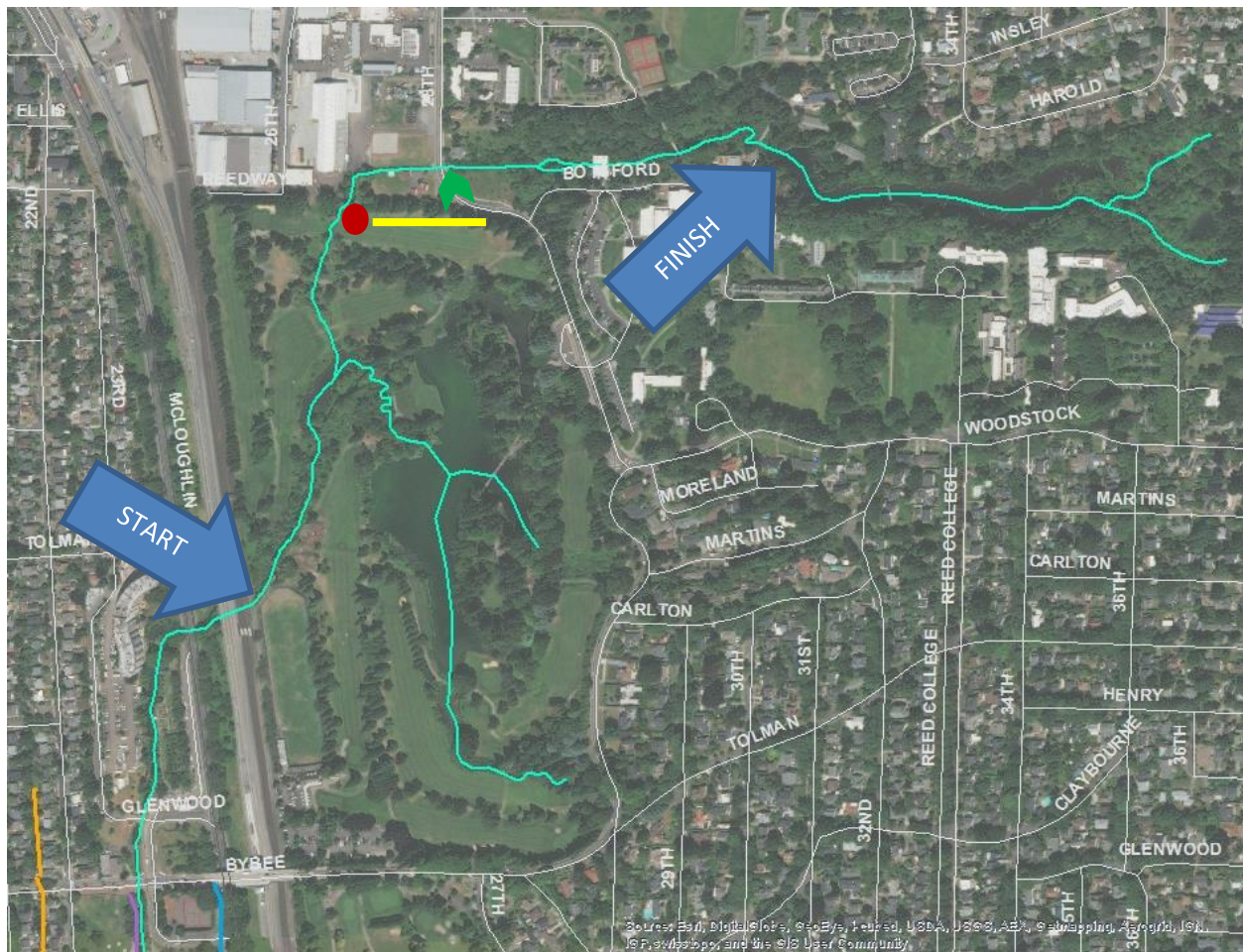


A. Crystal Springs Creek, from Johnson Creek Park to Bybee Blvd (ODFW 30857 #1)



Start at Johnson Creek Park, located at SE 21st and Marion, Portland, OR.

At Johnson Creek Park, start where Crystal Springs flows into Johnson Creek. Walk north along the stream through Johnson Creek Park. You can begin following the creek again where it crosses under SE Umatilla just east of 21st; it's viewable from the overlook at the corner of 21st and Umatilla, then flows parallel to SE 21st until you come to SE Spokane St (follow the paved path north of Tacoma). Check the bridge crossings at SE Nehalem and SE Miller, then walk east to SE 23rd Ave (walk north to Lambert St, then turn right). Then walk along the banks through Westmoreland Park, where vegetation allows; you may prefer to walk on trails. Westmoreland has seen nutria presence and their tunneling may be destabilizing the banks, so remember to check your footing. When you reach Bybee, you have completed the stretch.



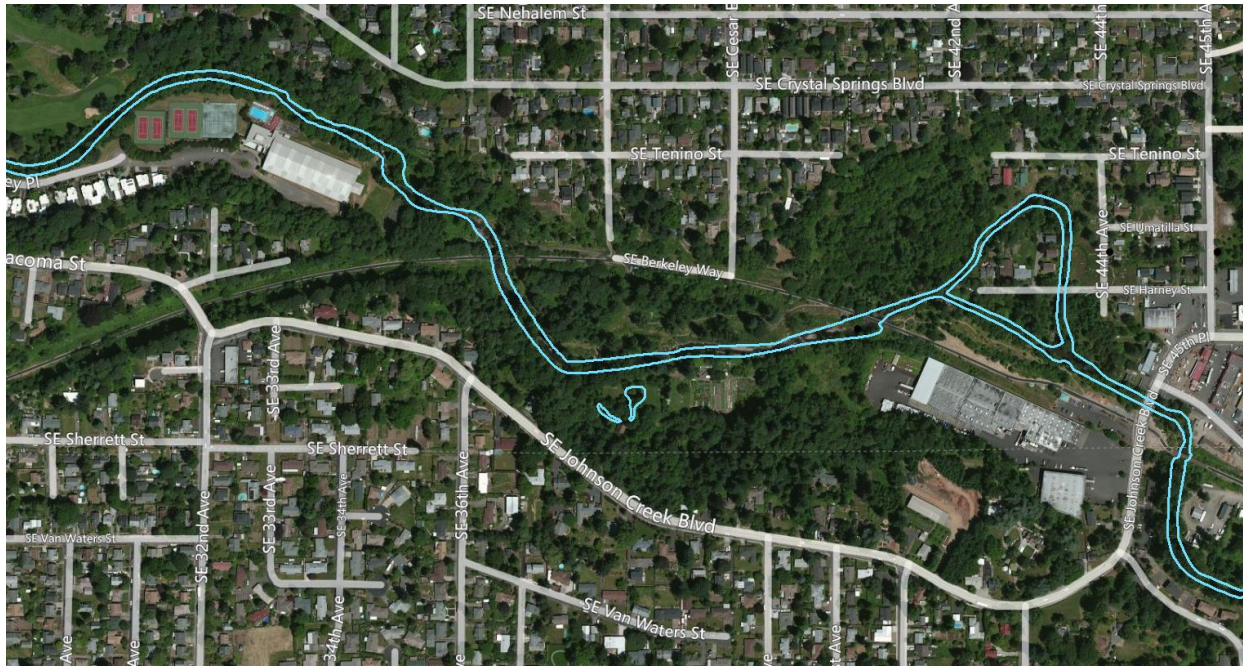
B. Crystal Springs, Bybee to Reed Canyon Lake

You could set up a shuttle car at either end of this survey if you'd like – all meet at the end of reach parking spot, then carpool to beginning of reach.

Start at Bybee Blvd, you can park in the parking lot near Westmoreland Park or at the Eastmoreland Golf Course. Walk on the east side (front) of the Golf Course building. You will walk around the driving range cages. Then, curve west toward the MAX train tracks. You will meet up with the creek coming from a culvert. There is a No Trespassing sign that indicates the end of the MAX property. Begin walking upstream from here. The water is shallow and mostly bank-walkable; you will come to a small lake with two tributaries, take the west tributary. At the edge of the golf course (red dot), follow golf course (yellow line) to exit onto SE 28th and walk north to re-enter the creek (green arrow). This will skip a reach where we don't have landowner permission. Complete your survey, to the Reed Canyon until you hit the fish ladder to Reed Lake. Return to your car.

C. Tideman-Johnson Park (ODFW 30858.0 #2)

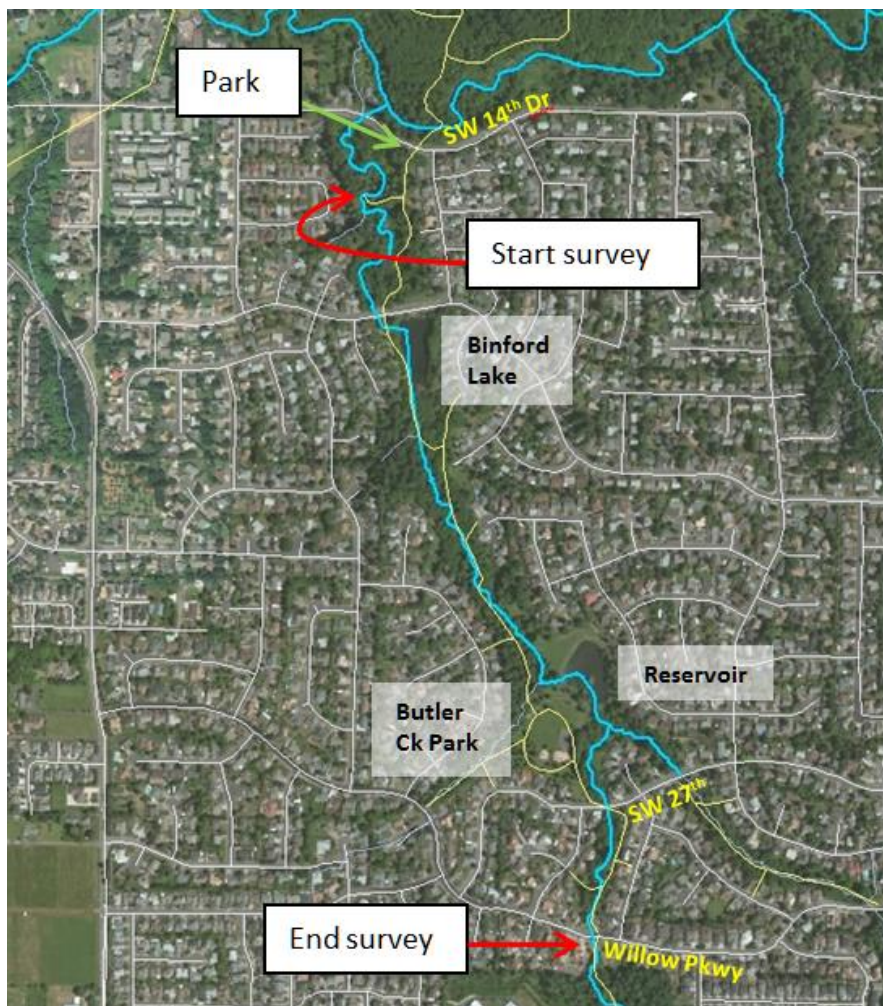
Park at the end of 37th Ave (south from the Intersection of SE 37th and Tenino). Walk South down the paved hill to the Springwater Corridor. Turn right upon reaching the T in the trail. Walk west 50 meters from the T to a set of bridges. Start survey at the lower (northern) footbridge. Survey upstream 0.55 mi to SE 45th PL bridge. The water becomes deep at the bridge, get out and survey from the banks until you reach the dam/waterfall. Follow the south fork (on your right) and continue to survey from the banks until you reach Johnson Creek Blvd. Exit to parking area on the right. Take the Springwater Corridor Trail back to where you parked.



D. Butler Creek

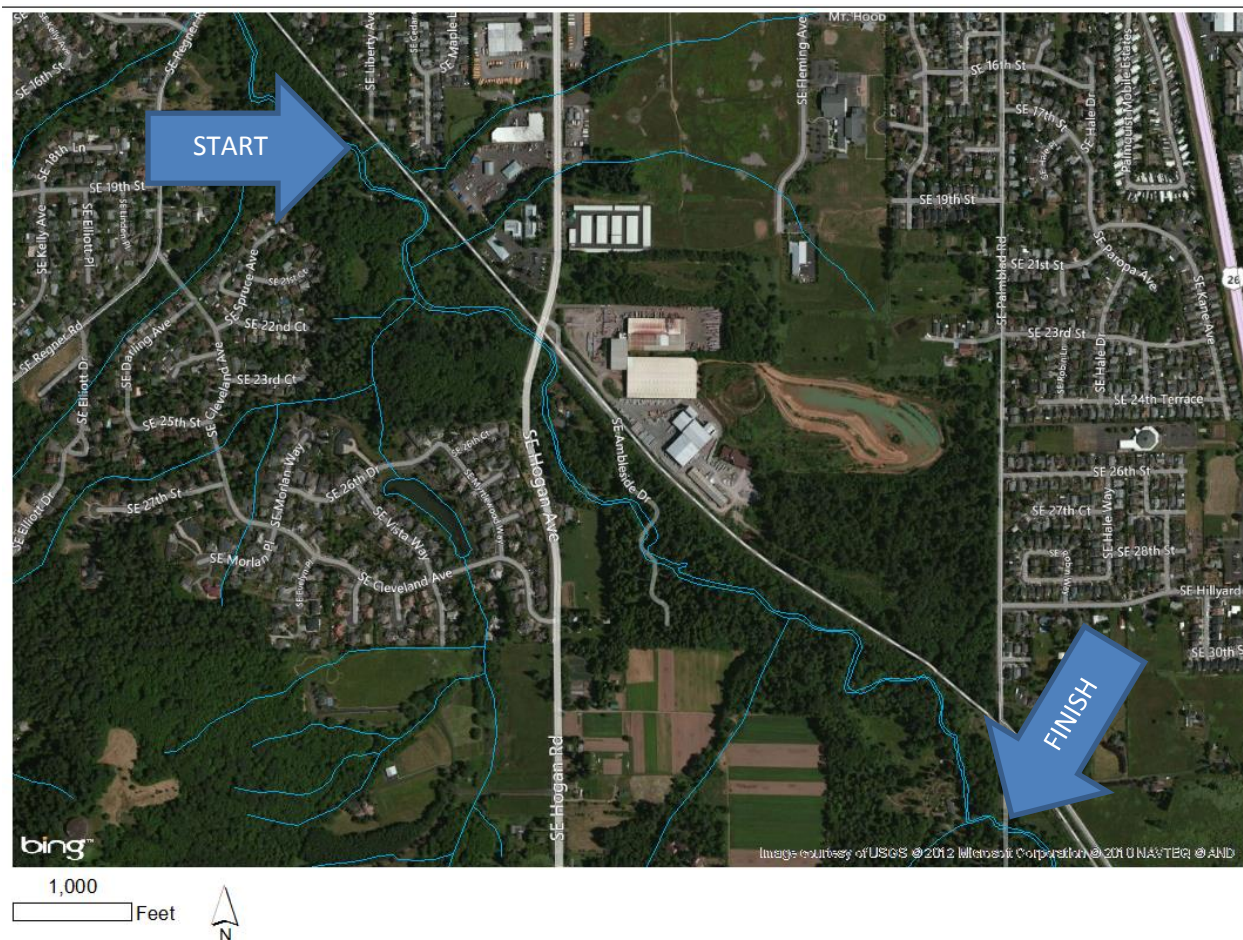
This is a good reach to meet at the end of the survey reach, and then take a shuttle car back to the beginning of the reach. Park at about 2773 SW 14th Drive, Gresham, 97080 (just west of the crosswalk near Binford, to avoid the bus pullout). On the photo below, the yellow lines show the Butler Creek Greenway trail.

Take the trailhead on the south side of 14th (opposite the entrance to Gresham Woods) and walk about 330 feet down the trail to a spur trail that goes down the hill toward the creek. Follow that down and begin your survey. Feel free to walk downstream (north) until you hit 14th, then double back and proceed to survey following the creek upstream. At Binford Lake you'll exit the creek and follow the Butler Creek Greenway Trail along the west side of the lake, following the trail to get back in the creek again. Follow the creek until the reservoir at Butler Creek Park. After getting out near the reservoir, follow the parks' perimeter pathway lined with a fence until you reach the end of the fence, then go around it to access the creek again. Survey until the creek reaches SW 27th; you'll have to exit the park to cross over 27th and resume surveying via the Butler Creek Greenway trail; enter the creek when you're able. End the survey when the creek and greenway trail reach Willow Pkwy.



E. Liberty Rd. driveway bridge to Palmblad/SE 252nd (ODFW 30858.7 #6)

From the intersection of I-205 and Hwy 26 (Powell Boulevard) in Portland, go east on Hwy 26 8.8 mi to Palmquist Rd and turn right. Go 0.8 mi to Roberts Avenue and continue straight. Go 0.2 mi to Liberty Avenue and turn left. Park along Liberty Ave near the Springwater Trail crossing. Walk 0.1 mi further to a bridge over Johnson Creek and park. Access creek at bridge. Start sign is mid-creek downstream side of bridge. From bridge, survey upstream 1.02 mi to the Palmblad Rd bridge crossing. Please look up the first tributary stream that flows into Johnson Creek on your right; this is Hogan Creek. This area where Hogan Creek enters Johnson Creek is some of the best potential spawning areas in our surveys. You can walk back to your car along the Springwater Trail, or stash a shuttle vehicle at SE 252nd/Palmblad Rd.



F. Palmblad/SE 252nd to SE 262nd/Badger Creek Confluence (approx. SE 262nd) (ODFW 30858.7 #7)

You can park at a gravel pullout on Telford Rd at the intersection with 252nd (yellow dot on map) and walk south to the start point; or, you can park at the upstream end of the survey and walk the Springwater trail to where it crosses 252nd, then south on 252nd to the start point. The starting point is where the creek passes under 252nd.

Facing south at the starting point, you'll survey upstream (to your left, eastward). Although it starts out heavily forested, this site should be largely bank-walkable especially on the left bank (N/NE); you might need to cross to the right bank (S/SW) occasionally. The first confluence you come to (past a large log fallen over the creek) is not the Badger Creek Confluence (see map). End the survey where Badger Creek enters Johnson Creek on your right (if facing upstream); you'll be very close to the Springwater trail. This is also where 262nd would cross Johnson Creek, just upstream of a driveway bridge over Johnson Creek; it's the upstream end of Bob Roberts' property, who has given us permission to survey it.

