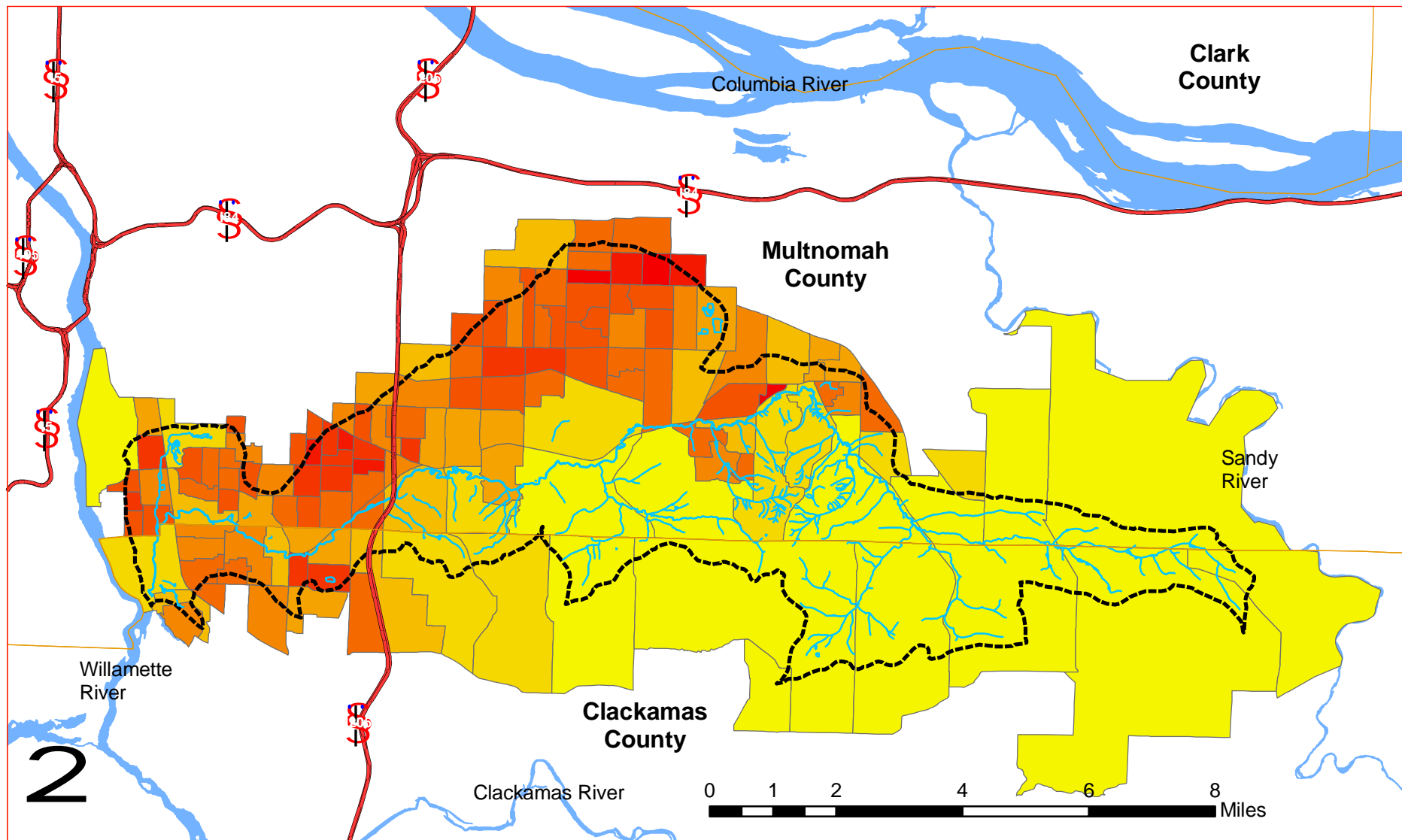


# Johnson Creek Watershed Population Density (by 2000 Census Block Group)



## Legend

----- Watershed boundary

Population / Sq mile	
165.2 - 1302	2440 - 3576
1303 - 2439	3577 - 4712
	4713 - 5849
	5850 - 6986
	6987 - 8123
	8124 - 9259
	9260 - 10400
	10410 - 11530