

Accessing the Centennial Pond Dragonfly Monitoring Site:

The Centennial pond is on an undeveloped 35-acre property accessed from SE Foster Road near 172nd.

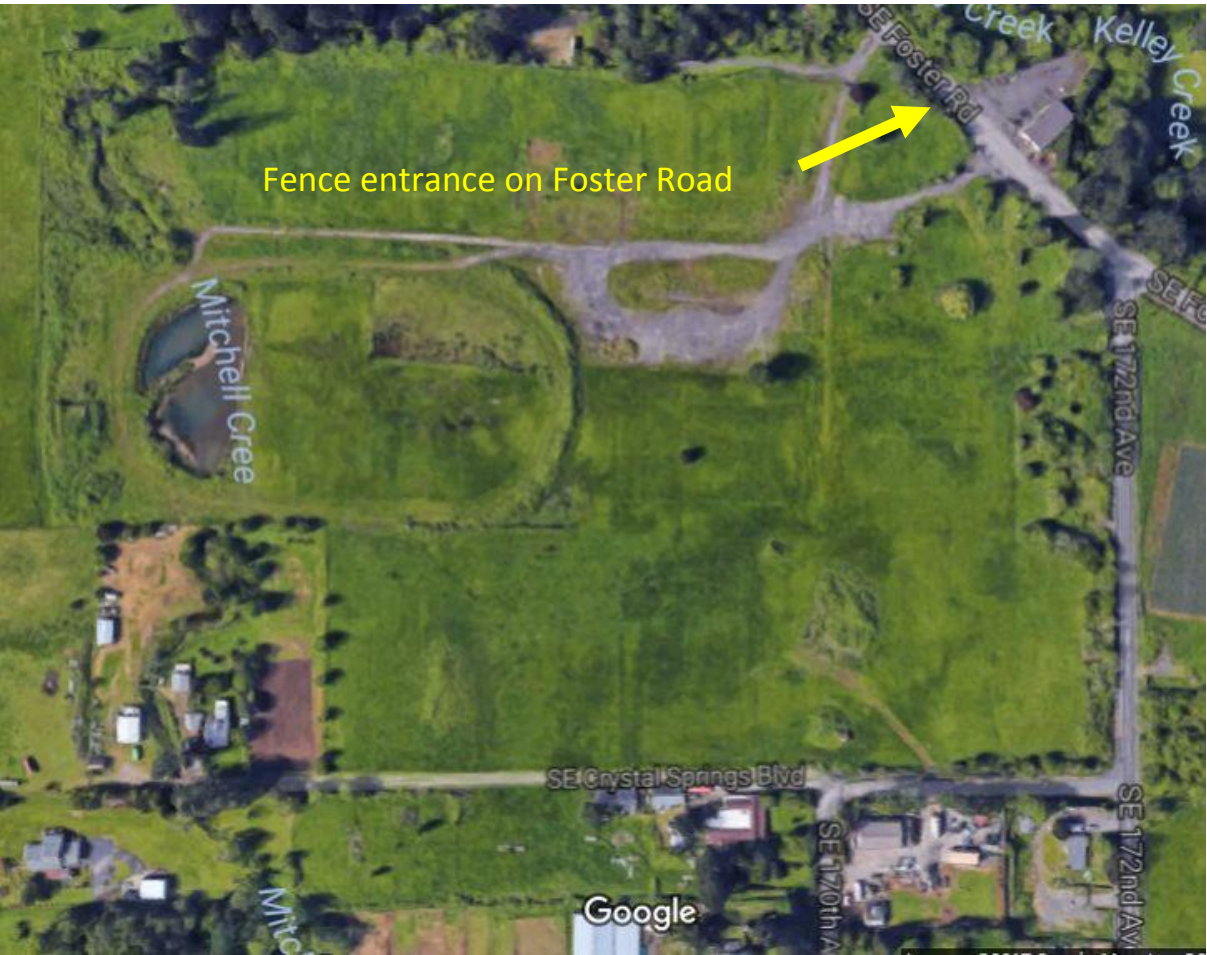
From I-205, head east on Foster. Just before you reach 172nd you will see the Pleasant Valley Grange on your left:



Across Foster Rd on the right you will see this fence:



Park where the white truck is parked. You access the property by walking behind the right end of the fence, indicated by the arrow.



Fence entrance on Foster Road



Google

Imagery ©2017 Google, Map data ©2