A historical survey map of the Portland area from 1852. The map shows the Willamette River, various islands, and surrounding land. Key features include the Vancouver Townsite, Military Reserve, and several buttes like Rocky Butte and Kelly Butte. The map is overlaid with a grid and contains various handwritten and printed labels for land types and geographical features.

CLAIMED BY THE
HUDSON BAY COMPANY
UNDER THE TREATY OF
1846

Survey Map of 1852

Source: Produced for the Metro Region 2040 Project by
Ernest R. Munch, Architects and Urban Planners.
Redrawn in this format by Ruth Cotugno and Emily Wied.

City of Portland Wetland Inventory Project

**What is the news for
Johnson Creek watershed?**

The background of the slide is a blue-tinted photograph of a wetland. In the center, a bird, possibly a heron or egret, stands in shallow water. The surrounding area is filled with tall, dense grasses and reeds. In the background, there are more trees and foliage. The overall scene is a natural, marshy environment.

City of Portland Wetland Inventory Project

- What is a wetland inventory?
- Why is the City conducting the inventory?
- How will the City use the inventory data?
- What did we find in Johnson Creek?

A person is wading through a wetland area, surrounded by tall grass and water. The person is wearing a dark jacket and pants, and is holding a long pole or stick. The background shows a dense forest of trees.

City of Portland Wetland Inventory Project

Phase 1 – Inventory of publicly owned lands

- Current work to be completed Winter 2019

Phase 2 – Inventory of private lands (voluntary)

- Upcoming work, to be completed with the City Stormwater System Plan

What is a wetland inventory?

Secure | <https://pdx.maps.arcgis.com/apps/webappviewer/index.html?id=e70cc8a0603d412eb30c9a0b31eb31d2>

A photograph of a wetland environment. In the center, a large wading bird, likely a Great Egret or a Heron, stands in shallow water. The bird has long, thin legs and a long, pointed beak. It is surrounded by tall, dense grasses and reeds. In the background, there are more trees and foliage, creating a lush, natural setting. The water is calm, reflecting the bird and the surrounding vegetation.

Why is the City of Portland conducting a wetland inventory?

The inventory is being conducted to support the City's existing regulatory and programmatic interests in wetlands and natural stormwater infrastructure.

Example of data discrepancies



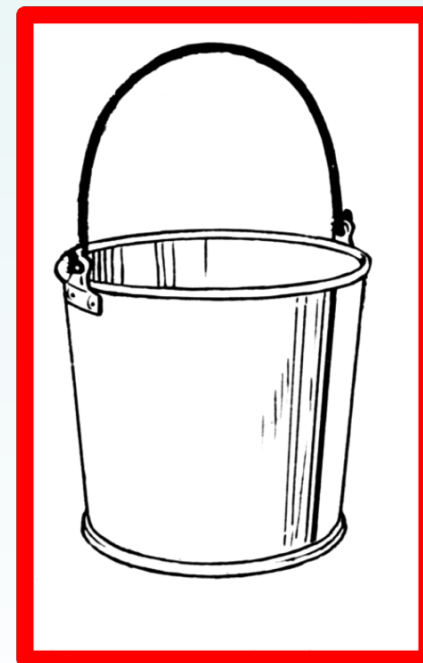
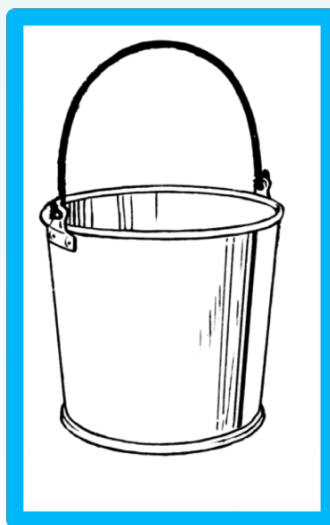
Example of need to update mapping of wetland fill & mitigation sites



0 250 500 1,000 Feet

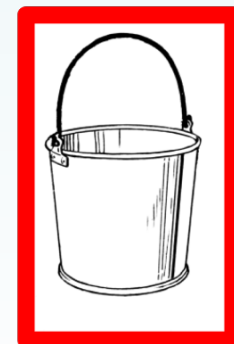
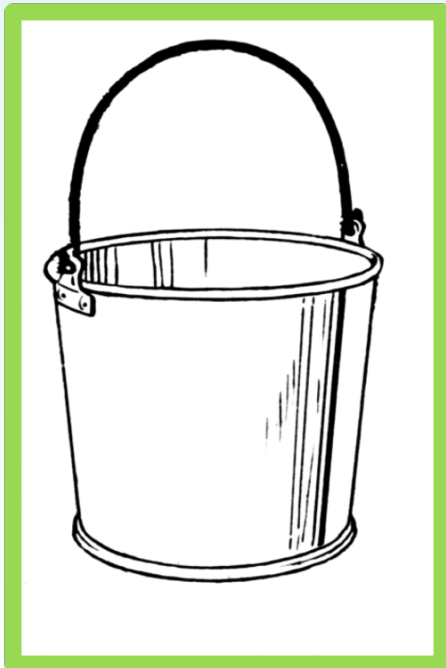
Wetlands Data Confidence circa 2016

High confidence Small volume of data	Medium confidence Medium volume of data	Low confidence Large volume of data
<ol style="list-style-type: none">1. City of Portland Restoration and Enhancement Projects2. RLIS/DSL updates	<ol style="list-style-type: none">1. City of Portland Wetlands Mapping Circa 2010	<ol style="list-style-type: none">1. 2015 NWI mapping2. Topographic Wetness Indicator



Our Goal - Wetlands Data Confidence 2019

High confidence	Medium confidence	Low confidence
<ol style="list-style-type: none">1. City of Portland Restoration and Enhancement Projects2. Ongoing RLIS/DSL updates3. WIP Field Data	Topographic Wetness Indicator prediction tool	Unconfirmed wetland sites (inaccessible for various reasons)

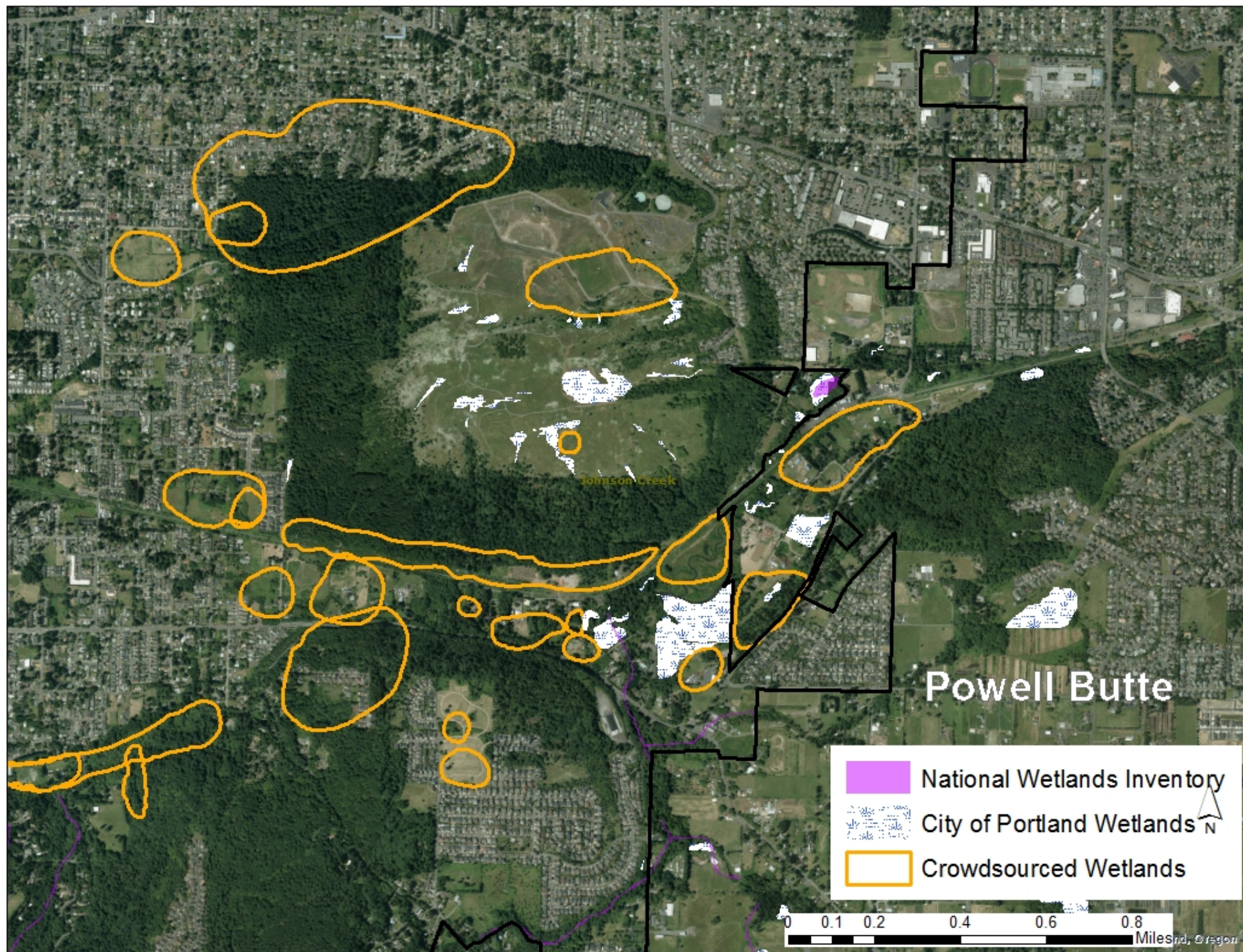


How will the City employ the data?

1. Land use planning
2. Conservation and restoration planning,
3. Restoration projects
 - Design and construction
 - Long term maintenance and adaptive management

A blue-tinted photograph of a Great Egret standing in a wetland area. The bird is positioned in the center, facing right, with its long neck extended. It is surrounded by tall, dense grasses and reeds. In the background, there is a thick line of trees. The water in the foreground is calm, reflecting the bird and the surrounding vegetation.

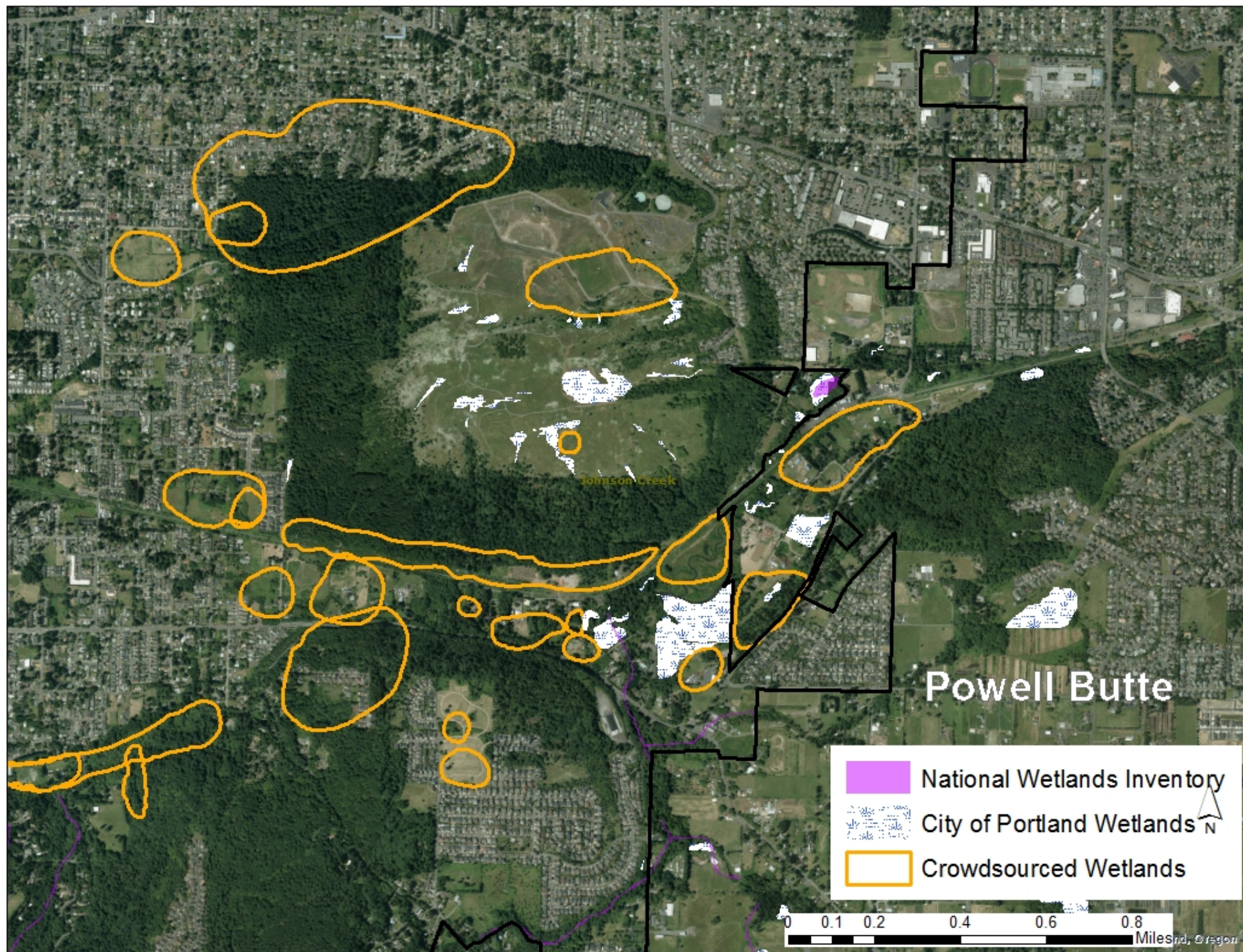
**What wetlands did we find in
Johnson Creek?**

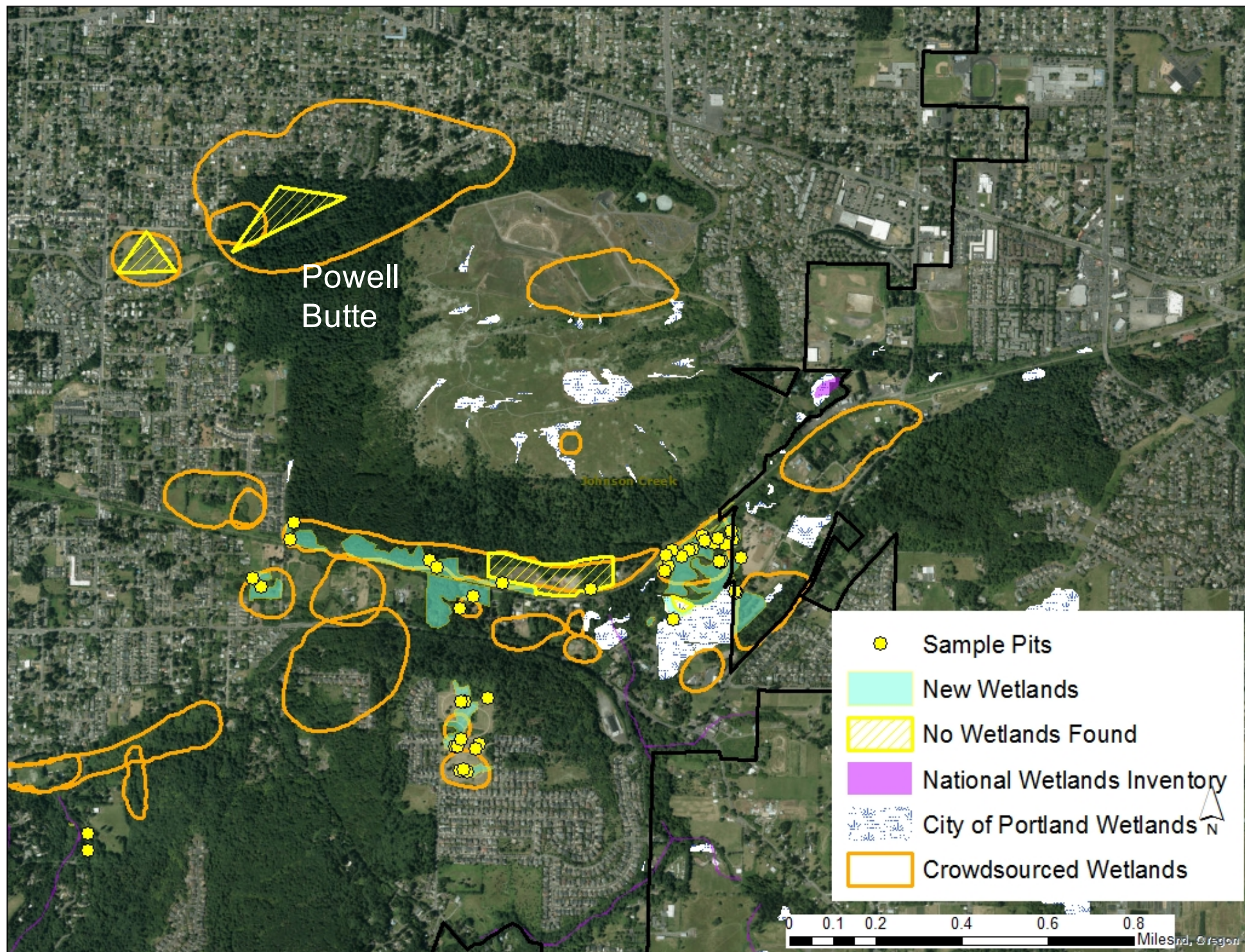


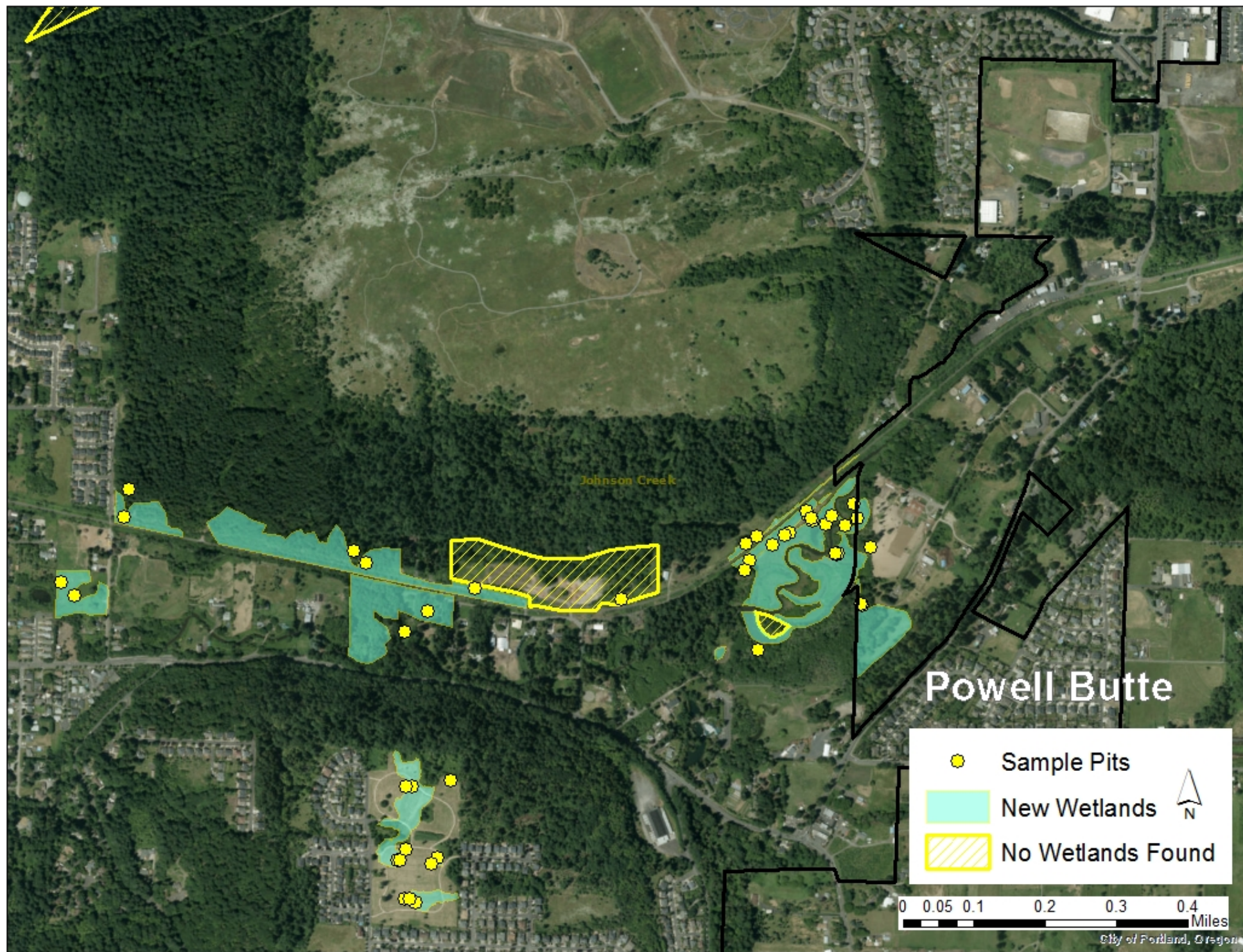
New wetlands in the JC watershed

59 acres of new wetlands in the
City of Portland Wetland Inventory

	# of sites	acres
No wetland found	18	na
Wetland verified	2	1.7
Wetland modified	3	9.5
New wetlands not previously inventoried	29	48.7















Oregon Rapid Wetland Rapid Assessment Protocol

Scores 16 wetland functions

- | | |
|---|--|
| 1. Water Storage and Delay | 9. Anadromous Fish |
| 2. Sediment Retention and Stabilization | 10. Non-Anadromous Fish |
| 3. Phosphorus Retention | 11. Amphibian and Reptile |
| 4. Nitrate Removal & Retention | 12. Waterbird Feeding |
| 5. Thermoregulation | 13. Waterbird nesting |
| 6. Carbon Sequestration | 14. Songbird, Raptor, & Mammal Habitat |
| 7. Organic Matter Export | 15. Pollinator Habitat |
| 8. Aquatic Invertebrates | 16. Native Plant Diversity |

Science Integration Division - WIP Team

Paul Ketcham / Biological Sciences Manager

Mary Bushman / Project Manager

David Helzer / Data Management Task Lead

Jennifer Antak / Field work Task Lead

Chad Smith / Fish Biologist

