

# BEAVER SURVEYS IN JOHNSON CREEK

## *TRENDS AND OBSERVATIONS FROM THREE YEARS OF BEAVER SURVEYS!*

Chuck Lobdell

Restoration Project Manager

Johnson Creek Watershed Council







## Legend

All Dams

Active

0

1

# 2017 Survey Dam Locations

N



8 miles

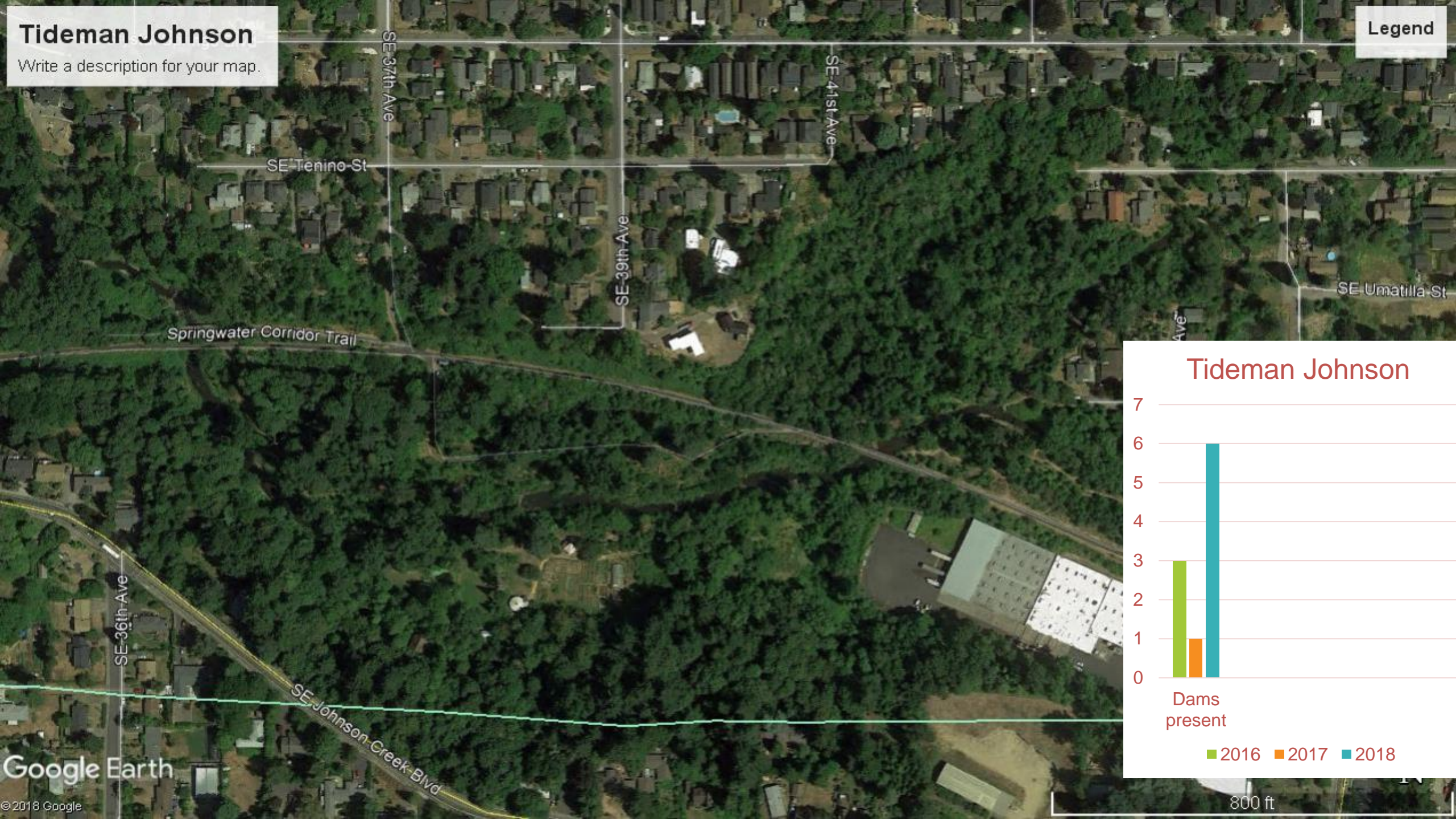
Esri, Esri Community Maps Contributors



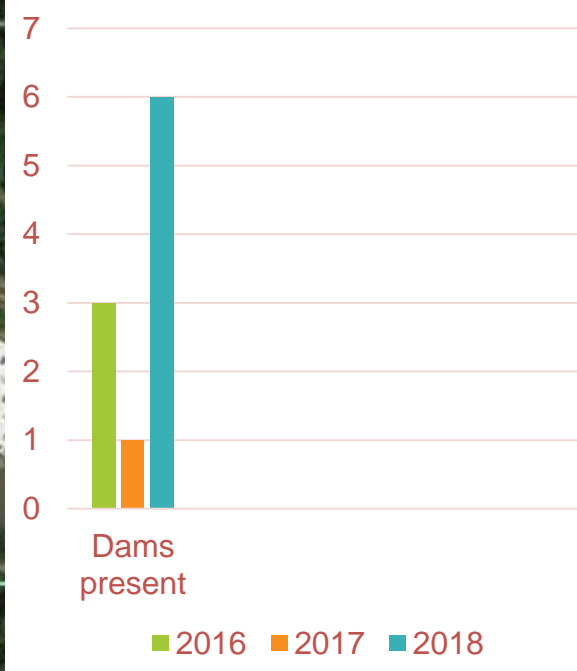
# Tideman Johnson

Write a description for your map.

Legend



## Tideman Johnson

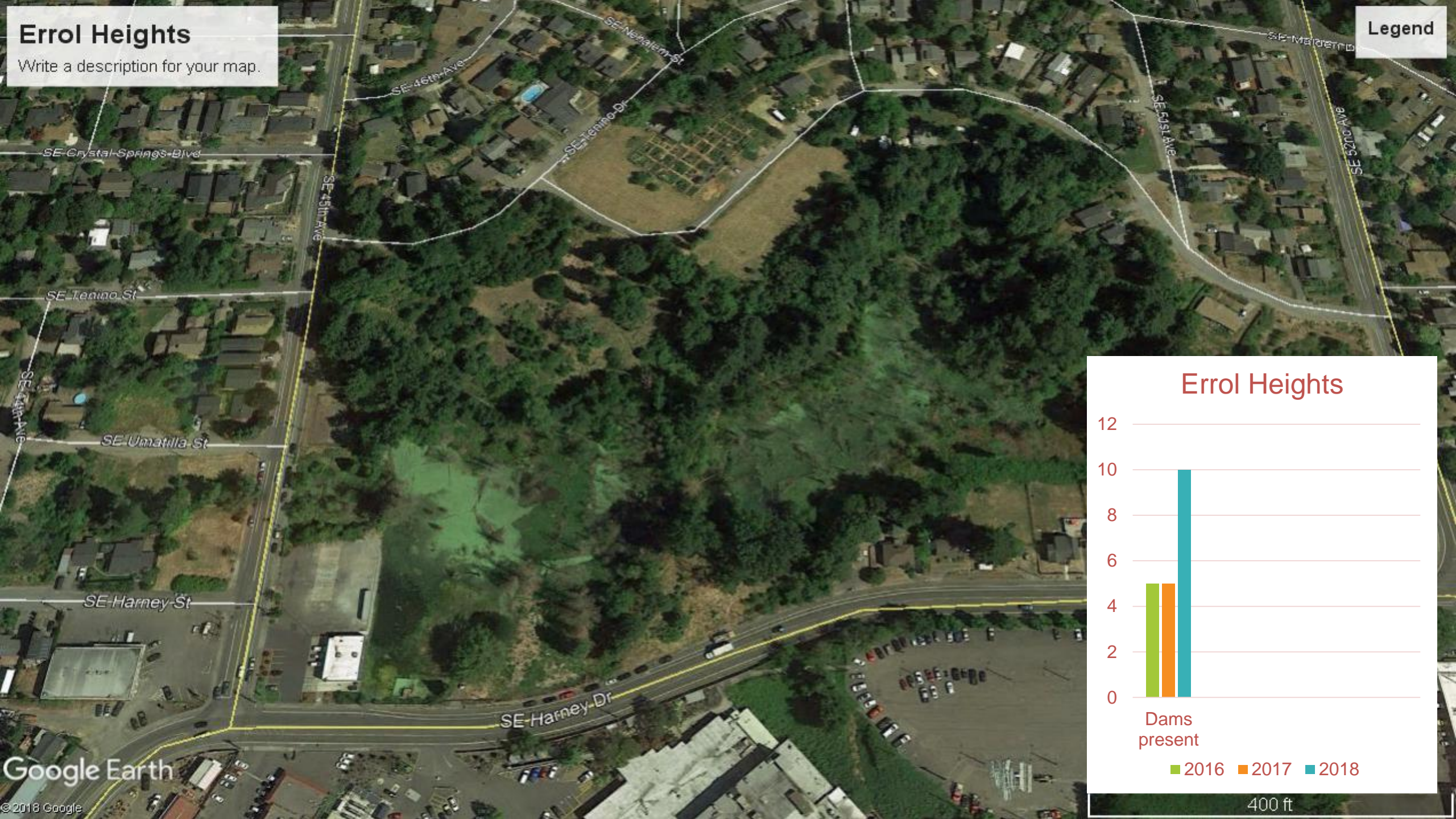




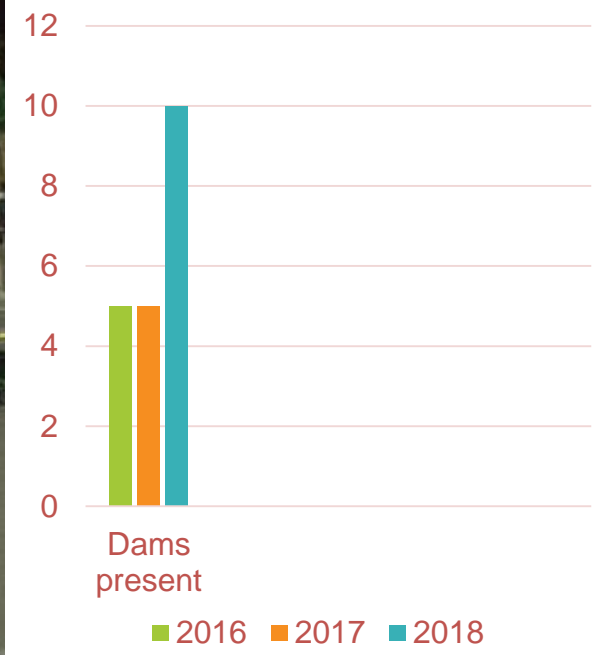
# Errol Heights

Write a description for your map.

Legend



## Errol Heights




400 ft

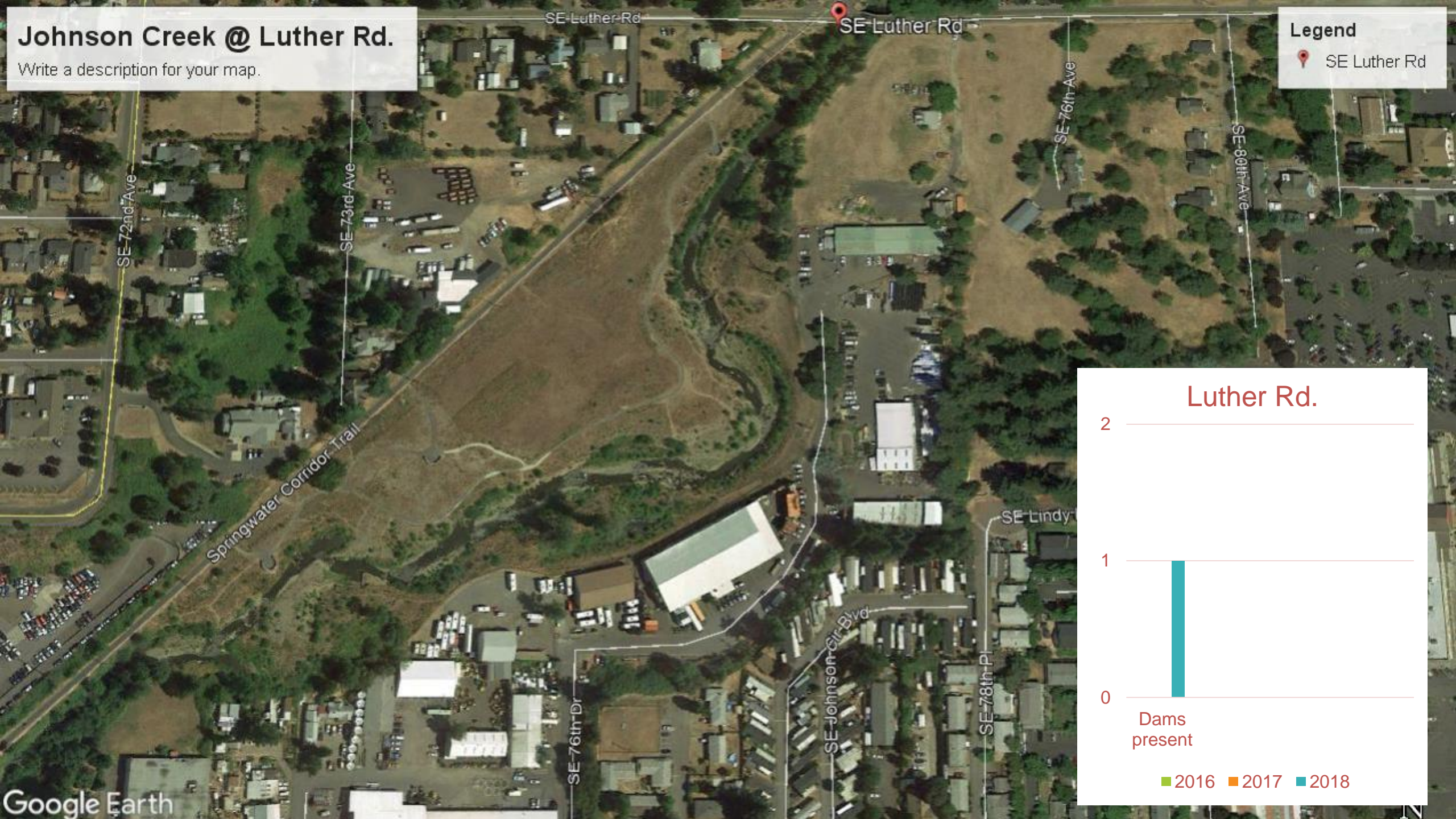


# Johnson Creek @ Luther Rd.

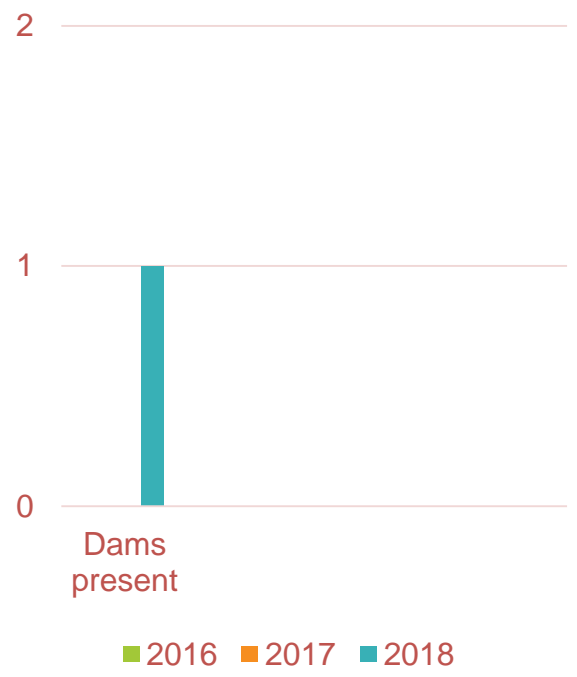
Write a description for your map.

Legend

 SE Luther Rd



## Luther Rd.

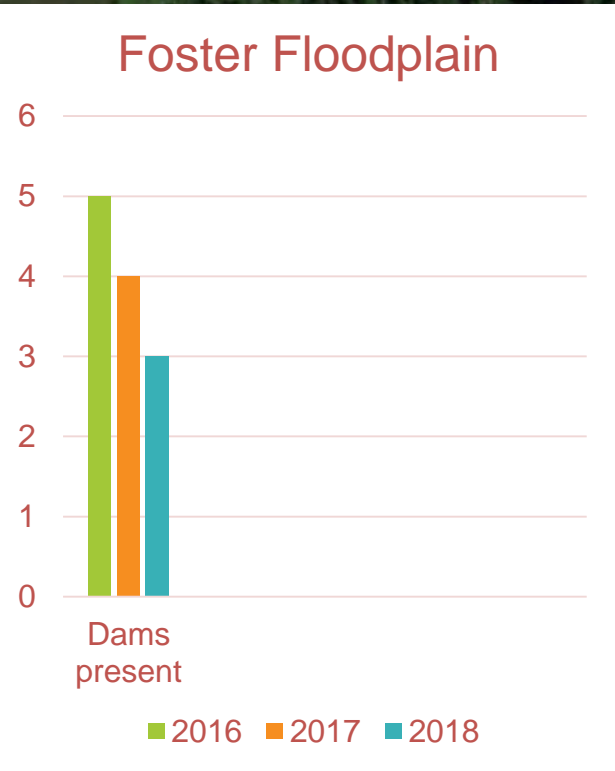




## Foster Floodplain

Write a description for your map.

### Legend






# Kelley Creek to Schweitzer

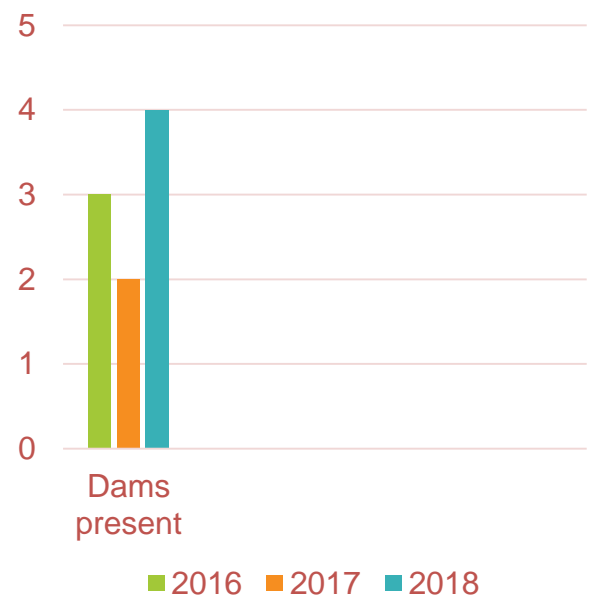
Write a description for your map.

Legend

 SE Luther Rd



## Kelley Cr. to Schweitzer

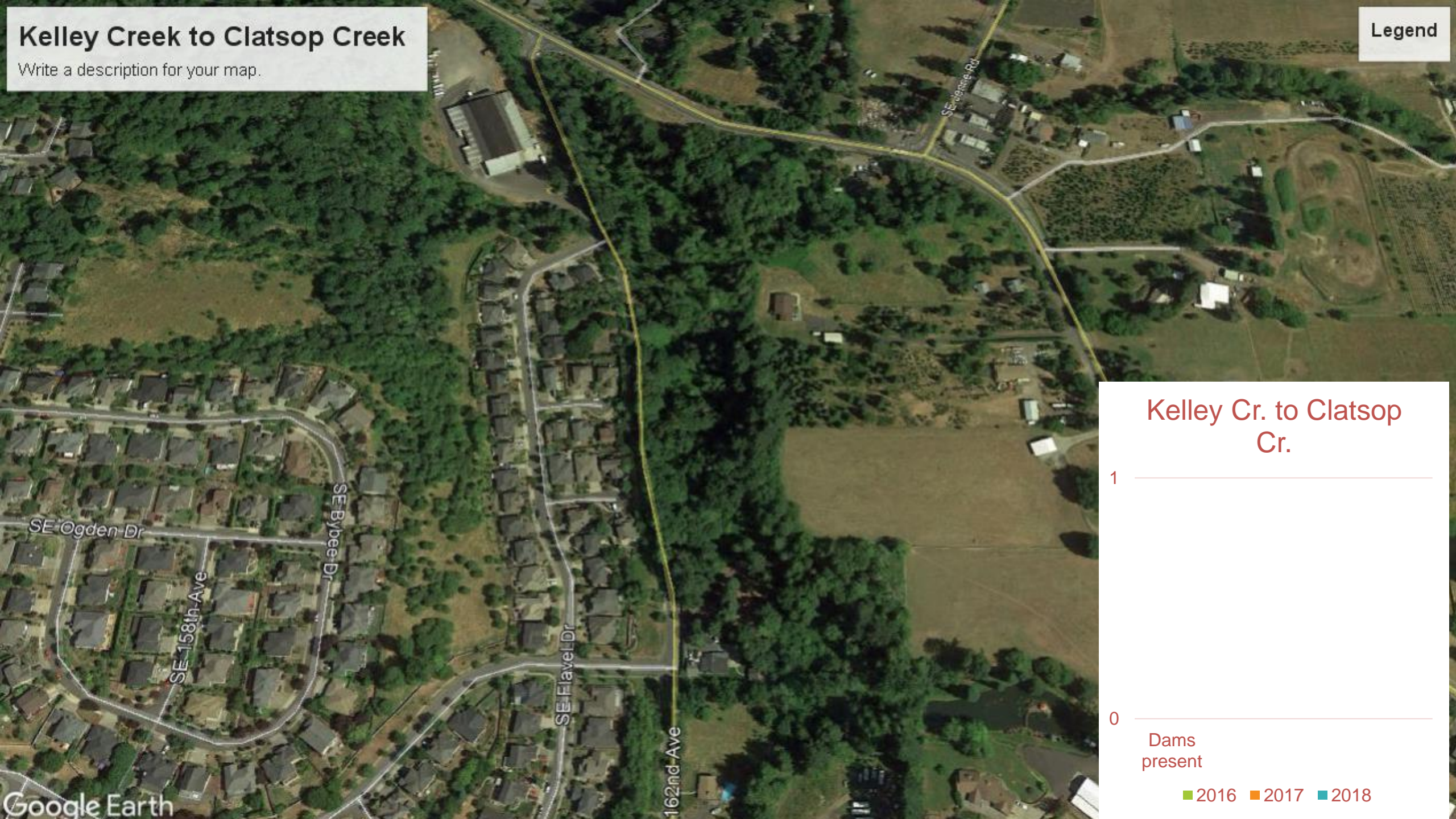




# Kelley Creek to Clatsop Creek

Write a description for your map.

Legend



## Kelley Cr. to Clatsop Cr.



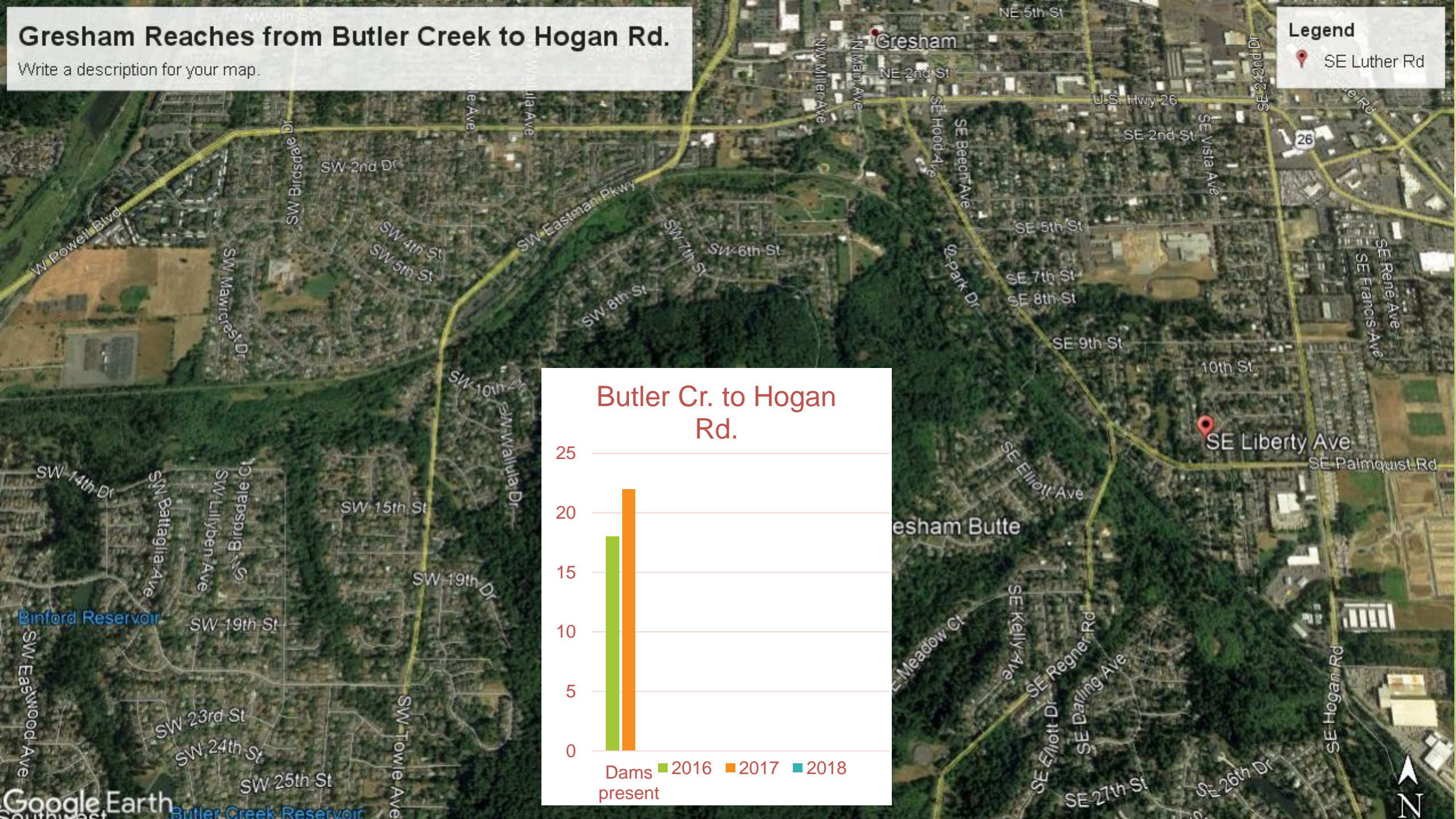
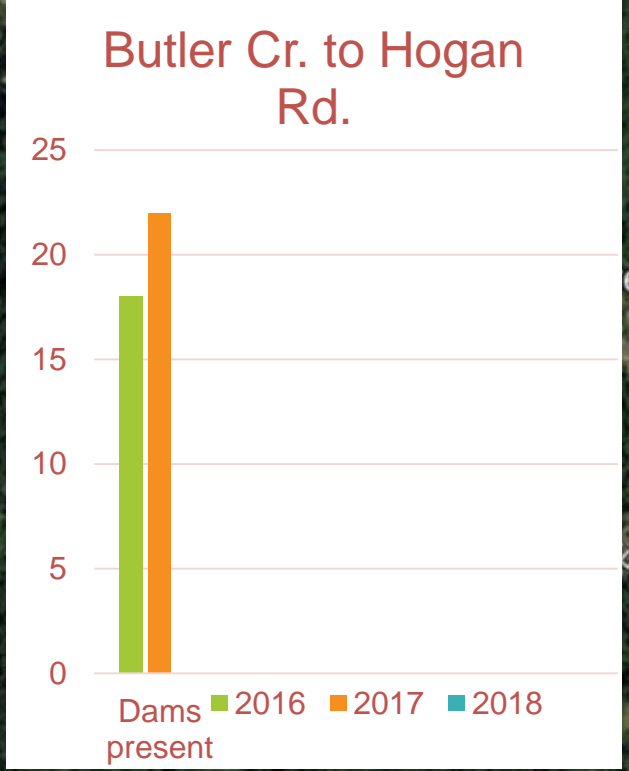


# Gresham Reaches from Butler Creek to Hogan Rd.

Write a description for your map.

Legend

 SE Luther Rd

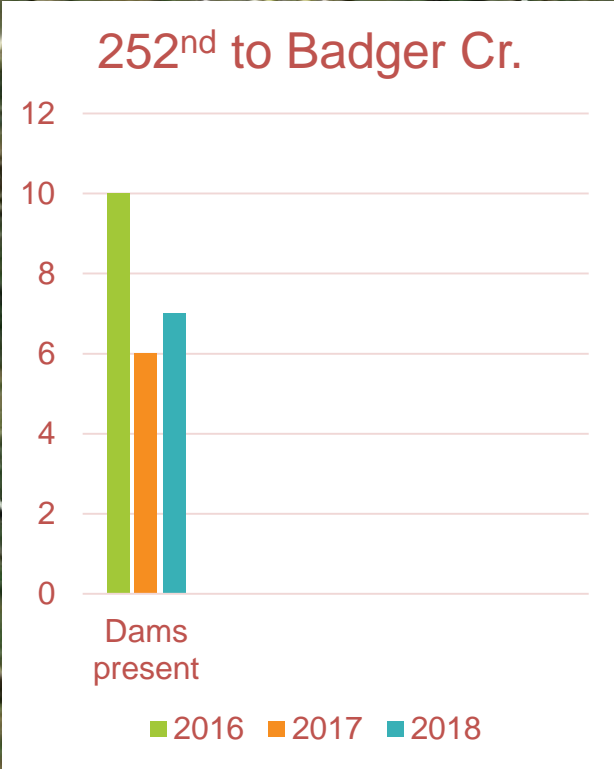
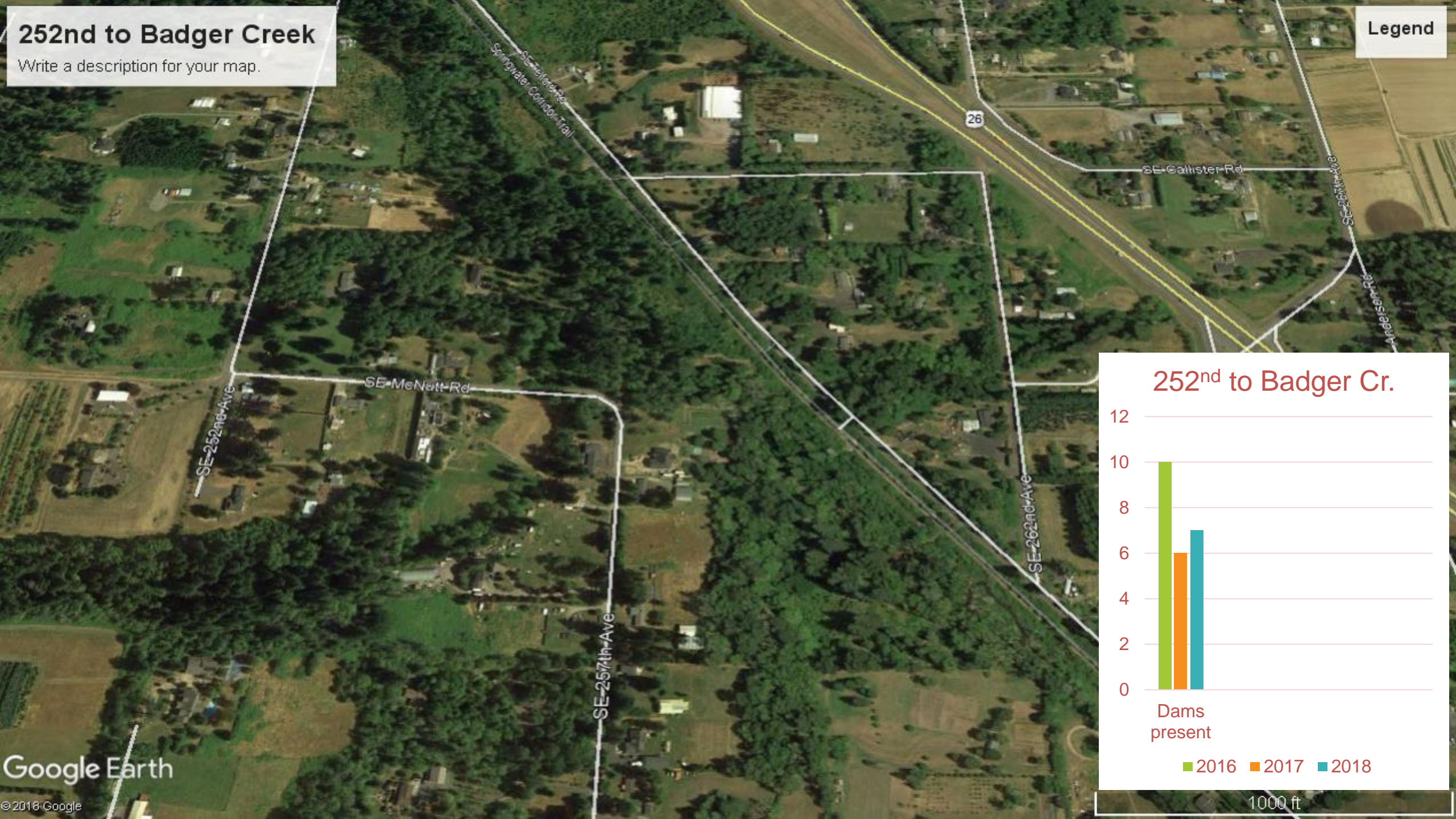




# 252nd to Badger Creek

Write a description for your map.

Legend





# Riparian Variability and Channelization



Quality habitat



Human Presence



# Channelized Reaches vs. Less Channelized/Restored Reaches

- 3 of the 10 reaches are highly channelized- collectively surveyors found very little activity and 2 dams over 3 years.
- Of the 7 less channelized reaches, 3 had consistently high levels of beaver activity.
- Only 1 of the less channelized reaches showed little activity; it's a newly restored site (2014) that had it's first beaver dam this year!



# Risk Factors to Consider

- Vulnerability of riparian restoration?
- Vulnerability of adjacent land and/or roads to flooding?
- Vulnerability to the beavers themselves?
- Connectivity of intact and/or protected habitats?





# Beavers and Restoration Planning?

- Beaver-based habitat objectives?
- Planning for beavers “help” with restoration?
- Beaver-friendly, sustainable reforestation?
- Contingency planning and beavers?
- There goes the neighborhood?

