

2011 Annual Report

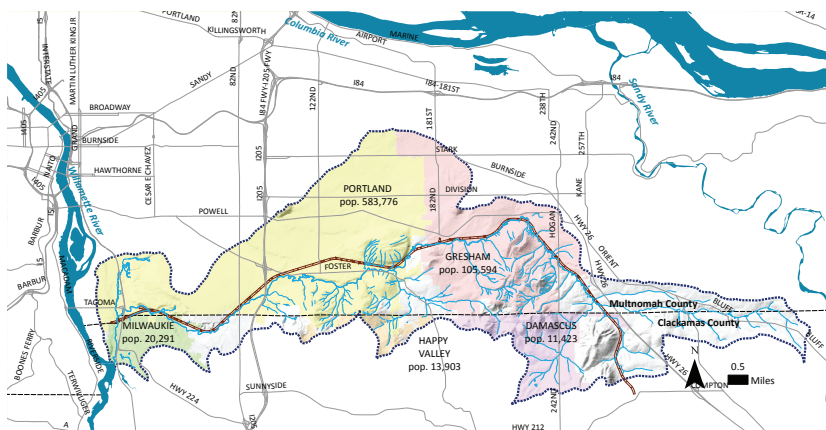


Johnson Creek
Watershed Council



Johnson Creek Watershed

Johnson Creek flows 26 miles from its headwaters near the Sandy River to its confluence with the Willamette River, passing through four cities (Gresham, Happy Valley, Portland, and Milwaukie) and two counties (Clackamas and Multnomah). A ribbon of green and blue, Johnson Creek is one of the resources that makes the east Portland-metro area a wonderful place to live. The goal of the Johnson Creek Watershed Council is to protect this valuable resource for the fish, wildlife and people who call the watershed “home.”



2011 Board Members, from left: David Scharfenberg, Perry Rikli, Celeste Mazzacano, Torrey Lindbo (in wheelbarrow), Michael Jones, Tim Cooper, Russ Mantifel, Jason Howard

2011 JCWC Board Members

Jason Howard, Chair and Land Use Committee Chair,
Project Hydrogeologist, EnviroLogic Resources, Inc.
Russ Mantifel, Vice Chair, Policy Specialist, Bonneville Power Admin.
Tim Cooper, Treasurer, IT Development Manager, Criterion Brock
Torrey Lindbo, Secretary, Water Quality Assessment Specialist,
City of Gresham
Jennifer Antak, Environmental Assessment Specialist, City of Portland
Rick Attanasio, Principal Project Manager, CH2M Hill
Eli Callison, Environmental Program Specialist, City of Portland
Denisse Fisher, PhD candidate, Portland State University
JoAnn Herrigel, Community Services Director, City of Milwaukie
Tracy Hokanson, Distribution Engineer and Supervisor, PGE
Roy Iwai, Water Resources Specialist, Multnomah Co. Road Services
Dr. Michael Jones, Instructor of Biology and Natural Resources,
Mt. Hood Community College
Dr. Celeste Mazzacano, Staff Scientist /Aquatic Program Director,
Xerces Society for Invertebrate Conservation
John Nagy, Clackamas County Water Environment Services,
Clackamas County
Perry Rikli, Instructor, Mt. Hood Community College
Bob Sanders, Attorney, Wood Tatum
David Scharfenberg, Sixth Grade Teacher, Pleasant Valley School
Candace Stoughton, Low-Impact Development Specialist,
East Multnomah Soil and Water Conservation District

Get involved.
Help us achieve our Strategic Plan.
See the calendar for fun, educational and fundraising events

- Visit our new website at www.jcwc.org
- Sign up to receive our monthly E-bulletin or newsletter
- Write an article for the newsletter
- Participate in the Johnson Creek Classic Golf Tournament to raise funds for JCWC
- Join a committee: Land Use, Events, or Outreach Task Force
- Come to Johnson Creek Days: Discovery Carnival, Paint Out, Bike Bonanza, or Art Show
- Participate as a restoration volunteer. Come to the 15th Annual Watershed Wide Event March 2, 2013
- Contribute and become a Friend of Johnson Creek

How to reach Johnson Creek Watershed Council

1900 SE Milport Road, Suite B
Milwaukie, OR 97222
503-652-7477
www.jcwc.org
info@jcwc.org

Photo credits:

Cover photo of the completed confluence by Inter-fluv, Inc.,
Bruce MacGregor/www.brucemacgregorphotography.com,
Kyung Lee/Spinwave Photography, Roy Iwai, Noah Jenkins,
Robin Jenkinson, and Marty Urman

JCWC Advisory Circle

Bill Bakke, President, Native Fish Society
Earl Blumenauer, U.S. House of Representatives
Diane Boly, Partner, Boly Welch
Carlotta Collette, Metro Council, District 2
David James Duncan, Author
Robert Gootee, President and CEO, ODS Companies
Mike Houck, Executive Director, Urban Greenspaces Institute
Teresa Huntsinger, Clean and Healthy Rivers Program Director,
Oregon Environmental Council
Steve Johnson, Professor, Portland State University
Gary Klein, Underwriter, Wells Fargo
Walt Mintkeski, Environmental Engineer
Jonathan Nicholas, Vice President, ODS Companies
Gary Rydout, Education Consultant
John Wrenn, Senior Vice-President, UBS



JCWC Staff: Marty Urman, Matt Clark, Amy Lodholz, Noah Jenkins, Erin O'Shaughnessy, Robin Jenkinson (in wheelbarrow)

JCWC Staff

Matt Clark, Executive Director
Noah Jenkins, Education and Research Associate
Robin Jenkinson, Restoration Coordinator
Amy Lodholz, Volunteer and Outreach Coordinator
Erin O'Shaughnessy, Office Coordinator
Marty Urman, Outreach Associate



The mission of the
Johnson Creek Watershed Council
is to promote restoration and stewardship
of a healthy Johnson Creek Watershed
through sound science and
community engagement.

Plans to Action

JCWC Five-year Strategic Plan at a glance

- Continue restoration projects that improve ecological function and connect habitat
- Develop a collaborative, scientific framework that guides actions to achieve a healthy watershed
- Communicate the ecological, economic, and recreational value of the Johnson Creek Watershed
- Become a well-known and trusted presence in the upper watershed
- Integrate environmental education into all JCWC programs, particularly our work with landowners
- Revitalize JCWC office as a community hub
- Increase JCWC's capacity and influence in proactive watershed land use policy
- Increase the organization's long-term financial stability and capacity to partner with stakeholders

If you would like to read the Strategic Plan in its entirety, contact Matt Clark (matt@jcwc.org).

JCWC 2012 Calendar of Events

Check our website for details. Register for all events at www.jcwc.org

Freshwater Mussel Survey
Saturday, June 2
Tideman Johnson Park

Tree ID Stroll at Mitchell Creek
Sunday, June 10
Led by Chris Runyard with
Friends of Trees

Freshwater Mussel Survey
Saturday, June 16
Hogan Creek in Gresham

**Mussel Survey / Encuesta de
Mejillones (Evento bilingue)**
Saturday, July 14
Brookside Wetland

Freshwater Mussel Survey
Sunday, July 15
Leach Botanical Garden

Paint Out Workshop
Saturday, July 7
Johnson Creek Park

Photo Out Workshop
Saturday, July 21
Leach Botanical Garden

**Johnson Creek
Charity Golf Classic**
Monday, July 30
Persimmon Country Club

Paint Out Workshop
Saturday, August 4
Gresham Main City Park

**Johnson Creek Clean-up & BBQ
Limpieza de Johnson Creek &
Barbacoa (Evento bilingue)**
Saturday, August 25, Mill Park

Johnson Creek Art Show
Friday, September 7-October 12
Reed College Vollum Lounge

Weed Walk
Saturday, September 8
SE Jenne Rd. and Circle Ave.

Johnson Creek Fun Run
Wednesday, September 12
Foot Traffic in Sellwood

**Bicycle Bonanza
with Cartlandia**
Saturday, September 15
Meet at JCWC headquarters

Children's Discovery Carnival
Saturday, September 22
Lents Park

Worthy to Get Dirty
Volunteer Event with SOLVE
Saturday, September 29

Salmon Surveys Begin
October 1- December
Volunteers needed

Volunteer Appreciation Dinner
Saturday, December 1
Location TBD

Message from the Chair

A Mission Restated



In 2011, Johnson Creek Watershed Council celebrated its 15th anniversary of funding dedicated to providing leadership and fostering a stewardship ethic in the watershed. We are proud of this successful history centered on community involvement,

education and volunteerism in the preservation and restoration of Johnson Creek. As we look to the future, we are committed to growing our financial and human resources to increase our stability and capacity so JCWC will prosper at its mission for at least another 15 years with increasing numbers of native fish, wildlife, and inter-connected habitat.

In 2011, the Johnson Creek-Willamette River Confluence Project, the largest in-stream project led by the Council to date, was constructed under budget and highlights the creative work that can be done with engaged partners and donors. Conceptual designs for the Tacoma Street/Johnson Creek MAX Station fish habitat enhancements (along the future Milwaukie Light Rail line) were also developed, thanks to the Council-led Creek Committee and grant funding from East Multnomah SWCD. Feedback from board members, volunteers, and many of our internal and external stakeholders resulted in a new Strategic Plan.

With the release of the Strategic Plan, a number of key strategies will be emphasized over the next five years. With input from its agency, academic, and community partners, JCWC will lead the development of a collaborative scientific framework for a healthy Johnson Creek Watershed. By communicating ecological, economic and recreational value, Johnson Creek will be recognized for its important contributions to quality of life, and as a center for nature-based recreation, environmental education, and research.

In 2012, having just completed a Land Acquisition Strategy, a group of non-profits and jurisdictions called the Johnson Creek Conservation Partnership will begin fundraising to support acquisition from willing sellers of high ecological value lands in the watershed. JCWC will also be fundraising to establish a Johnson Creek Endowment to ensure the long-term success of our mission.

Jason C. Howard, Board Chair, JCWC



From the Director Mission in Progress



In 2011, JCWC completed a five-year strategic plan. We had come of age since completing our last strategic plan in 2006. We needed a new plan to reflect our maturation as an organization—programmatically, operationally, and financially—to guide JCWC to

new levels of achievement and positive impact on the health of Johnson Creek Watershed.

In some cases, our strategic plan moves us in new directions. For example, a key strategy is to expand JCWC's focus eastward, to become a well-known and trusted partner in the upper watershed where historically we've had less of a presence than in the urban lower watershed. In other ways, our new plan crystallizes existing strategies and reaffirms directions we were already heading.

Continuing to implement high priority restoration projects.

Last year, we completed our largest restoration project to date, a salmon habitat project at the Johnson Creek–Willamette River confluence. Fresh from that success and with our Restoration Project Census as a guide, we will continue to strategically select and implement restoration projects that improve ecological function and connect habitat.

Keeping science at the forefront of our work.

2011 was a banner year for new scientific information about the Johnson Creek Watershed, much of it collected by citizen scientists. In the summer, JCWC mobilized dozens of volunteers to conduct freshwater mussel surveys, and in the late fall, dozens more to search the creek for spawning salmon. JCWC also continued to participate on the Johnson Creek Inter-Jurisdictional Committee (the IJC), which has forged a successful model for collaborative research and monitoring. With the IJC's strong support, the Council is poised for one of our main strategic goals: to lead a collaborative, peer-reviewed process to develop a comprehensive and realistic scientific framework for Johnson Creek Watershed that guides the actions needed to achieve a healthy watershed.

Communicating Johnson Creek's value.

Johnson Creek received a wealth of positive media coverage in 2011. From local to international news coverage, we are telling the story of Johnson Creek's recovery far and wide. It reflects a sea change in the

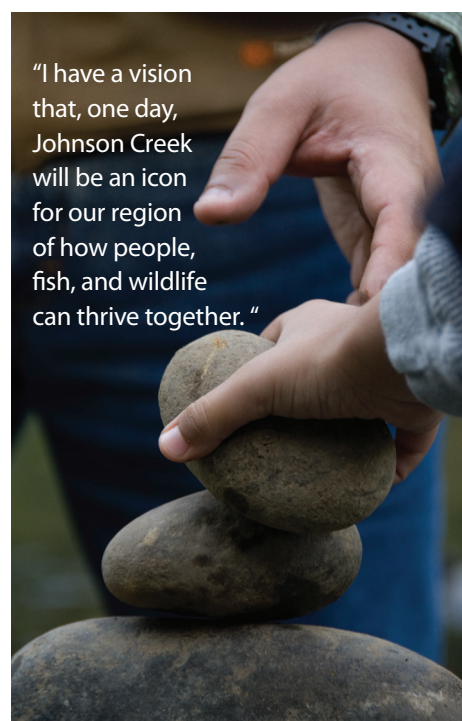
public's perception of Johnson Creek: from a degraded eyesore to a valuable community amenity. Wild salmon are spawning again in the heart of Oregon's largest city, and the sense of excitement and hope are palpable. The JCWC is in a strong position to continue to communicate the ecological, economic, and recreational value of the creek to a broader, more diverse range of watershed residents.

Strategic planning isn't easy. It reflects JCWC's commitment to step up our game. The time is right to do so. After decades of mistreatment and neglect, Johnson Creek is coming back to life.

I have a vision that, one day, Johnson Creek will be an icon for our region of how people, fish, and wildlife can thrive together. It's not really my vision, or at least not mine alone; it belongs to the thousands of people who dedicate their skills, their time, and their financial resources to Johnson Creek and its watershed. Working together, this vision will come to pass.

Matt Clark

Matt Clark, Executive Director, JCWC



Sound Science Conservation Registry

New in 2011, the Johnson Creek "Restoration Project Census" website (jcwc.conservationregistry.org) has become the go-to source for information about restoration projects and activities within the watershed. The website features a watershed map linked to a searchable database of 120 restoration project descriptions. To populate the database, the Council interviewed jurisdictional and non-profit partners, then conducted site visits to ground-truth project descriptions and assess site maintenance needs. The compilation and organization of this project information is the first step in updating the 2002 *Johnson Creek Watershed Action Plan* to ensure JCWC's work remains focused on restoration priorities with the highest potential impact.

Johnson Creek Interjurisdictional Committee (IJC)

Across the watershed, often in response to regulation, jurisdictions and other entities monitor and report on water quality and watershed health. A variety of parameters are measured and at different spatial scales. With its focus on collaborative monitoring and integrated research, the Johnson Creek IJC is helping to paint the bigger picture, moving us from treating isolated symptoms to understanding and improving ecological health at the watershed-scale. To facilitate data sharing, the IJC created a Google site where datasets, maps, and reports are located.

Here are more of the latest IJC achievements:

For three summers running, the IJC has sampled benthic macroinvertebrates (identified to the species level) at 20 random sites throughout the watershed. What we've found are "islands" of diverse species-rich macroinvertebrate communities in some tributary headwaters. These results help focus management on expanding habitat outward from these remnant oases.

The IJC collaboratively deploys summertime temperature loggers, with the JCWC filling measurement gaps. Each winter, we lump our data for analysis. Together, we've identified a number of cooler water tributaries and spring-cooled areas that have become targets for conservation and enhancement.

In 2011, Multnomah County and partners surveyed headwater reaches in and upstream of Gresham, greatly expanding our knowledge about where threatened coho and other native fish species are present, particularly highlighting the importance of small unnamed tributaries for native fish production.

Since 1999, the jurisdictions have helped fund three USGS streamflow, sediment, and temperature gages. This data is available in real-time online at the USGS website (or.water.usgs.gov/johnsoncreek/).



Freshwater Mussel Surveys

Partnering with the Xerces Society in 2011, JCWC staff and volunteers conducted freshwater mussel surveys throughout the watershed, finding dense beds of native Western Pearlshell Mussels in Johnson Creek from SE 156th to the very headwaters. Western Pearlshells depend on native trout; to survive and disperse as young glochidia, they attach to a fish's gills. Many of the mussels found in Johnson Creek are likely over 80 years old, but there are also young mussels, indicating that, thanks in part to our native fish, mussel populations are reproducing successfully. Invasive Asian clams are also present in very low numbers in mainstem Johnson Creek and are abundant throughout Crystal Springs, a spring-fed tributary to Johnson Creek.

Volunteer Coho Spawning Surveys

Summertime fish surveys have documented the extent of juvenile coho in the watershed, but we know very little about how many adult coho return to spawn in Johnson Creek each fall. During the fall of 2011, 35 JCWC volunteers received training from the Oregon Department of Fish and Wildlife to conduct coho spawning surveys. In December, two of our volunteers found an adult coho carcass in Gresham, marking the first officially documented coho by an ODFW Spawning Survey within Johnson Creek. We plan to continue this program in fall 2012.

Community Engagement

Volunteers Increase Support

2011 marked another successful year for JCWC's volunteer program with more than 1,100 volunteers contributing 5,500 hours at 40 different volunteer events. As our program matures, we are adding more and diverse ways for volunteers to serve the Council and Johnson Creek. As one example, the volunteer-led Events Committee planned and produced our second annual Johnson Creek Days events in September. One of the most popular events, the Children's Discovery Carnival, was staffed entirely by volunteers. The salmon surveys (see above) are another example of how volunteers are extending our organizational capacity, blending our strategic goals of engaging the community and advancing sound science.

The depth of volunteer commitment also has grown. In 2011, four volunteers earned Presidential Service Awards for volunteering 100 hours or more during the calendar year on behalf of the Council. We are grateful to Nicole Alexander, Shawn Brown, Torrey Lindbo, and Russ Mantifel for their service.

Education

Youth Engaged

The program enjoyed another successful year, reaching 200 students at seven schools. These students made several visits to sites in the watershed to combine academic work, such as water quality monitoring and freshwater mussel surveys, with restoration. Students removed more than 30 cubic yards of invasive plant material, planted 2,800 native shrubs and trees, and collected data that contributed to both the Johnson Creek-Willamette Confluence project and the mussel monitoring effort.

Backyard Habitat

JCWC partnered with the Portland Audubon Society and Columbia Land Trust to bring their Backyard Habitat Certification Program to the Johnson Creek watershed in 2011. During this first year, 14 landowners received initial site visits, which provided them with technical advice and resources to help them remove invasive plant species, select and install native plants, and improve wildlife stewardship and storm-water management on their property. One landowner achieved certification; others are well on their way.

Land Use

Council Offers Feedback

The JCWC Land Use Committee participated in several large planning processes in 2011. In May, Damascus residents voted against their City Council's adoption of the Damascus Comprehensive Plan and Maps. JCWC continues to track the status of the Plan, and supports a balance between accommodating future growth and protecting Damascus' rural character, clean water, and wildlife. JCWC also provided feedback to Clackamas County, Damascus, Gresham and Happy Valley on a proposed future alignment of 172nd Avenue north of Sunnyside to determine how it will connect to 190th Drive in the Pleasant Valley/Kelley Creek area of Gresham.

The Land Use Committee supported Gresham's adoption of an Urban Forestry Management Plan for a comprehensive, sustainable, and integrated approach to tree management on public and private property. The committee supported Milwaukie's adoption of Natural Resources Amendments. The code amendments are intended to allow for habitat-friendly development and to protect and restore continuous stream and upland habitat corridors.

Restoration

Mill Park

Clackamas County Water Environment Services (WES) CCSD#1 hired JCWC to install a total of 475 shrubs and 95 trees as mitigation for sewer work conducted near Mill Park, in Milwaukie, Oregon. With the help of volunteers, and North Clackamas Parks and Recreation Department, a 20-foot riparian forest buffer was established, converting existing lawn to densely planted native trees and shrubs. To do the planting and build community awareness of the value of healthy riparian forests, JCWC coordinated two volunteer events with the Overland Park Coalition and the Portland Waldorf School.

Johnson Creek-Willamette River Confluence Salmon Habitat Enhancement Project

In September, 2011, 150 logs and 200 boulders were used to enhance habitat for threatened salmon runs in Johnson Creek, where it flows into the Willamette River in Milwaukie. Engineered log jams were constructed to provide cover and shelter for fish, and a fish passage barrier was removed by backwatering an exposed sewer pipe with a constructed riffle, so fish can move freely up Johnson Creek all year round. Additional project elements include six acres of riparian forest restoration, which began in winter 2012, and an interpretive overlook and trail on the southern bluff is scheduled to be constructed in June, 2012 through funding from a Metro grant, awarded to JCWC and the City of Milwaukie. Project effectiveness monitoring of wood recruitment, macroinvertebrate communities, and vegetation will be conducted in August, 2012.

Invasive weed control

Council staff and crews treated over 17.5 acres of garlic mustard in 2011; we are seeing a significant reduction in percent cover for this species. We also treated or coordinated treatment of all known false brome patches in the watershed, and did follow-up treatment on 460 knotweed stems.

CreekCare

Council staff coordinated contract crews to control invasive species such as blackberry to prepare seven properties participating in the CreekCare program for planting in 2013. This program offers free streamside weed control and native revegetation work to landowners in the upper Johnson Creek watershed through funding from OWEB and in partnership with the Clackamas Soil and Water Conservation District. Current work covers nearly five acres, and will improve a half-mile of critical streamside habitat.



Thanks to our many supporters from July 1, 2010-December 31, 2011

You embrace and promote our mission and programs

Individual Donors

Cliff & Nicole Alexander
Katya Amato
Barbara Amen
Roger Amey
Margaret Anderson
Michael Anderson
Anonymous
Karl Arruda
David Linn Aschenbrenner
Chelsea Athing
Rick Attanasio
Stephen R. Bachhuber
Jean Baker
Tony Barbera
Darius Barnes
Judy and Tom Barnes
Kathryn Bates
Lisa Batey
Quintin Bauer
Jerome Beck
Steve Bennett
Steven Berliner
Jon Biemer and Willow
Sage Dixon
Martha Jane Bixby-Mealy
Ruth Blackburn
Adriane and Sam Blackman
Chris Blattner
Andrew and Diane Bogenhagen
Diane Boly in memory of
Harriet Wilson
Nancy and Paul Bragdon
Julia Braun
Daniela Brod
Wendy Buchanan
Patti Bucher
Matt Burke and Jill Fuglister
Kim Burley
Michelle Bussard
Gracie Campbell
Joseph H. Campbell
Lynne Campbell
Jennifer Card
Billie and Donald Carlson
Patty and Ron Cascisa
Elmer C. Case
Anthony Cast
Andrea and Joseph Castillo
Julie Chapman
Nancy Chapman
Catalina S. Choi
Tom Christ
Stephanie Cissna
Brinton Clark
Mary Clark and Craig Schaffer
Donna and Robin Cody
Ralph O. Coleman
Marianne Colgrove
Carlotta Collette
Connie Colter
Patricia and Bruce Conrad
Jim Cooke
Leesa and Tim Cooper
Lisa Cosgrove
Kathy Cox
John Davis
Lee Dayfield
Liesl and Casey Deck
Rebecca and Dan Dehen
Lola Dennis
John Diaz
Tamra and Richard Dickinson
Frank and Jeanie DiGregorio

Jane Donegan and Karen Kruse
Kevin J. Downing
Jim Dryden
Kevin Duff
Nannette and Thomas Edwards
Mary Anne Ellison
Kaethe Fachtmann-Flack
Joyce Felton
Sarah Ferguson
Scott A. Fernandez
Nancy J. Finch
Denisse Fisher
Robin Fladebo
Ernestine and David Francisco
Tyler Franzen
Amanda and Steven Fritz
Bonnie Garlan
Nick Gianopoulos
Kathy Goeddel
Anna Goldrich and Jim Middaugh
Sylvia Gray
Dave Green
Terry M. and David Griffiths
Eric Griswold
Karen and Thomas Gritzka
Lisa Gunion-Rinker and Matt Rinker
Renee Hackenmiller-Paradis
Mary Kay and Tom Hansen
Justin Hanseth
Nancy L. Harris
Henry Haselton
Trent Hatfield
Bobby Hayden
Gerri Hayes
Marilyn Hays
Vivian and Pat Healy
JoAnn Herrigel and George Tylinski
Molly Herzig
Tara and Jason Hieggelke
Deborah and Karl Hofmann
Diane and Stanley Howard
Jason C. Howard
Charles Hudson
Christina Huntsinger
Marlene Huntsinger
Carly and Nick Itami
Craig Iverson
Noah Jenkins
Nancy Jesuale
Gordon Joachim
Betty Johnson
Janet Johnson
Marie Johnson
Steve Johnson
Brad Jonasson
Dr. Michael Jones
Martha Jones
Molly Jones
Roberta Jortner and
Karl Knute Lee
Mary Anne Joyce
Al Jubitz
Joy Keen and Sylvan Thompson
Jan and Jon Kellog
Barbara and Scott Kelly
Brett Kelver
Eve and Michael Kenyon
Ed Kerns
Andrew Kerr
Jess Kimball
Mary K. King
Sharon and Gary E. Klein

Joyce and Arden Knepper
Steve Knepper
Matt Kooser
Erin S. Kourtes and Daniel Bartosz
Nancy Kraemer and David Roth
Ann Krier and Les Bush
Jim Labbe
Leslie and Randy Labbe
Ted Labbe
Ed Labinowicz
Dan Laffitte
Logan Lauvray
Christina Lawton
Andrea Leal
Gary Leaverton
Charlotte Lehan
Ann Lemcke and David Kibby
Moshe D. Lenske
Don Liedel
Angela and Torrey Lindbo
Hsiao-Teh Lo and Douglas Fix
Jeff Locke
Amy Lodholz
Gail Lodholz
Susan and Dennis Lodholz
Kevin Loftus
Sarah Jane Lott
Kaitlin Lovell
Bruce MacGregor
Colleen Magleby
Russ Mantifell
Sionainn Marcoux
Deb and Dean Marriott
Cindy Martin
Marilyn Hays
Tim Martin
Annette Mattson
Celeste Mazzacano and
Denise Searles
Nancy and John McCormick
Cory McAlister
Sara McAlister
Bill McCandless
Melanie McCandless and
Aaron Waldorf
Soma McCandless
Bill R. McCracken
Marske McEntyre
Mark McGirr
Marla McNary and Robert Bailey
Adam Menendez
Yolanda Meno
Bayard Mentrurn
John Mercer
Jennifer Miller
Alison Moore
Nadine Morris
Christina and John Mullooly
Richard Myers
Joyce and John Nagy
Cynthia Nawalinski
Alice and Navin Nayak
Marianne Nelson
Priscilla Nelson
Noelwah R. Netusil
Robert Neyer
Dan Olberding
Kitty O'Meara
Bev and Milo Ormseth
Carol Otis and Roger Goldingay
Dorothy and Jerry Palmer
Kathy Parker
Patricia Pearson

Don H. Pedersen
Marilyn Pitts
David Porter
Judith E. Potts
Elaine and David Prause
Colin Price
Joann Pullen and L.E. Wynne
Charles Redding
Beverly and Bob Reeves
Mary Renfrow
Jeanne Richardson
Perry Rikli
Sean Rivers
Janet Roberts and Ed Clark
Linda M. Robinson
Debra Rose-Weiss and David
Allen Weiss
Gail Lee Roudebush
Julie and Erik Rudin
Sue Ruonala
Ellen Ryker
Bob and Gail Sanders
Abby Sarmac and Matt Clark
Catherine Schaeffer
David Scharfenberg
Mary Ann and Robert Schmidt
John Schuberg
Jill Schwie and David Jursik
Linda Setchfield
Gail Shaloum
Dr. Timothy Shannon
Traci and Tim Shields
Rosemary K. Shiolas
Judy and Bob Shiprack
Louise Shorr
Sandy Shotwell and Dan Pence
Maggie Skenderian
Lee Spiker
Paul Stasi
Adam Stonewall
Martha and George Taylor
Carolyn Tomei and Gary Michael
Ann Torre
Jeff Tracy
Jill Tucker
James Unterspan
Marty Urman
Rita and Gerald Van Deene
Jane Van Dyke
Lynn Vanderkamp
Marcia Vanderschaaf
Deanne Vegge
Linda and Larry Veltman, MD
Alice and Dick Vetter
Ann Villarqui
Pamela Vohnson
Mary Wahl
Nancy Walsh
Dr. Erwin Weichel
Geri Weiner
Manuela Whelan
Dilafruz and James Williams
John (Jay) Wilson
Susan and Bart Wilson
Kelsey Wirtzfeld and Steve Smith
Suzie Wolfer and Thom Corcoran
in memory of LeNore Wolfer
Dolores and Ernest Wood
Owen Wozniak
Duncan Wyse
Vanessa Yazicigil
Melissa Yeary
Beth and Todd Zilbert

Business, Foundation & Government Donors

Ace Hardware
Albertsons
ArtHeads Custom Framing
Art Media
Atiyeh Bros.
Bob's Red Mill
Brown and Caldwell
Cargill Bakery
City of Gresham
City of Portland
City of Milwaukie
Clackamas County Soil and Water
Conservation District
Clackamas County Water
Environment Services
Columbia Sportswear
Dave's Killer Bread
Earthshare of Oregon
East Multnomah Soil and Water
Conservation District
FishAmerica Foundation / NOAA
Fred Meyer
Gisi Marketing Group
Great Harvest Bread Co.
Hopworks Urban Brewery
Jameson Partners DBA Freeway Lands II
Jubitz Family Foundation
Kerr Pacific Corp.
Marsee Baking
Metro Nature In Neighborhoods
Microsoft
Mintkeski Family Fund of the Oregon
Community Foundation
Meyer Memorial Trust
Multnomah County Road Services
Network of Oregon Watershed Councils
New Seasons Market
Noah's Bagels
Northwest Flyfishing Outfitters
ODS Companies
Oregon Department of Agriculture
Oregon Watershed Enhancement Board
Oregon Worsted Company
PCC Structurals
Portland General Electric
PGE Salmon Fund confluence
QFC
RBC Blue Water
REI
Recology
River Network/ Miller-Coors
Schondecken Coffee Roasters
Sellwood Dog Supply
Spirit Mountain Community Fund
Starbucks
SunGard Team PDX
The ODS Companies
The Nature Conservancy
The Standard Insurance
Tidee Didee Diaper Service and
Natural Baby Boutique
Trader Joes
Umpqua Bank
Vigil-Agrimis, Inc.
West Multnomah Soil and Water
Conservation District
WHH Foundation
Widmer Brewing
Willamette Sailing Club

The Council has made every effort to spell donors' names correctly. If there is a mistake, please contact us so we can correct it. Thank you.



Financial Position

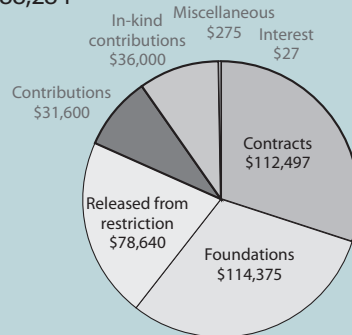
Our Partners

Alpha High School
 Americorps National Civilian Community Corps (NCCC)
 Ardenwald - Johnson Creek Neighborhood Association
 Bruce MacGregor Photography
 City of Damascus
 City of Gresham
 City of Milwaukie
 City of Portland: Bureau of Environmental Services
 and Portland Parks and Recreation
 Clackamas County
 Clackamas County Water Environment Services
 Clackamas Web Academy
 Community Energy Project
 Crystal Springs Apartments
 Crystal Springs Partnership
 Cub Scouts Pack 740
 DePave
 Downtown Historic Gresham Kiwanis
 East Multnomah Soil and Water Conservation District
 Ecology and Environment
 Fish America/NOAA
 Friends of Crystal Springs
 Friends of Tideman Johnson
 Friends of Trees
 Friends of Tsuru Island
 Green Lents
 Gresham Rotary
 Hawthorne Hostel
 Hawthorne Ridge Neighborhood Association
 Jameson Partners DBA Freeway Lands II
 Leach Botanical Garden
 Lents Springwater Corridor Habitat Restoration Project
 Lovena Farm
 Metro Nature in Neighborhoods
 Mount Hood Community College
 Multnomah County
 Multnomah Youth Cooperative (MYC)
 New Urban High School
 North Clackamas Parks and Recreation
 ODS Companies
 OLCC
 Oregon Department of Fish and Wildlife
 Oregon Environmental Council
 Oregon Hunters Association
 Overland Park Coalition
 Pacificmark Construction
 Parklane Church
 PCC Structural
 PGE and PGE Salmon Fund
 Pleasant Valley Neighborhood Assoc.
 Portland Audubon Society
 Portland Waldorf School
 Powellhurst-Gilbert Neighborhood Association
 Reed College
 REI
 Salvation Army's Camp Kuratli
 Sellwood Fire Dept. Station 20
 Sellwood-Moreland Improvement League (SMILE)
 SOLVE
 Spinwave Photography
 Springdale Job Corps
 Starbucks
 The Nature Conservancy
 TriMet
 Xerces Society

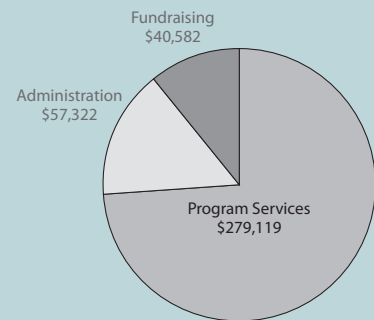
These people have included JCWC in their estate planning

Walt Mintkeski
 Marty Urman

Revenues \$388,284



Expenses \$377,023



Statement of Financial Position

	2011	2010
Assets		
Cash	30,153	30,575
Prepaid expenses	642	637
Contracts receivable	74,295	167,991
Furniture and equipment	2,234	4,086
<i>net of accumulated depreciation of \$18,962 and \$17,091 respectively</i>		
Total assets	\$107,324	\$203,289
Liabilities and net assets		
Accounts payable	11,080	131,289
Accrued payroll and related taxes	5,372	5,372
Accrued vacation	4,034	4,034
Deferred revenue	12,983	--
Total liabilities	\$ 33,469	\$ 140,695
Net asset		
Unrestricted	25,980	29,579
Temporarily restricted	47,875	33,015
Total net assets	\$ 73,855	\$ 62,594
Total liabilities and net assets	\$107,324	\$203,289

Statement of Activities

	Unrestricted	Temporarily Restricted	Total 2011	Total 2010
Revenues/support				
Contract revenue	112,497	--	112,487	289,736
Foundations	114,375	93,500	207,875	108,209
Contributions	31,610	--	31,610	20,456
In-kind contributions	36,000	--	36,000	36,000
Interest income	27	--	27	17
Miscellaneous	275	--	275	3,280
	294,784	93,500	388,284	457,698
Net assets released from restriction	78,640	(78,640)	--	--
Total revenues	\$373,424	\$ 14,860	\$388,284	\$457,698
Expenses				
Program services	279,119	--	279,119	367,384
Supporting services				
Administration	57,322	--	57,322	44,176
Fundraising	40,582	--	40,582	29,712
Total expenses	\$377,023	--	\$377,023	\$441,272
Change in net assets	(3,599)	14,860	11,261	16,426
Net assets 7/1/10	29,579	33,015	62,594	46,168
Net assets 6/30/11	\$ 25,980	\$ 47,875	\$ 73,855	\$ 62,594

2011 Riffle Awards

Johnson Creek Watershed Council is proud to present annual Riffle Awards to honor groups and individuals who support our mission to promote restoration and stewardship of a healthy Johnson Creek Watershed. Awards are presented at the Annual Meeting held in May.



Ernie Francisco Award for Individuals: Russ Stoll. As a volunteer member of the Creek Committee, Russ has worked tirelessly on a project that will incorporate salmon habitat and an interpretive boardwalk into the Tacoma Street MAX station, scheduled to open in 2015, just south of Johnson Creek. Russ is also an active restoration volunteer, always willing to help Johnson Creek.

Community Group: Overland Park Coalition. For four years and counting, Overland Park Coalition has played a central role in planning and producing the annual Johnson Creek Clean-up, which occurs in August. Every year since its inception, this event has grown in stature and geographic extent. This year, more than one hundred volunteers, including United States Senator, Jeff Merkley, cleaned up in-stream garbage from the mouth of Johnson Creek to I-205.

Youth/School: Mt. Hood Community College SEED Program. Each year, forty Latin American and Caribbean students participate in the two-year SEED (Scholarships for Education and Economic Development) program at MHCC, learning conservation skills that they will take back to their home countries. Since hosting our first SEED intern, Lucrecia Garcia in 2009, JCWC has benefited tremendously from these students' energy and enthusiasm for learning. This year, more than 30 SEED students anchored the Gresham Woods site at Watershed Wide Event.

Business: PGE. Reflective of PGE's culture of service, over the last ten years, four PGE employees have contributed their time, skills, and enthusiasm to JCWC as members of our board of directors. In 2011, PGE donated hundreds of logs and boulders, worth more than \$20,000, to our salmon habitat project at the Johnson Creek/ Willamette River confluence. Our biggest restoration project to date, we could not have completed it successfully without dedicated partners like PGE.

Public Entity: Multnomah County Road Services. In 2011 and 2012, Multnomah County Road Services staff led native fish surveys in upper Johnson Creek Watershed, collecting information that will be invaluable for future restoration and land use decisions as well as for educating natural resource managers and land owners, particularly about the importance of smaller and unnamed tributaries for native fish production in Johnson Creek Watershed. Road Services also stored donated logs for the Confluence Project, enabling us to reduce our project budget.

I want to become a Friend of Johnson Creek

Name* _____
Address* _____
City/State/Zip* _____
Day phone _____
Evening phone _____
Email _____

Please sign me up to receive your ☐ Monthly e-bulletin ☐ Quarterly newsletter

Enclosed is my tax deductible contribution

☐ \$35 ☐ \$75 ☐ \$150 ☐ \$250 ☐ \$500 ☐ \$1000

☐ \$ _____

☐ Monthly recurring donation \$ _____

☐ My check is enclosed ☐ Please charge my credit card

Card # _____

Expiration date _____

3 digit CVV2 code _____

Signature _____

☐ My employer will match my gift

*We do not share this information/address required if paying by credit card

I want to Volunteer

Volunteers contribute thousands of hours to projects that help us create a healthier Johnson Creek. Without your involvement, our work would not be possible.

- ☐ Restoration Projects
- ☐ Public Awareness/Outreach
- ☐ Land Use/Advocacy
- ☐ Events/Fundraising
- ☐ Publications
- ☐ Education
- ☐ Other _____

Return to:



Johnson Creek
Watershed Council

1900 SE Milport Road, Suite B
Milwaukie, OR 97222
503-652-7477
www.jcwc.org