

# Salmon, Steelhead and Lamprey Monitoring In the Johnson Creek Watershed

**Ryan Jacobsen**

*Oregon Adult Salmonid Inventory and Sampling Project*

*Oregon Department of Fish and Wildlife*

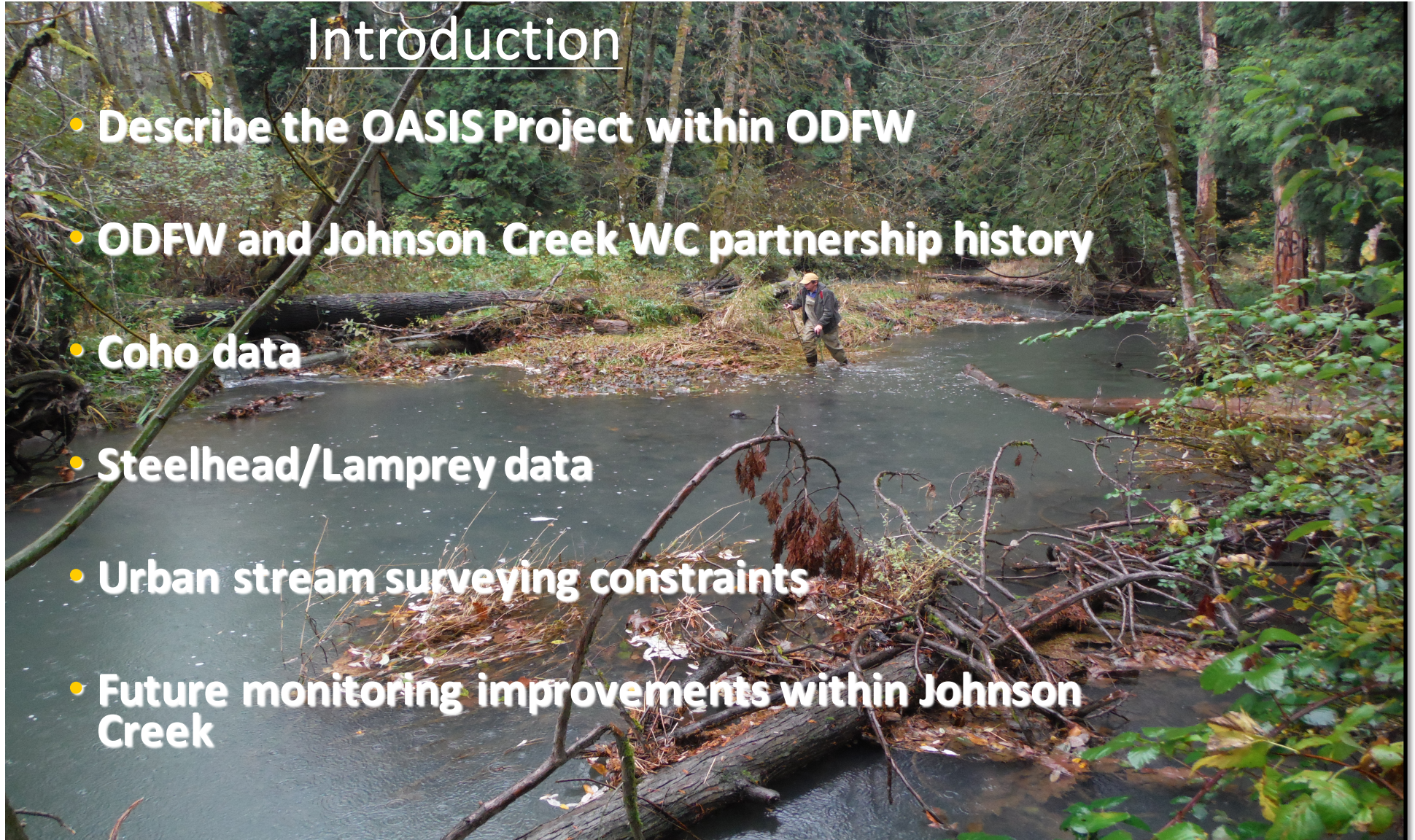
*28655 Hwy 34*

*Corvallis, Oregon 97333*



## Introduction

- Describe the OASIS Project within ODFW
- ODFW and Johnson Creek WC partnership history
- Coho data
- Steelhead/Lamprey data
- Urban stream surveying constraints
- Future monitoring improvements within Johnson Creek





## **The Oregon Plan Requires**

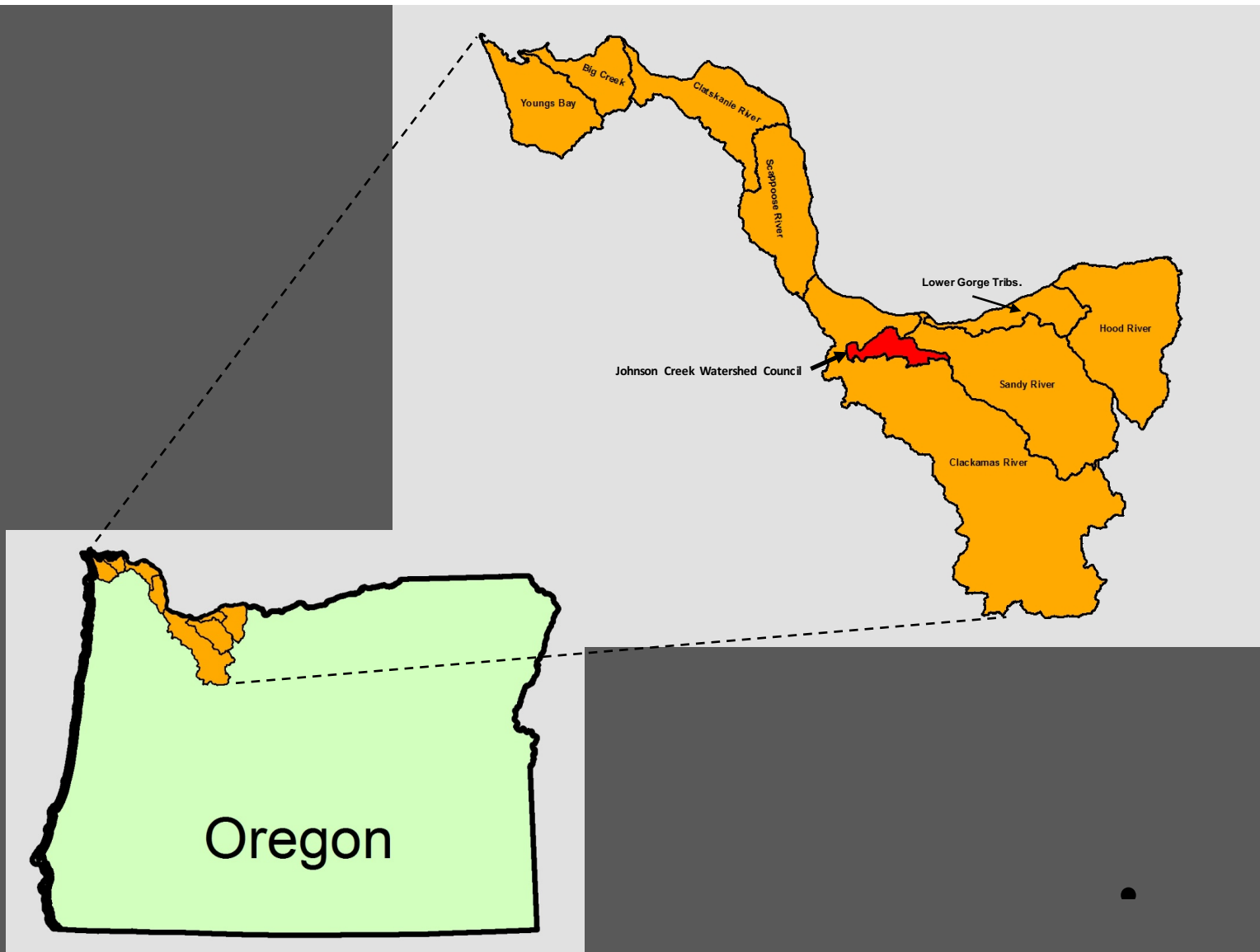
**Improved Monitoring to provide statistically  
rigorous data on the  
Status, Trend, and Distribution  
of Salmon Populations**

### **Three Main Projects**

**Habitat - Aquatic Inventories Project (AQI)**

**Juveniles - Western Oregon Rearing Project (WORP)**

**Adults - Spawning Surveys Project (OASIS)**



## Partnership History

- Began in 2011 for coho surveys.
- Full monitoring design Starting in 2012 (Coho) and 2017 (Steelhead).
  - 5 fixed sites
  - 2 to 3 exploratory sites within basin yearly

# ODFW/Johnson Creek Volunteer Coho Survey Coverage (2012-2016)



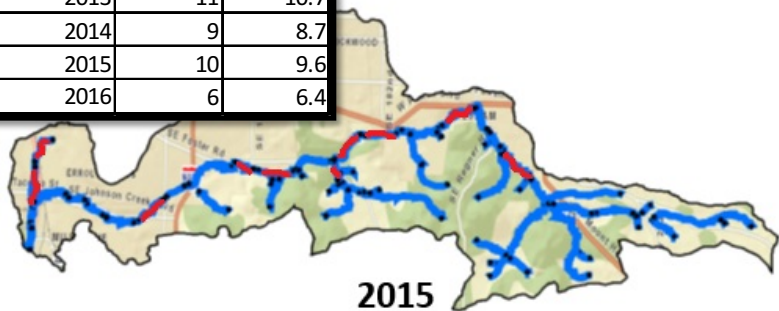
2012



2013



2014

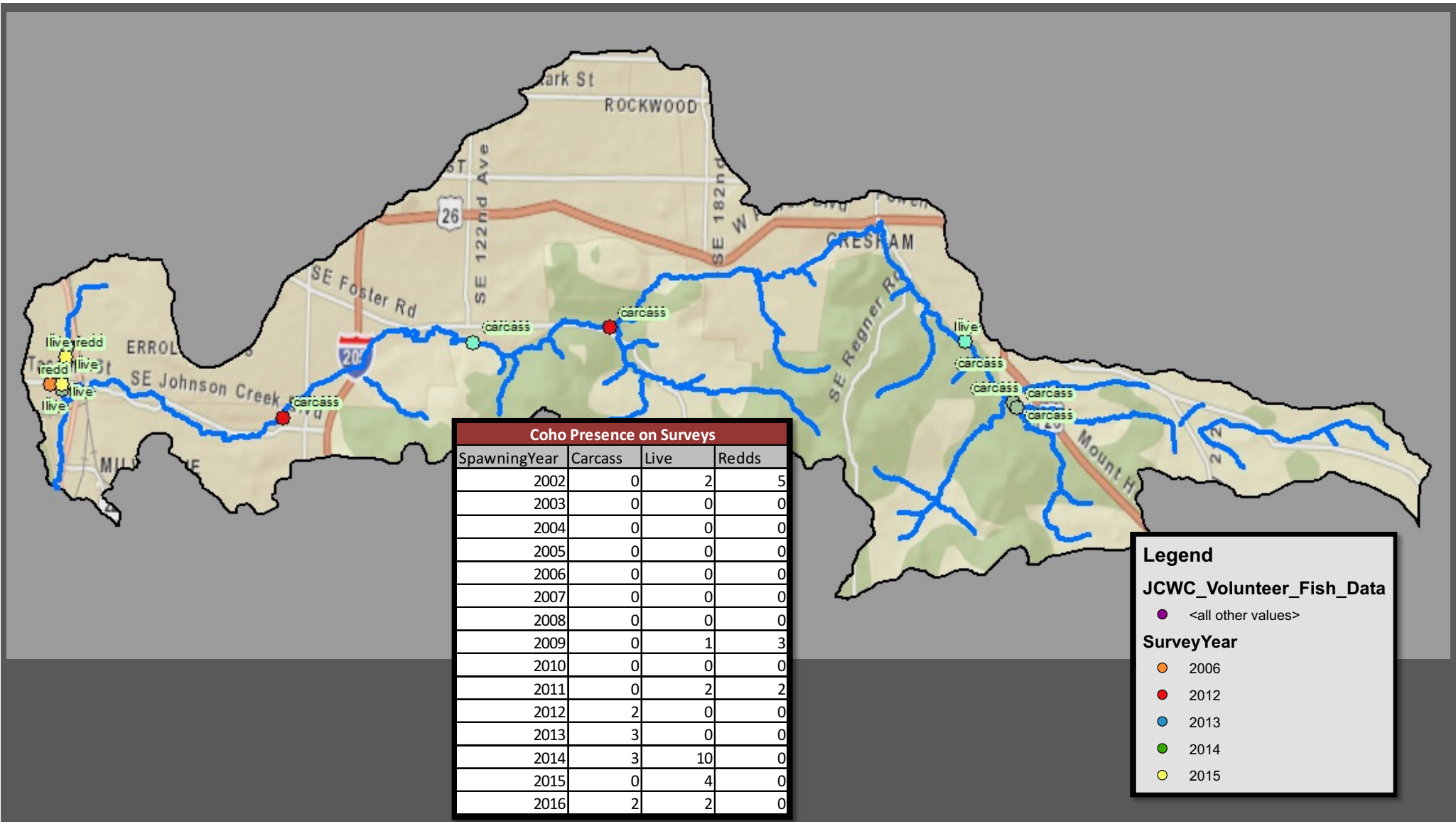


2015



2016

Coho Survey Mileage		
SpawningYear	Surveys	Miles
2002	5	5.2
2003	2	1.7
2004	6	4.9
2005	4	3.8
2006	4	3.8
2007	1	1.2
2008	2	2.1
2009	4	3.5
2011	9	7.8
2012	10	9.0
2013	11	10.7
2014	9	8.7
2015	10	9.6
2016	6	6.4



2013

Ste

STW Survey Mileage		
SpawningYear	Surveys	Miles
2004	3	2.8
2012	2	1.7
2013	2	2.0
2014	1	1.2
2015	1	1.1
2016	4	3.9
2017	9	8.4

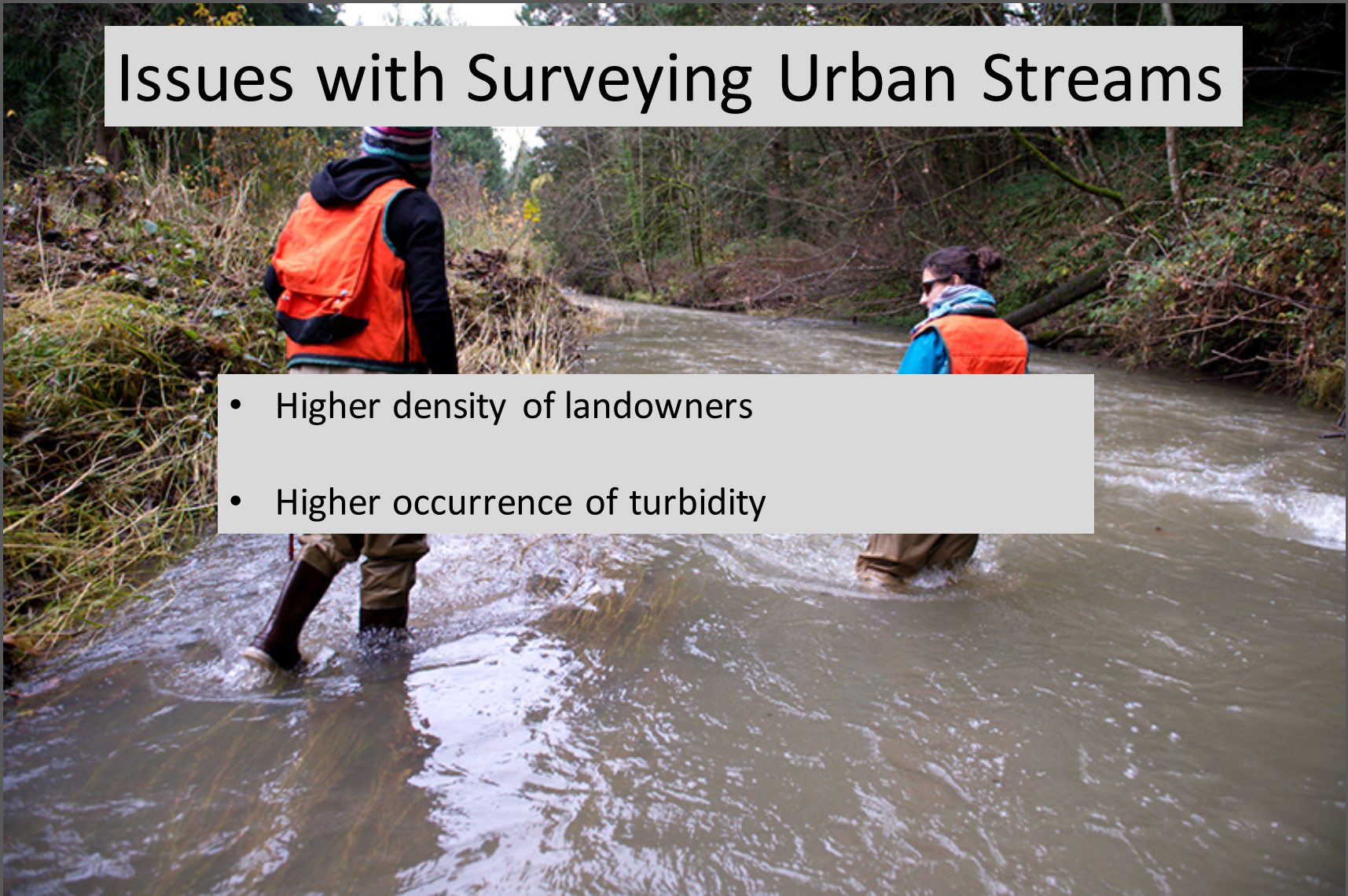
### JCWC Volunteer /ODFW Effort



Steelhead/Lamprey Presence on Surveys						
SpawningYear	Brook Lamprey		Pacific Lamprey		Steelhead	
	Live	Redd	Live	Redd	Live	Redd
2004	0	0	1	1	0	0
2012	0	0	0	0	0	0
2013	0	0	0	0	0	0
2014	0	0	0	0	0	0
2015	19	65	0	0	0	0
2016	65	18	0	3	0	0
2017	35	5	0	0	0	0

# Issues with Surveying Urban Streams

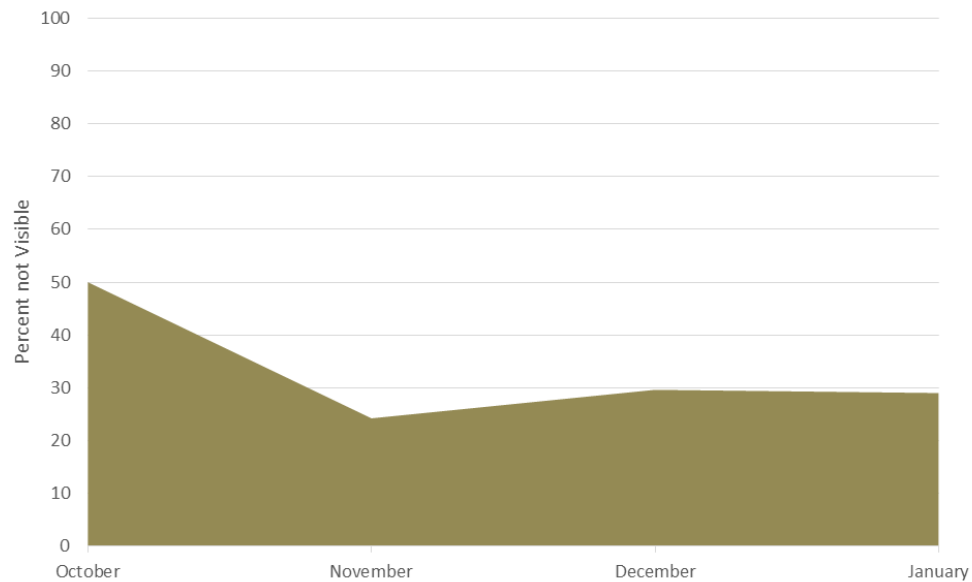
- Higher density of landowners
- Higher occurrence of turbidity



# Stream Visibility on Surveys

## Urban Streams

**2016 Clackamas Population**  
**Percent of Surveys Not Visible**



## Forest Dominated Streams

**2016 Sandy Population**  
**Percent of Surveys Not Visible**

