

Dam Beavers! Dam!

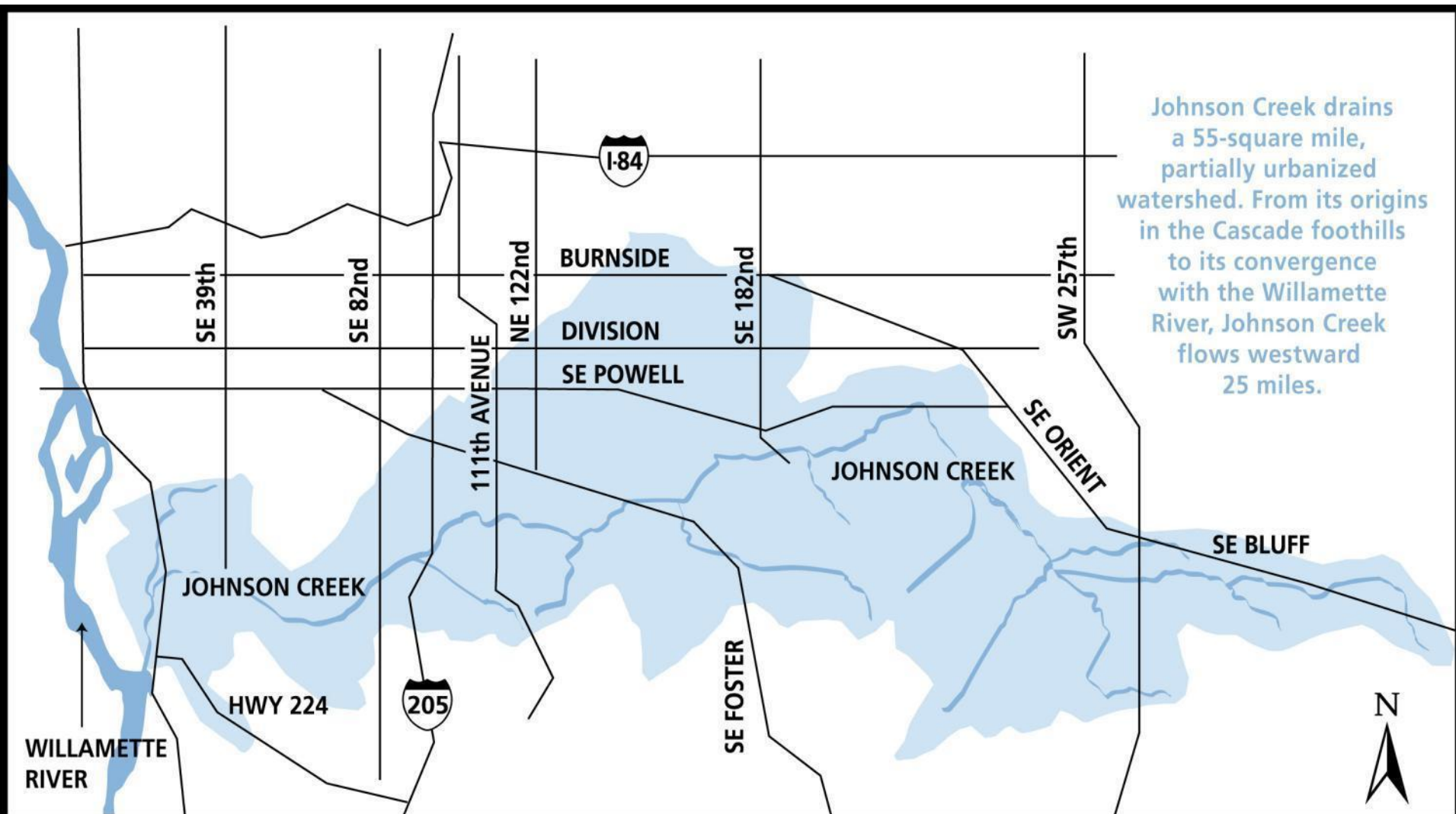


Working with beavers to restore hydrology and habitat in Johnson Creek

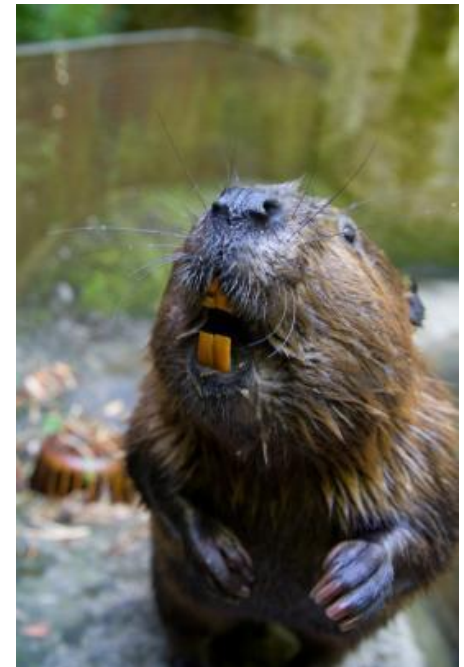
Kate Holleran,
Senior natural resource scientist
Metro
August 2019



Metro | *Making a great place*



Metro | *Making a great place*



Castor canadensis

How do beavers affect the land?

- Modify peak flows
- Store floodwater
- Decrease velocity
- Traps fine sediment
- Creates wetlands
- Store woody debris
- Creates slack water for juvenile fish
- Nesting habitat for birds, mammals, turtles, salamanders, amphibians
- Recharge/elevate the water table
- Increase habitat complexity
- Coho productivity and survival higher in beaver complexes.



Setting the table for beaver

- Control invasive plants
- Beaver menu

Favor deciduous plants, mixed with less palatable food-for when the beaver leave...

Willows, cottonwood, alder, sedges and rushes/ spiraea, rose, elderberry, cascara,

- Plant a lot of plants-
1500-2200+ plants per acre
- Expect to come back to replant in urban areas







7/2016

Springwater Corridor Trail

165 ft

Google

Tour Guide

Imagery Date: 7/23/2016 45°28'47.39" N 122°29'52.99" W elev 0 ft

Information needs specific to Johnson Creek:

- How do beavers affect the land?
- How do we work with beavers to restore hydrology and habitat to natural areas?
- Where are beavers in Johnson Creek?
- Why are they there? Food source, security...



Beaver dam surveys

- Where are beaver in Upper Johnson Creek?
- Is the use changing over time?
- How are beaver using the vegetation?
- How are beaver changing the aquatic and riparian conditions?
- Are beaver impacting private lands?



Spring 2015 beaver dam survey



Fall 2015 beaver survey



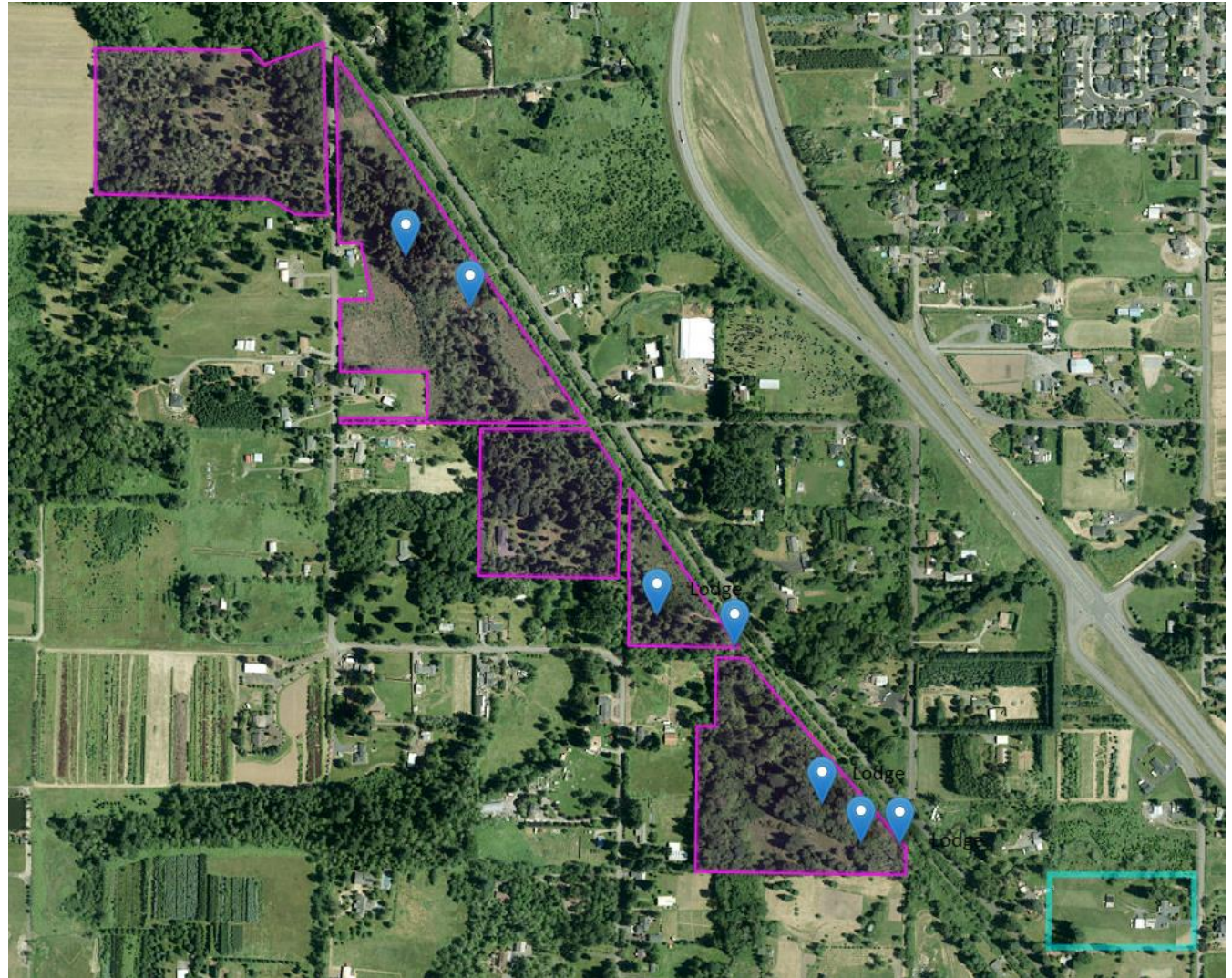
Fall 2016 beaver survey



Spring 2017



Spring 2018

















How will we use the data?



- Track change over time-expansion or contraction of beaver activity
- Track where dams are consistently rebuilt
- Use data to inform restoration work



Thank you!

Kate.hollaran@oregonmetro.gov