

QUICK GUIDE TO DAMSELFLY & DRAGONFLY FAMILIES

Most useful features for identification:

	Damselfly (pg. 2)	Dragonfly (pg. 3-4)
Head	eye color; eye spots/bars	eye color & shape; color & markings on face (T-spot, line)
Thorax	shape & color of stripes on top & sides	presence, shape, and color of stripes on top & sides
Abdomen	color; markings on top, esp. S2 and S8-S10	color; markings on top & underside; presence of "club" at tip
Wings	color & shape of stigma; orientation when perched	color of wing bases, veins, and stigma; color & shape of wing spots, bands, or patches
Legs	color	color

Forewings & hindwings similar in size & shape, held together over abdomen or no more than partly spread when perched; eyes widely separated (i.e., by the width of the head)



Damselfly



Vivid Dancer (*Argia vivida*); CAS Mazzacano

1

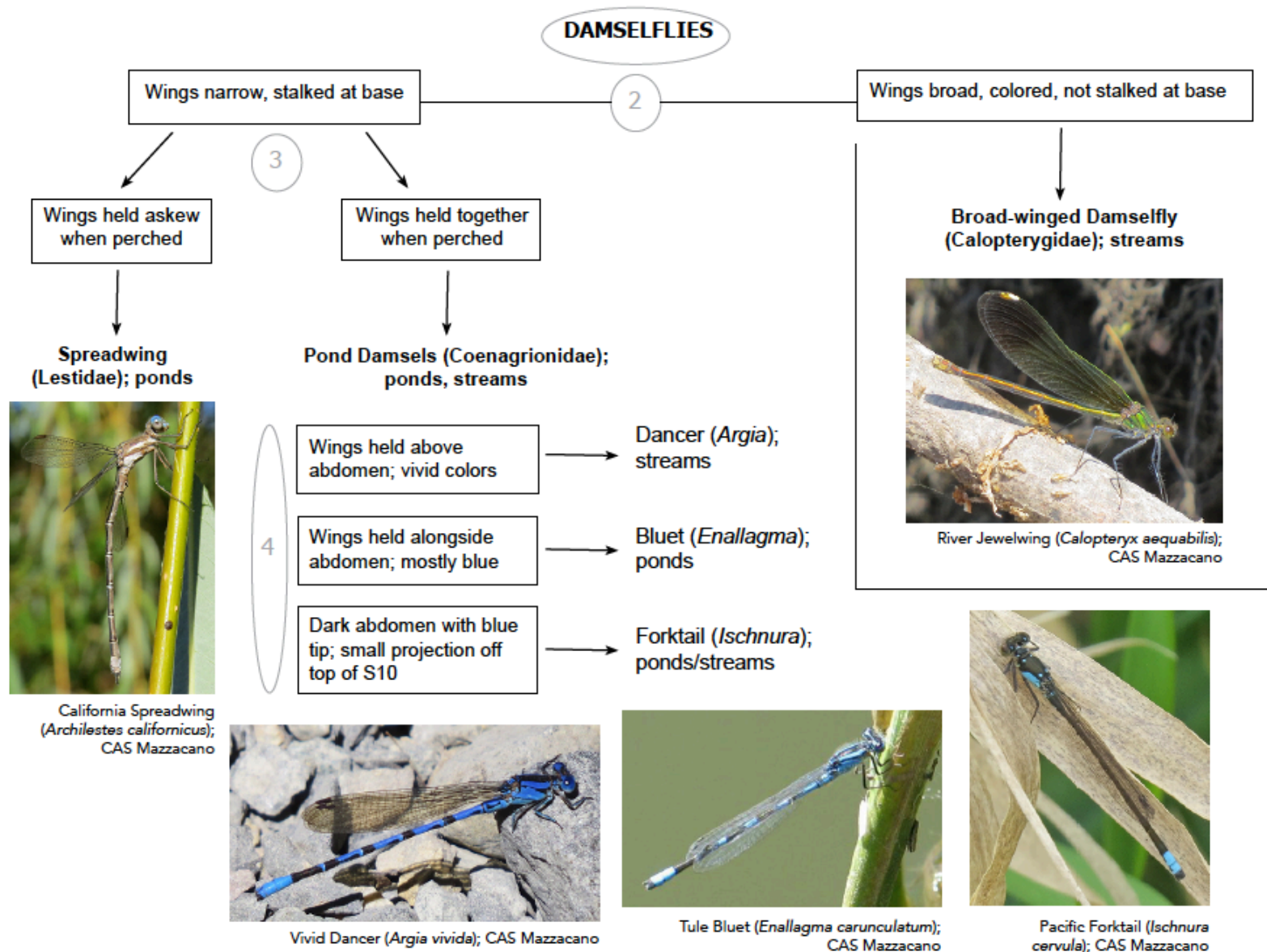
Hindwings broader than forewings; wings held out horizontally when perched; eyes meet at front of head or slightly separated (i.e., by less than the width of the head)

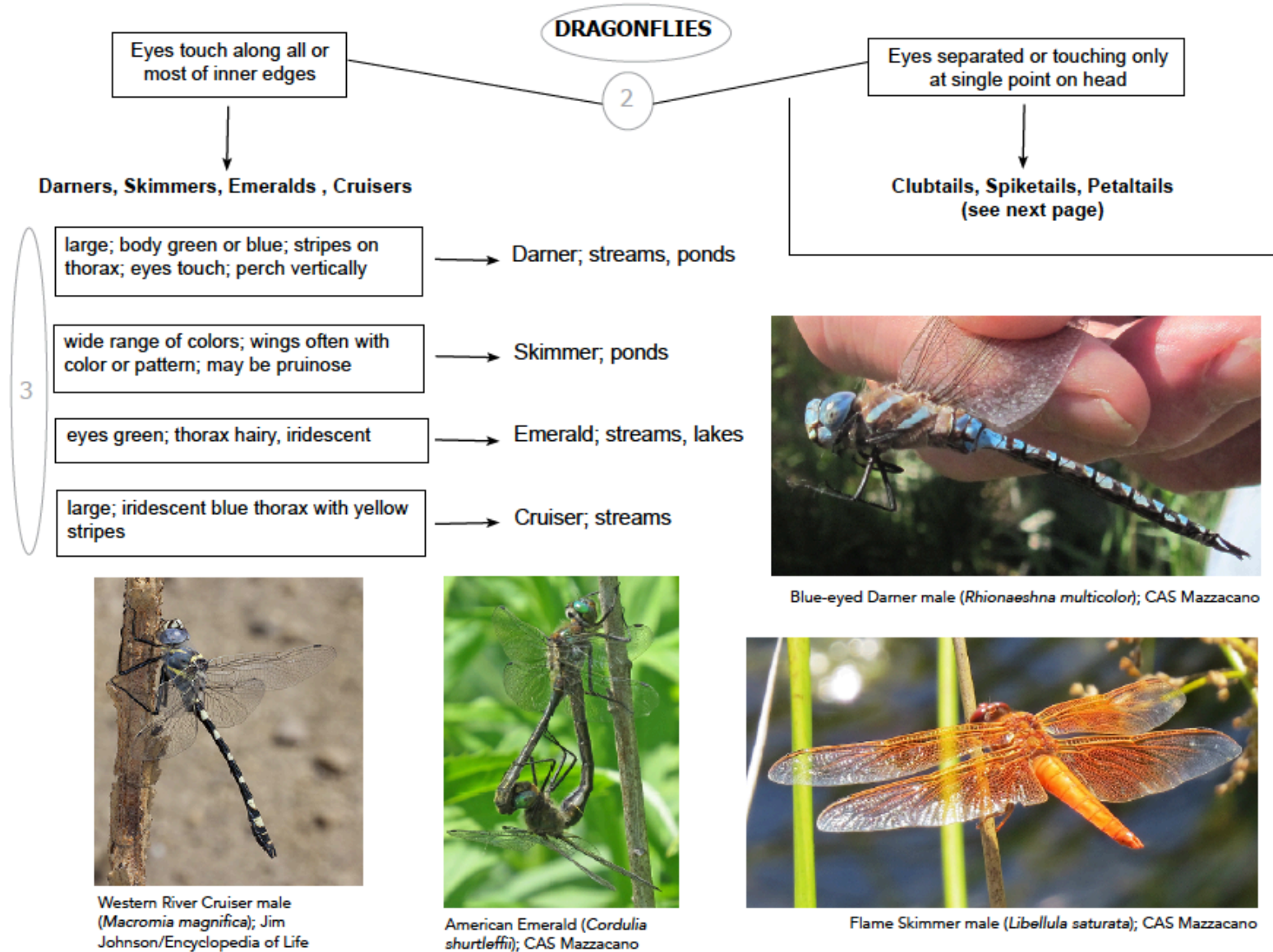


Dragonfly



Cardinal Meadowhawk (*Sympetrum illotum*); CAS Mazzacano





DRAGONFLIES

Clubtails, Spiketails, Petaltails

4

eyes separated; terminal segments of abdomen expanded; green & brown or black body



Clubtail*; mostly streams



Bison Snaketail male (*Ophiogomphus bison*); CAS Mazzacano

eyes touch at single point; large; brown or black & yellow body; lower tip of female abdomen has spike; perches at 45° angle



Spiketail; small streams



Pacific Spiketail male (*Cordulegaster dorsalis*); John Martin/iNaturalist

eyes separated; large; black body with yellow spots on thorax & abdomen



Petaltail; bogs, seeps



Black Petaltail (*Tanypteryx hageni*); CAS Mazzacano

*In 2017, the genus *Gomphus* was re-organized and is no longer recognized as valid in North America. Visit www.OdonataCentral.com and click on Official Checklist to North American Odonata for current genera.

Cordulegaster dorsalis is the only spiketail species known in Oregon.

Tanypteryx hageni is one of only two petaltail species in North America & has a very narrow western range; the Gray Petaltail (*Tachopteryx thoreyi*) is found in the east.