

Kelley Creek Dam Removal

Chuck Lobdell

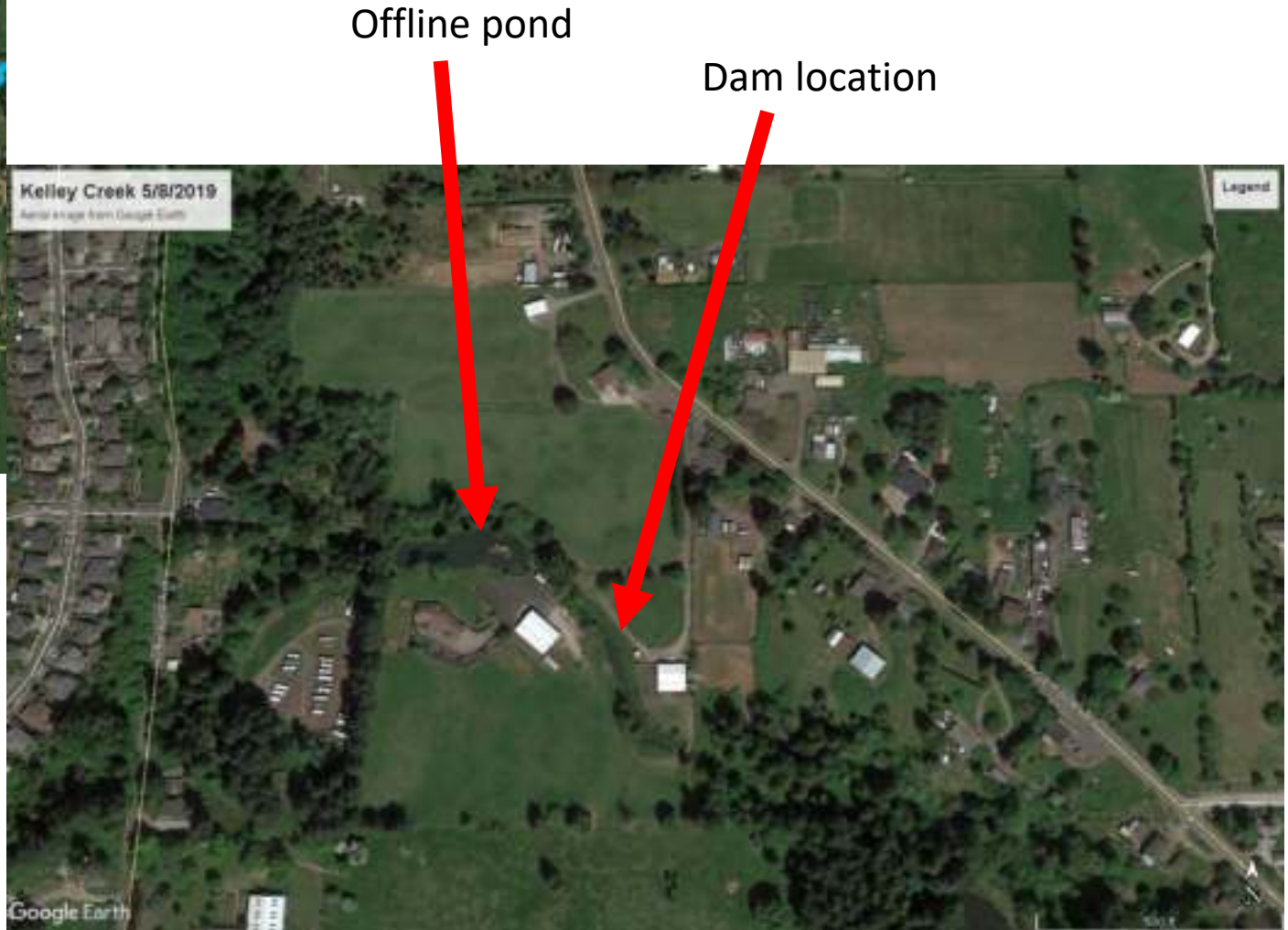
2020 Science Symposium





Kelley Creek sub-watershed:

- Largest tributary to Johnson Creek
- Valuable cold water stream habitat
- Part of JCWC climate change strategy
- Kelley Creek dam removal opens the gateway!



Initial concept was a roughened channel to provide passage over the dam

Contracted Waterways engineering in 2017 to develop 30% plans

Landowner suggested removing the dam!

Plan evolved to remove dam, transfer water POD and install submersible pump

Dam removal completed August of 2020!

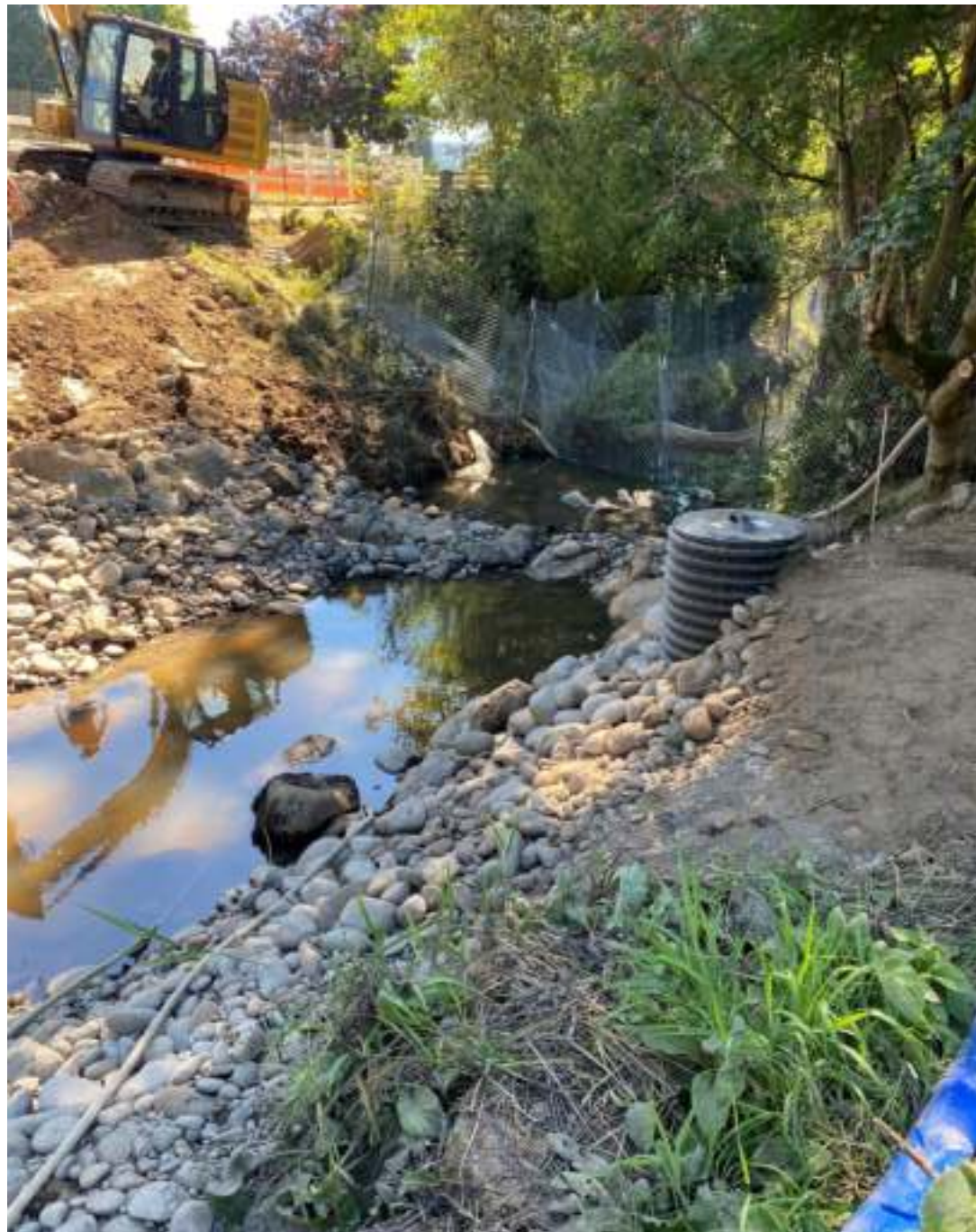






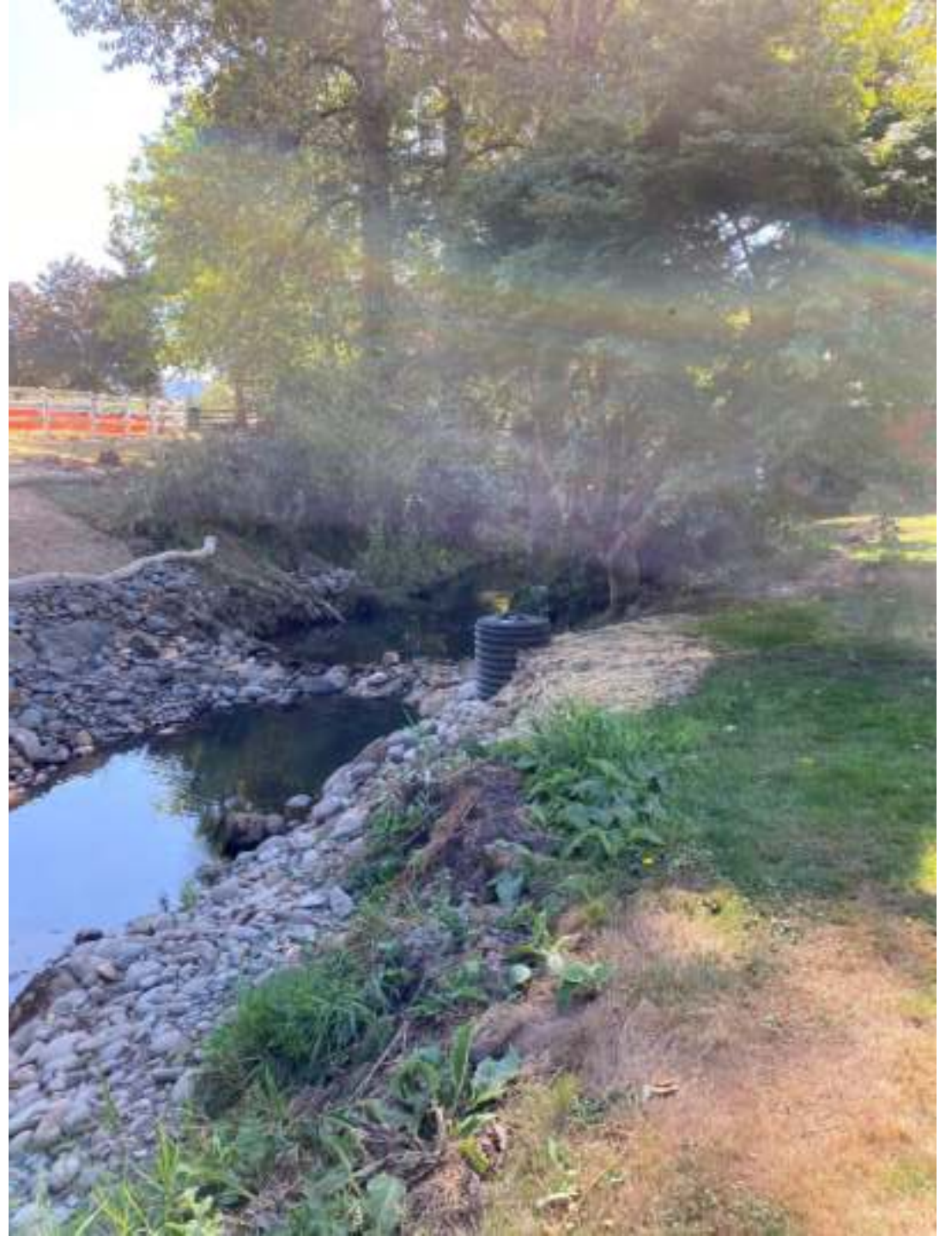














our partners!



American Rivers
RIVERS CONNECT US®

American Rivers/
Paul Allen Foundation



East Multnomah SWCD



Oregon Watershed
Enhancement Board
Clackamas FIP



Schnitzer Steel