



Johnson Creek Watershed Council

Within Your Reach

reach: a) a portion of a stream or river b) an extent, esp. of knowledge or comprehension

Kelley Creek Dam Removal Complete!

Chuck Lobdell, JCWC



Kelley Creek looking upstream from the former dam.

In August of 2020 we completed the removal of a 5.5' tall dam in the lowest reach of Kelley Creek; a fish passage barrier that formerly affected fish migration into the entire Kelley Creek sub-watershed for 30 years.

This project began in 2015, with the idea that fish passage could be engineered around this dam whose sole purpose was to check water upstream to feed a gravity flow water right to an offline pond.

In 2017, we received funding from the Oregon Department of Environmental Quality through a program that directs fines from water quality violations to direct, on the ground conservation work. Through this, we hired Waterways Consulting and began conceptual design of three alternatives that would provide fish passage past the dam.

To our surprise, after considering the three alternatives we presented the landowner asked us why not just remove the dam. The ball was in motion and we never looked back!

With our goal being fish passage and the landowner's interest being water to the offline pond we designed a project that would effectively and efficiently accomplish both. We removed the dam and constructed an engineered stream bed to ensure channel stability where the dam had stood since 1989, restoring fish passage upstream.

We also transferred the landowner's water right Point Of Diversion downstream next to the

—(Continued on page 3)



Kelley Creek Dam before removal.

Lower Johnson Creek Large Wood Enhancement Complete

Chuck Lobdell, JCWC

JCWC recently completed another instream restoration project in the lower reaches of Johnson Creek to provide large wood resting cover for salmon during migration.

The lower portions of Johnson Creek are particularly valuable habitat to salmon given there are three cold water inputs and the proximity to the mainstem Willamette. The lower portion of Johnson Creek boasts cooler water temperatures in summer than both the Clackamas and Molalla Rivers. This reach is also channelized and mostly void of complex habitat such as pools and log jams.

Working with the Oregon Department of Transportation, and the Oregon Watershed Enhancement Board we completed a project this past summer

—(Continued on page 6)



Newly restored salmon habitat in lower Johnson Creek

2020

Daniel Newberry, JCWC Executive Director

So much has changed this year and we have felt it here at JCWC. Shortly after our annual Watershed Wide Event in March, restrictions on social gatherings due to the coronavirus pandemic obliged us to cancel all our volunteer events for many months. We closed our office and staff has been working at home most of the time.

In the midst of the pandemic, however, we've discovered different opportunities to stay connected with our volunteers, partners, donors and social media followers. We now have a monthly educational Zoom webinar with live streaming to Facebook. More than 700 people watched one month! What does it mean to stay connected? What does it mean to engage the community in our work during this time? This is an evolving learning experience.

We have restarted our volunteer program, albeit on a smaller scale because of health concerns and restrictions on large gatherings. We reimagined our annual stream cleanup as several smaller events, held simultaneously at different locations, with volunteers cleaning garbage from the stream banks because it's easier to socially distance when you're on land rather than in water.

The inequitable, violent treatment of black citizens (and indigenous and other people of color), both locally and throughout the country, has hurt and disrupted our society. Early on, JCWC made the decision to speak out publicly in support of peaceful protests for the Black Lives Matter movement.

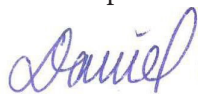
As a general rule, we are a non-political organization. But as an organization working to be more inclusive, we feel we cannot stand by, silent, while so many of our partner organizations, our neighbors and volunteers and those within their circles are suffering from racial injustice. We've been using our news bulletins, blog and social media to continue to speak out and to center the voices from organizations suffering the most impacts from racial injustice.

The devastating fire season, including the extended period of smoke-induced air quality, has highlighted how the impacts of climate change are an issue of environmental justice, most specifically on low-income communities: the houseless community has fewer options to remain indoors to avoid smoke than most people.

Here at JCWC, we continue to look for ways to mitigate the impacts of climate change—such as planting trees and improving fish habitat in natural cold water areas—and to advocate for ways we can change our lifestyles to minimize climate change.

Throughout the challenges this year, we've managed to thrive. Our instream habitat enhancement and fish passage construction projects continued on schedule (featured in this newsletter), our tree planting and stream monitoring programs continue unabated. And even though many of us have had a difficult time financially, we're deeply grateful to you, our supporters, both individuals and businesses, for making our virtual Annual Celebration a success through your donations and participation.

Thank you for being part of the JCWC community. With all of your support, we're well-positioned to continue to thrive in 2021.



Daniel Newberry, Executive Director

East Multnomah SWCD

This year's amount: \$76,666

This helps to support these program areas: Riparian, Instream, Community Science, Equity and General Support for a 5-year period.

Clackamas Water Environment Services

\$22,769

Partially funds our Watershed Wide Event, Creek Cleanup, CreekCare, Service learning with schools and one Science in the Park event.

The Herbert A. Templeton Foundation

\$6,000

Helps support our Service Learning with Schools.

City of Portland Environmental Services

This year's amount: \$45,000

Funding for Watershed Protection and restoration, community science programs and optional watershed restoration projects for a 5-year period.

City of Milwaukie

This year's amount: \$7,500

Funding for a CreekCare program for residents along Johnson Creek in the City of Milwaukie for a 6-year period.

The Collins Foundation

\$15,000

Funding to support our Leach Botanical Garden habitat restoration project.

Clackamas Soil and Water Conservation District

\$2,500

Helps to fund a CreekCare program for residents in the upper Johnson Creek watershed.



(Continued from page 1)

pond, and installed a submersible pump to provide water to the pond. In addition we will install livestock exclusion fencing to protect the creek and begin revegetation of the riparian areas this winter.

The end result is a creek channel restoration that provides open migration to fish of all species, and the landowner is happy! This project was funded by grants from the East Multnomah Soil and Water Conservation District, American Rivers via the Paul Allen Foundation, and the Oregon Watershed Enhancement Board as part of the Clackamas Focused Investment Partnership.



Kelley Creek dam removal underway!



Kelley Creek Dam deconstruction in progress!

THANK YOU SPONSORS



WATERSHED
SCIENCE AND
ENGINEERING

SERVING
THE PACIFIC
NORTHWEST

wolfwaterresources.com

Working with nature
Partnering with people

Community Education Series - Bringing Events and Education Home

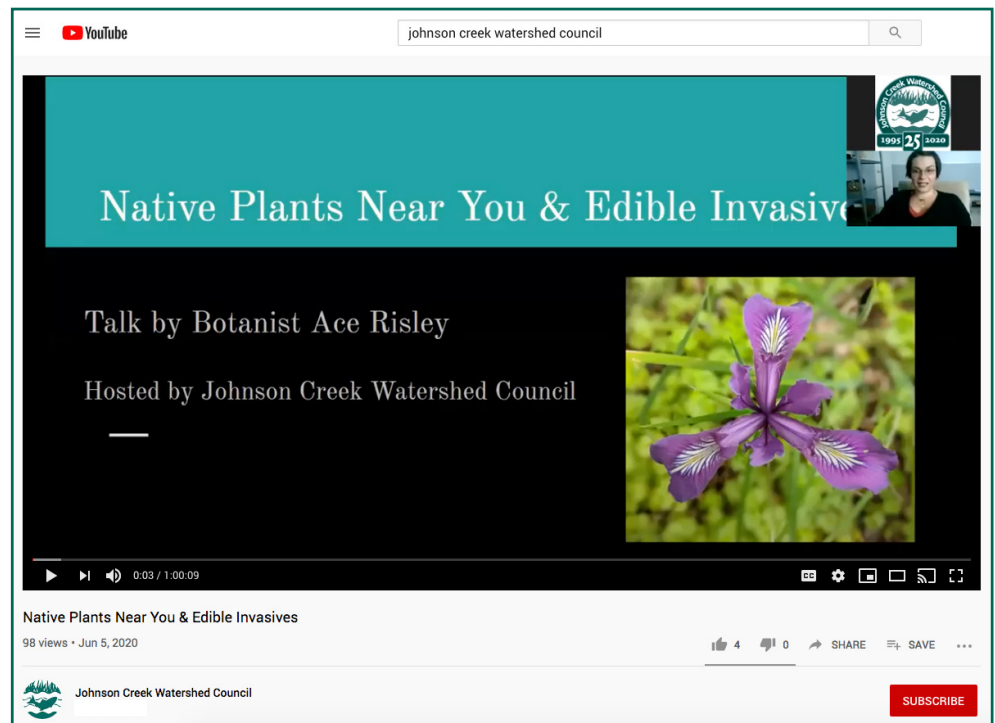
Tiffany Mancillas, JCWC Community Outreach Coordinator

During COVID-19, the ongoing fight for Black Lives Matter Movement, and multiple other crises facing the world and our nation it can be hard to attend *any* event let alone something educational. During this time, we have created the Community Education Series. These are free monthly events on various themes that you can join from home via Zoom or live-streamed on Facebook. All the webinars are virtual, free of cost and recorded.

The series can be viewed anytime from our YouTube channel as well. We have been happy to have over 1,000 of viewers join in live or watch the series after broadcasting.

We started doing online webinars about topics folks are excited to learn more about recently starting in June 2020. Some past ones have included *Native Plants Near You and Edible Invasives*, *Inside the Hive: Wasps and Bees of the Pacific Northwest*, *River Restoration with Ground Score*, *The Mystery of Microbes in Soil and Water* and *Power Mapping the Johnson Creek Watershed*.

Want to catch up on the series? Check out our Community Education Series playlist on the Johnson Creek Watershed YouTube Channel or catch the next one coming up by checking out the jcwc.org events calendar for updated information. If you have something to share and want to be a presenter or have an idea for a future topic please contact info@jcwc.org.



Aerial Yellowjackets (*Dolichovespula arenaria*)

- Small black and yellow wasps
- Annual colonies
- Nests are exposed, but comb is concealed by a spherical, papery shroud
- Nests grow up to the size of a watermelon
- Nests are commonly found hanging from roof eaves, branches, and shrubs
- Less aggressive than most yellowjackets, but will readily defend their nest when disturbed





CLACKAMAS
WATER
ENVIRONMENT
SERVICES



ENVIRONMENTAL SERVICES CITY OF PORTLAND

working for clean rivers

*Bureau of Environmental Services is a mission-driven, high-performance organization,
leading the City in preserving and restoring the health of Portland's watersheds.*

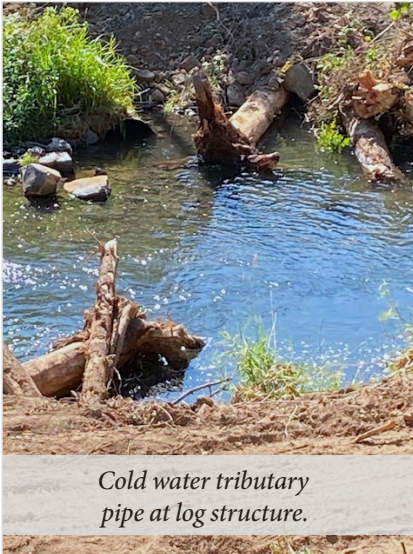
Lower Johnson Creek Continued

(Continued from page 1)

that installed 7 complex log structures and created 6 new pools on Oregon Department of Transportation's property under the cloverleaf where Highway 99 South meets 224 East.

Our initial design concept, working with our engineers at Wolf Water Resources, was to maximize the number of structures we could put in. This would provide cover at low water while others were out of the channel, but also could function as habitat and refuge during high flows. Hydraulic modeling, however, showed that fewer structures would be necessary to avoid affecting flood water elevations and our neighbors. So the design was altered to both avoid flooding and provide resting cover for salmon.

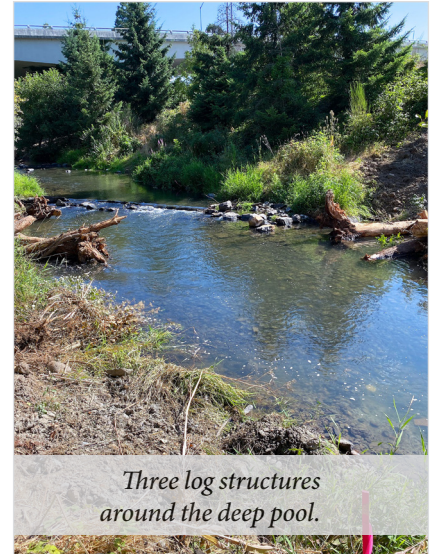
This is the third large wood enhancement JCWC has completed in the lower portion of Johnson Creek, and we are excited about two more such projects in the near future!



Cold water tributary pipe at log structure.



Excavation for key log complex at cold water tributary.



Three log structures around the deep pool.

THANK YOU SPONSORS



Thank you



for sustaining our efforts as a
COHO Level sponsor!



Martina's Approach: The Art and Science of Watershed Restoration and Community Outreach



Martina working on a Beaver Survey in Johnson Creek

Martina Avendano has been working seasonally with the council and has done an incredible range of work: from macroinvertebrate sampling, leading bilingual and Spanish language restoration and exploration events, conducting beaver surveys, and re-signing the watershed with fresh 'Johnson Creek Watershed' signs. We originally hired her for a Bilingual Nature Position and as new project needs arose she was able to step into new roles quickly and take on multiple projects. A three month internship quickly turned into a nine month season with the council. We want to share some of the incredible work she has done and more about her.

She has led bilingual Spanish/English restoration events both in coordination with partner agencies during Watershed Wide-at the Main City Park site in Gresham and independently in the virtual format (¡El Portal al Boring Campo de Lava!) and spent time conducting outreach in the community and behind the scenes work in digital media and communications.

Martina's background in field-work shined during long hours of both beaver and macroinvertebrate

surveys in remote reaches of Johnson Creek. As you can tell by all the different projects she's working on, she's definitely skilled in project management!! She is a great addition to the team!

She was born in Oaxaca, Mexico but moved to Oregon when she was four and has been living here ever since. She graduated from Warner Pacific University and is passion-

ate about using what she has learned to help her community. Her love for nature began in her youth going to Oxbow Park with her family to picnic, spend time by the river and just be outside.

Today, that love has translated into wanting to be a steward for the natural world in order to preserve it for future generations to come. The Portland metro area has so much to offer in terms of getting out into nature and she is excited about continuing to work to break down potential barriers that could be preventing people from getting out there. When she is not outside, she enjoys spending time with family and friends, watching movies, painting and baking.

A big thank you goes out to Martina and all her hard work!



Martina Exploring in Nature



**Backyard Habitat
Certification
Program**



Bring nature into your
outdoor space and make
your yard healthy for
people and wildlife!

Learn more at
backyardhabitats.org

There is a small one-time fee.
Financial assistance is available.

**CITY OF
GRESHAM**

Thank you sponsors!

Photo: Rachel Ames/NPS



Welcome Watershed Engagement and Salmon Survey Intern Emily

Welcome Emily!



Emily D'achiardi will be serving as our salmon survey intern for the 2020-21 term! She is from Atlanta, Georgia and is currently a freshman at Reed College pursuing an undergraduate degree in environmental studies. She plans to have a concentration in either political science or biology for her major.

Throughout her high school career she has seized opportunities to inform her peers and surrounding communities. She was dedicated to the HighSteaks Movement, an initiative to educate high school and middle school kids on the urgency of climate action and the importance of food choices. Emily worked with Atlanta Public Schools officials and HighSteaks to permanently remove beef from the lunch menu and replace it with more sustainable plant-based options. As student government president, she centralized on a green campaign that prioritized environmentally cautious events, such as the Global Climate Strike in 2019.

Emily is eager to bring this same energy to JCWC and invoke community support, even in a socially distanced world. As an intern, she is thrilled to join the scientific community and gain knowledge not only on the wildlife itself but as well the impact we have on it.

THANK YOU SPONSORS



Photo: Lloyd Vivola

Welcome New AmeriCorps Riparian and Outreach Specialist Katherine



Katherine Charney will be serving as a Confluence AmeriCorps member for the 2020-21 term! Originally from the east coast, Katherine graduated from the Maryland Institute College of Art in Baltimore with a Bachelor of Fine Arts. In her role as Riparian and Outreach Specialist, she is excited to implement and maintain restoration projects along Johnson Creek, as well as organize volunteer events. She is passionate about the role creativity can play in environmental education, and looks forward to using her visual arts training to advance this work as we continue to socially distance.

Katherine cares deeply about environmental justice and establishing equitable access to the outdoors. In 2016, she joined Southwest Conservation Corps as a trail crew member in the Colorado Rockies. She brought this formative training back to Baltimore, where she designed an educational booklet on local watershed pollution in collaboration with visual artist, Phaen Howng, and non-profit organization, Blue Water Baltimore. This publication was available free to the public, thanks to support from The Baltimore Museum of Art.

This is not Katherine's first time in Oregon — after graduating in 2019, she worked for Crow's Shadow Institute of the Arts on the Umatilla Reservation in Eastern Oregon. There, she expanded digital capabilities for the artist-in-residence program and assisted with weekly workshops for local high school students. She looks forward to serving diverse communities while learning and collaborating during her AmeriCorps term.



Katherine on a hike.

THANK YOU SPONSORS

Thank you Moda!

We would like to express our gratitude to Moda for printing our newsletters.





4033 SE WOODSTOCK BLVD,
PORTLAND, OR 97202

Change Service Requested

Nonprofit Org
US Postage Paid
Portland OR
Permit No. 1153

Upcoming Events

See our website at JCWC.org or Facebook for links to the following events!



Habitat Enhancement

Sat, Nov 7, 9 AM - 12 PM
Friends of Tideman Johnson



Board Meeting

Mon, Nov 9, 5:30 PM
Online--request a Zoom link at info@jcwc.org



Habitat Enhancement

Sat, Nov 21, 9 AM - 12 PM
Friends of Errol Heights



Habitat Enhancement

Sat, Dec 5, 9 AM - 12 PM
Friends of Tideman Johnson



Monthly Virtual Community Education Series

On-going, various dates and times
Online Zoom and Facebook Webinars
Stay tuned on our website for upcoming events: www.jcwc.org

Thank you Moda!

We would like to express our gratitude to Moda for printing our newsletters.



Johnson Creek
Watershed Council

4033 SE WOODSTOCK BLVD
PORTLAND, OR 97202
503-652-7477



JohnsonCreekWC



Courtney Beckel
Volunteer Program Manager

Katherine Charney
Confluence AmeriCorps Member

Cathy Geiger
Operations & Finance Coordinator

Noah Jenkins
Riparian Program Manager

Chuck Lobdell
Restoration Project Manager

Tiffany Mancillas
Community Outreach Coordinator

Daniel Newberry
Executive Director