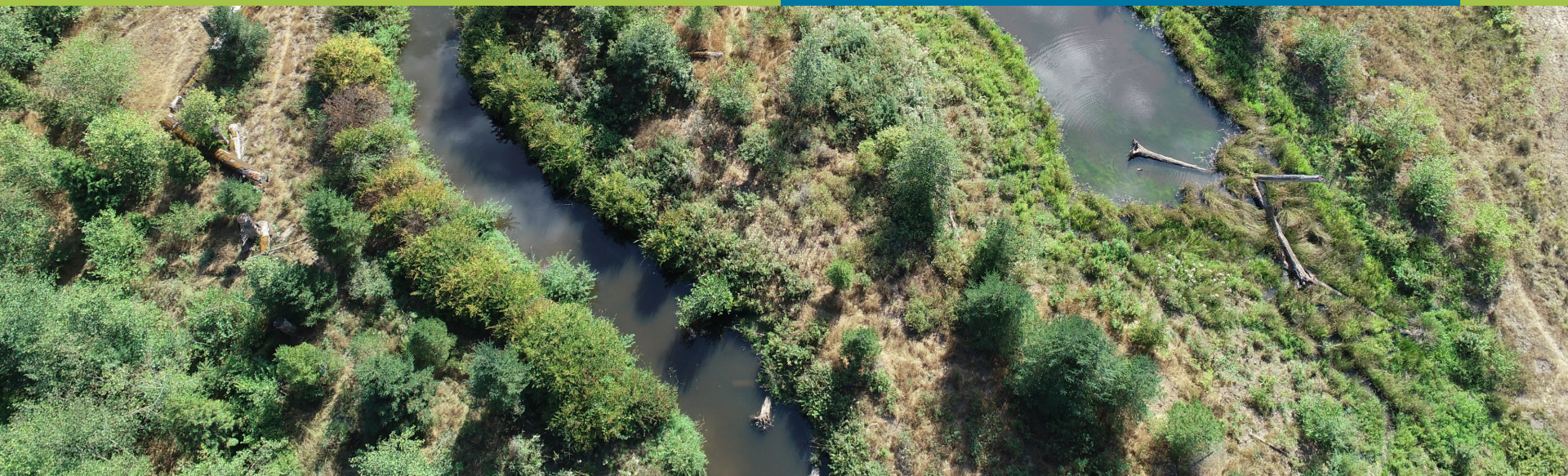


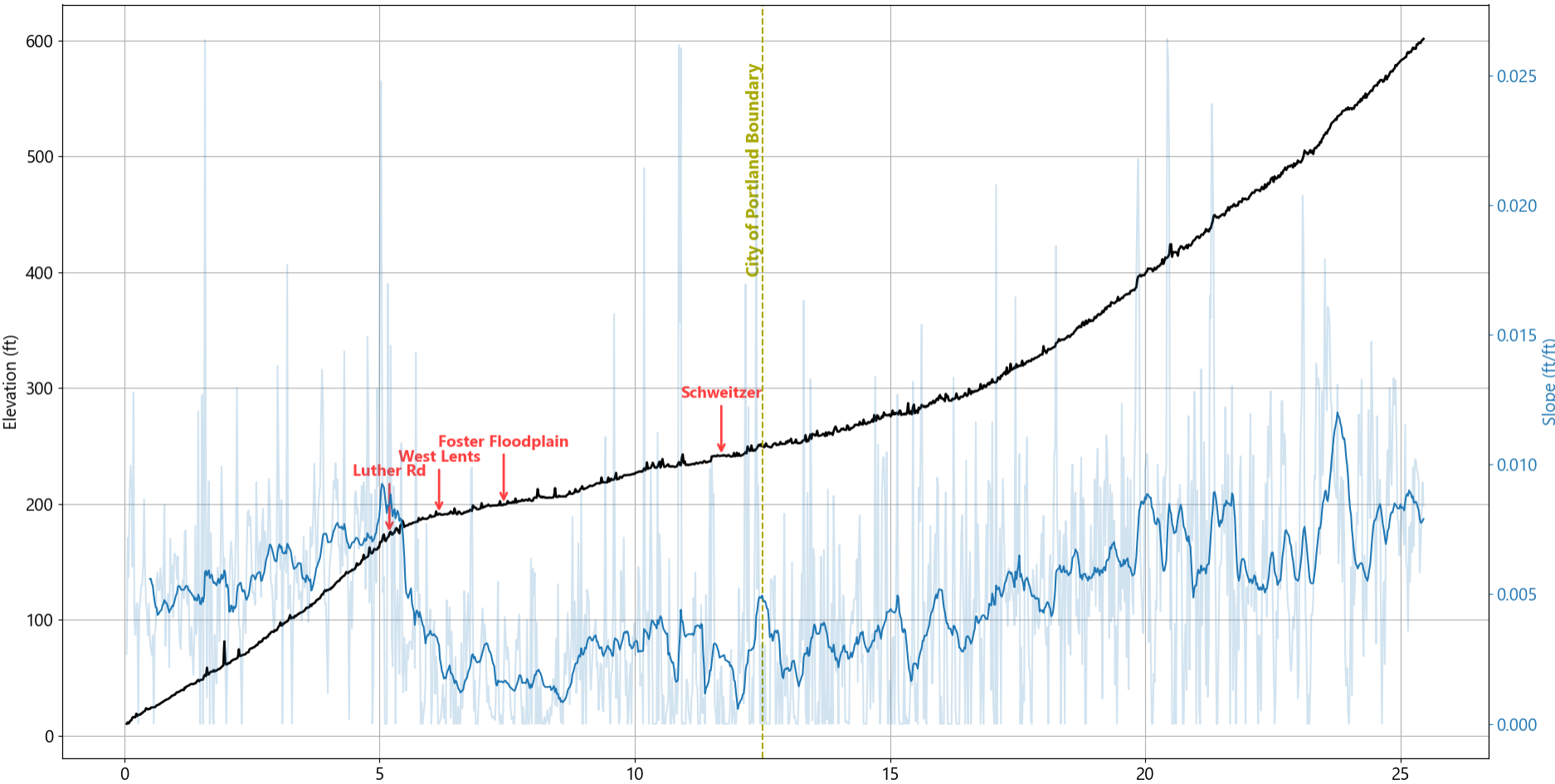


# POST-RESTORATION REVEGETATION

LUKE RUSSELL



# Some Context



2004

Schweizer



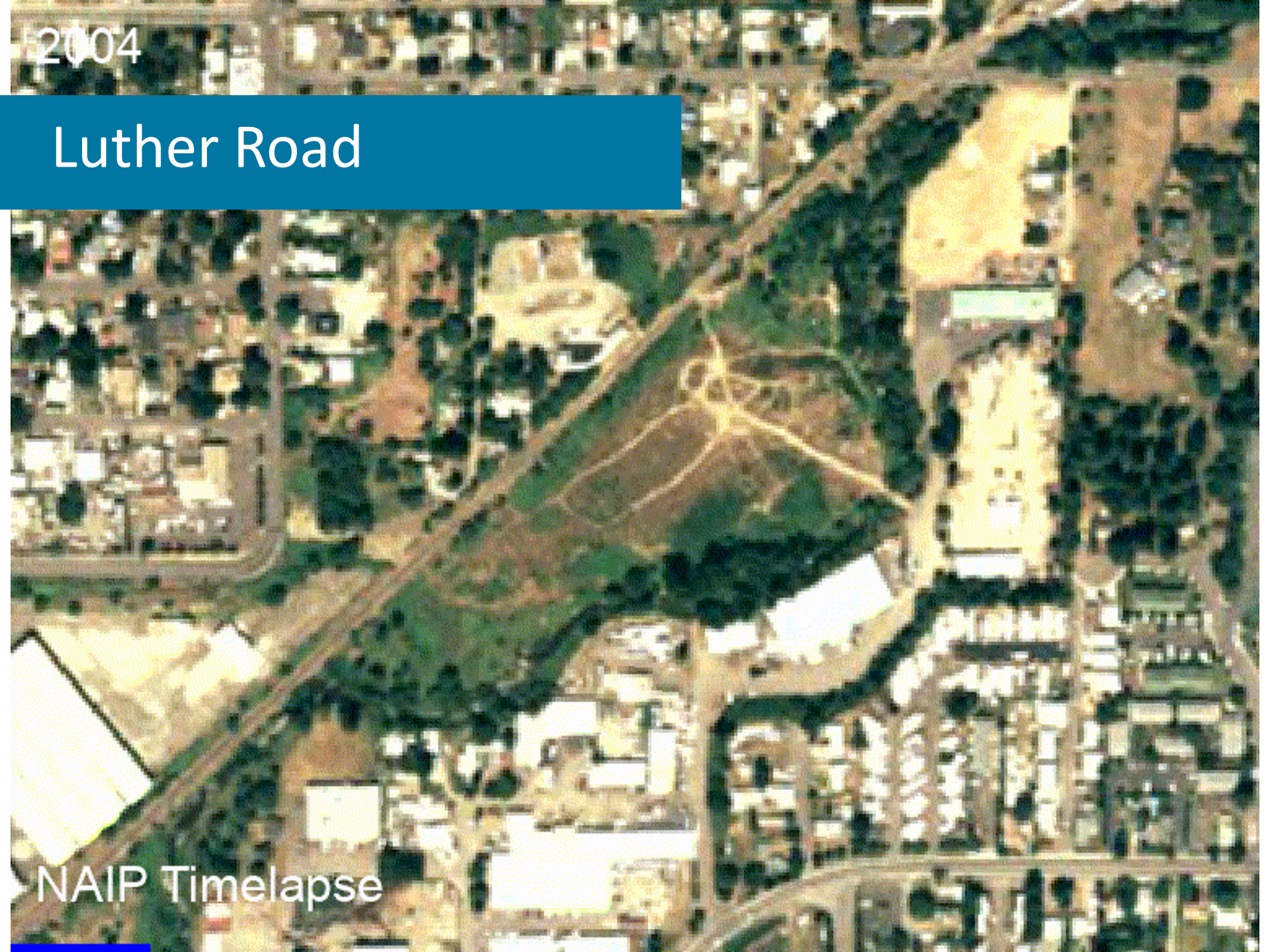
NAIP Timelapse



2004

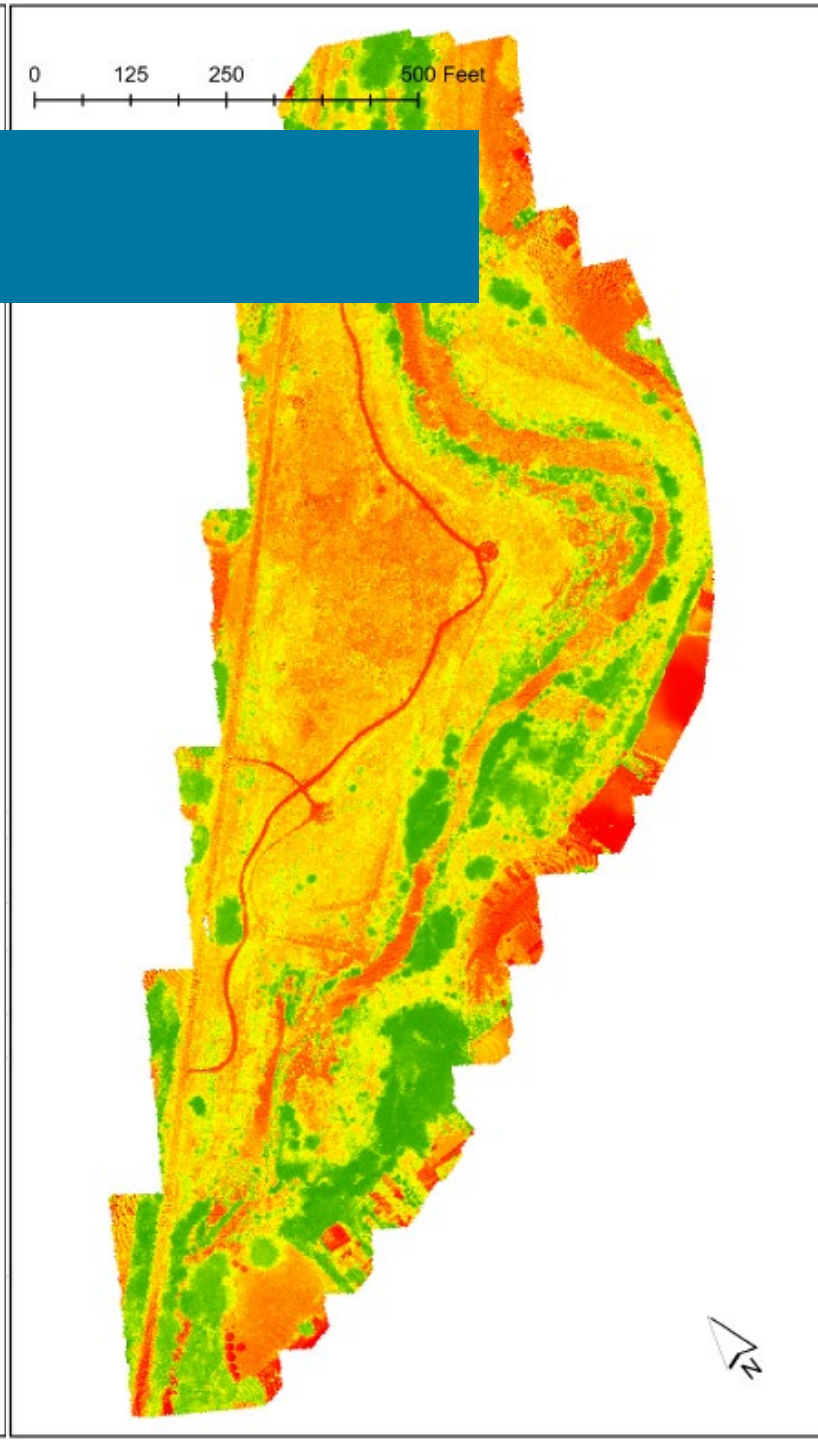
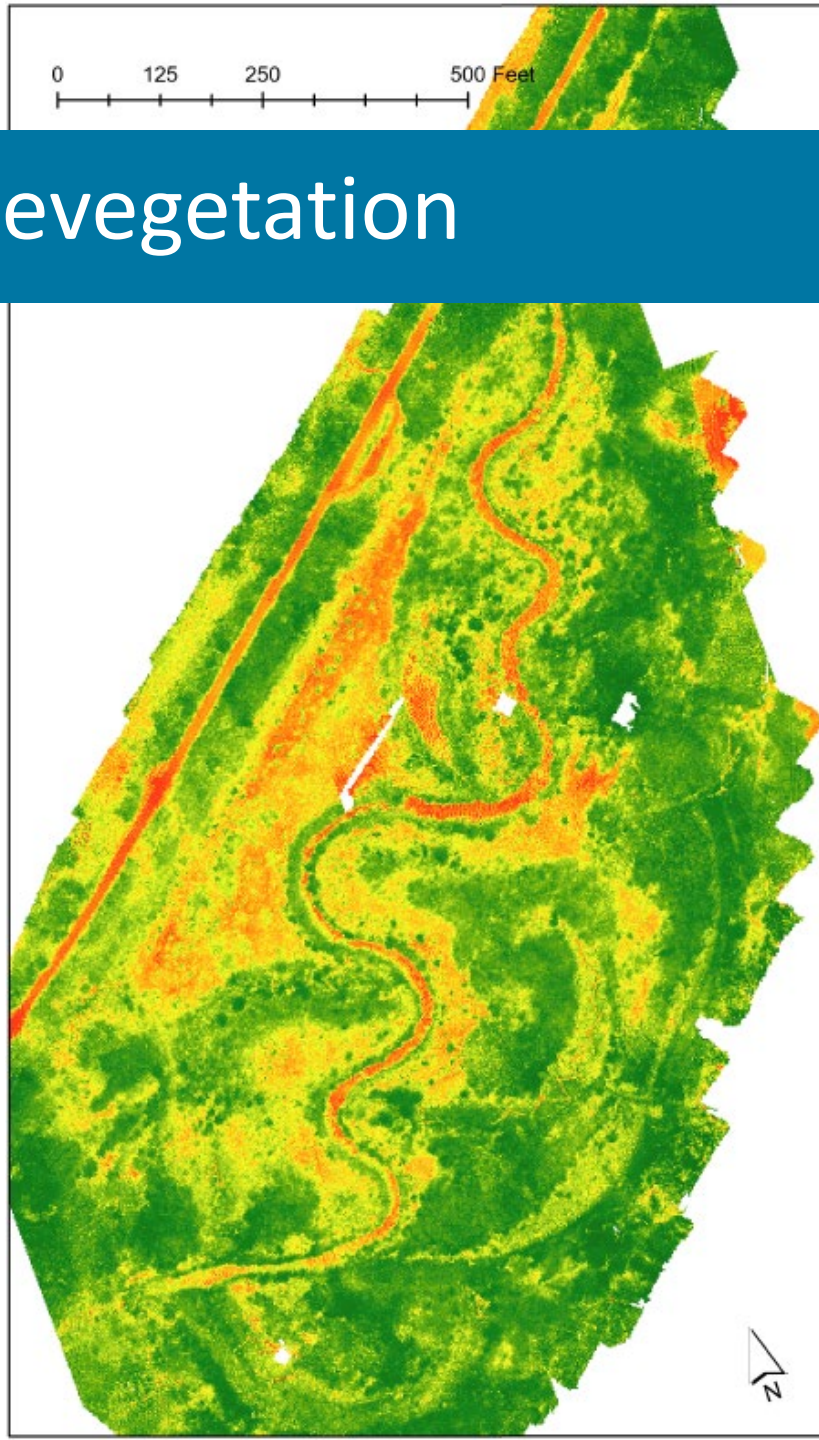
# Luther Road

NAIP Timelapse

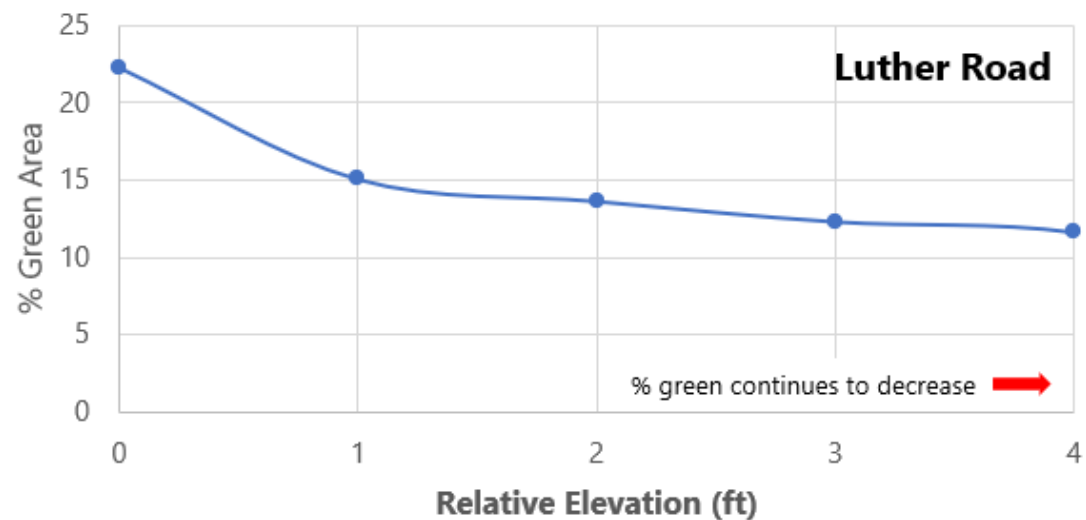
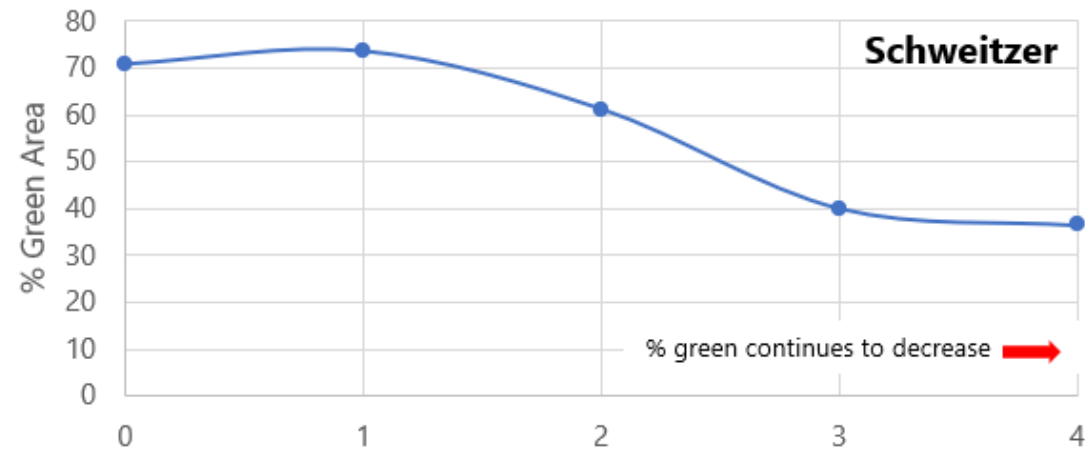




# Revegetation

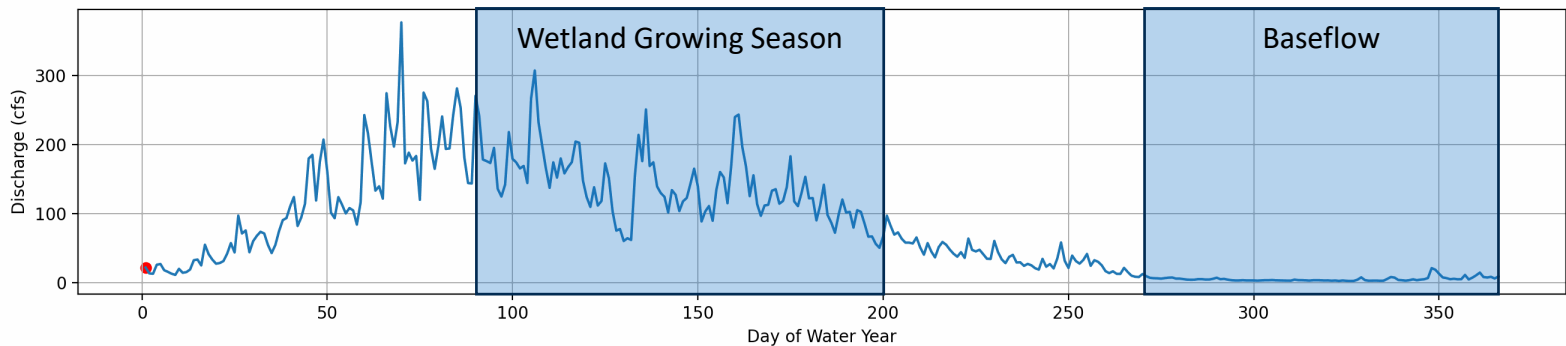
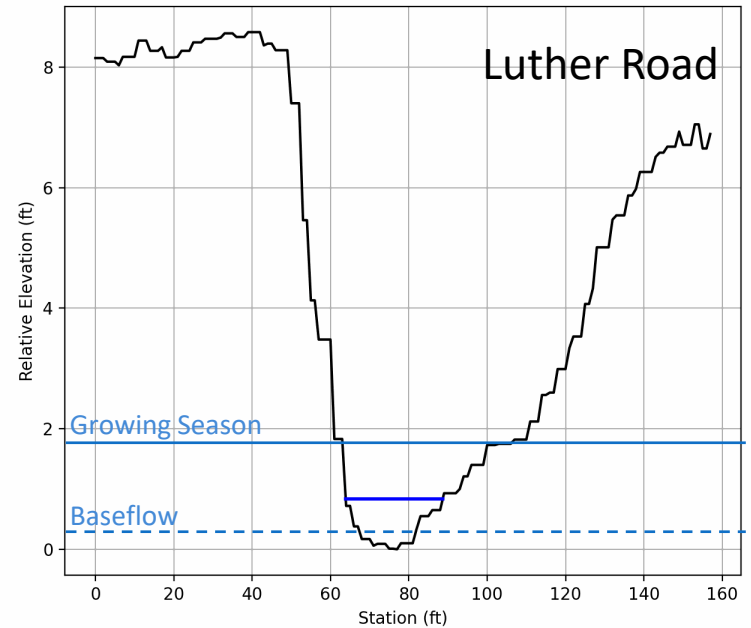
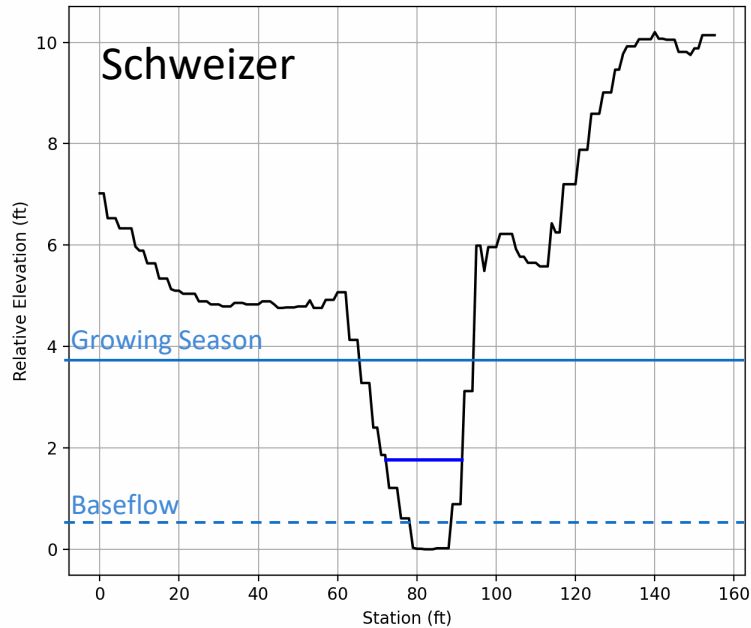


# Revegetation





# Hydrology



An aerial photograph of a winding creek, identified as Johnson Creek, flowing through a landscape of mixed vegetation including grasses, shrubs, and trees. The riparian zone is highlighted with an orange overlay. In the upper right, a building is visible. The overall scene shows a natural, somewhat undeveloped waterway.

# Conclusions

The riparian zone of Johnson Creek is generally within 2-4 feet of low water, but geomorphic setting matters!

When regular floodplain reengagement is not possible, reduced bank slopes can generate the most robust and extensive riparian corridor.

