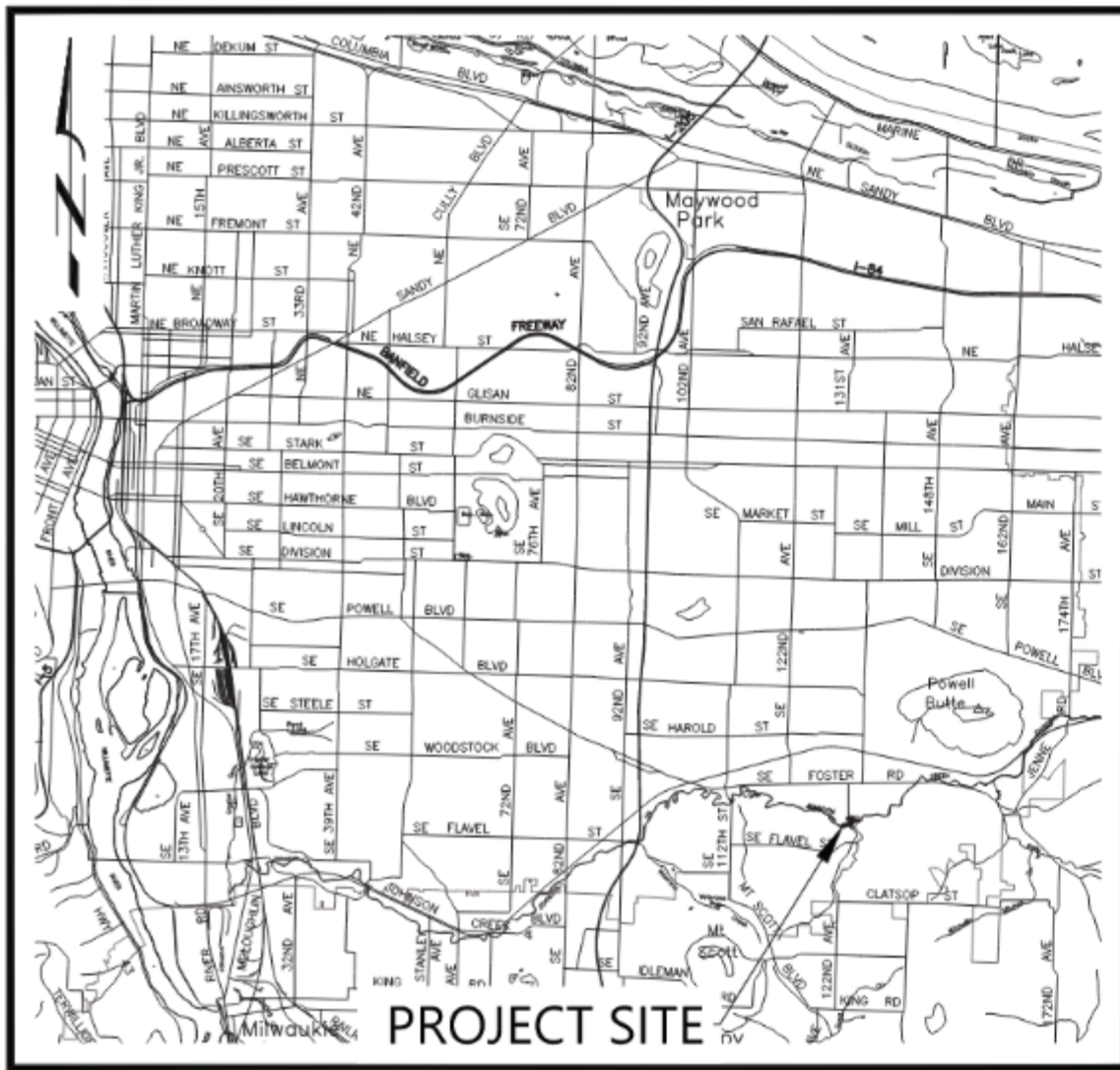




Johnson Creek Watershed Council Science Symposium: October 21, 2025

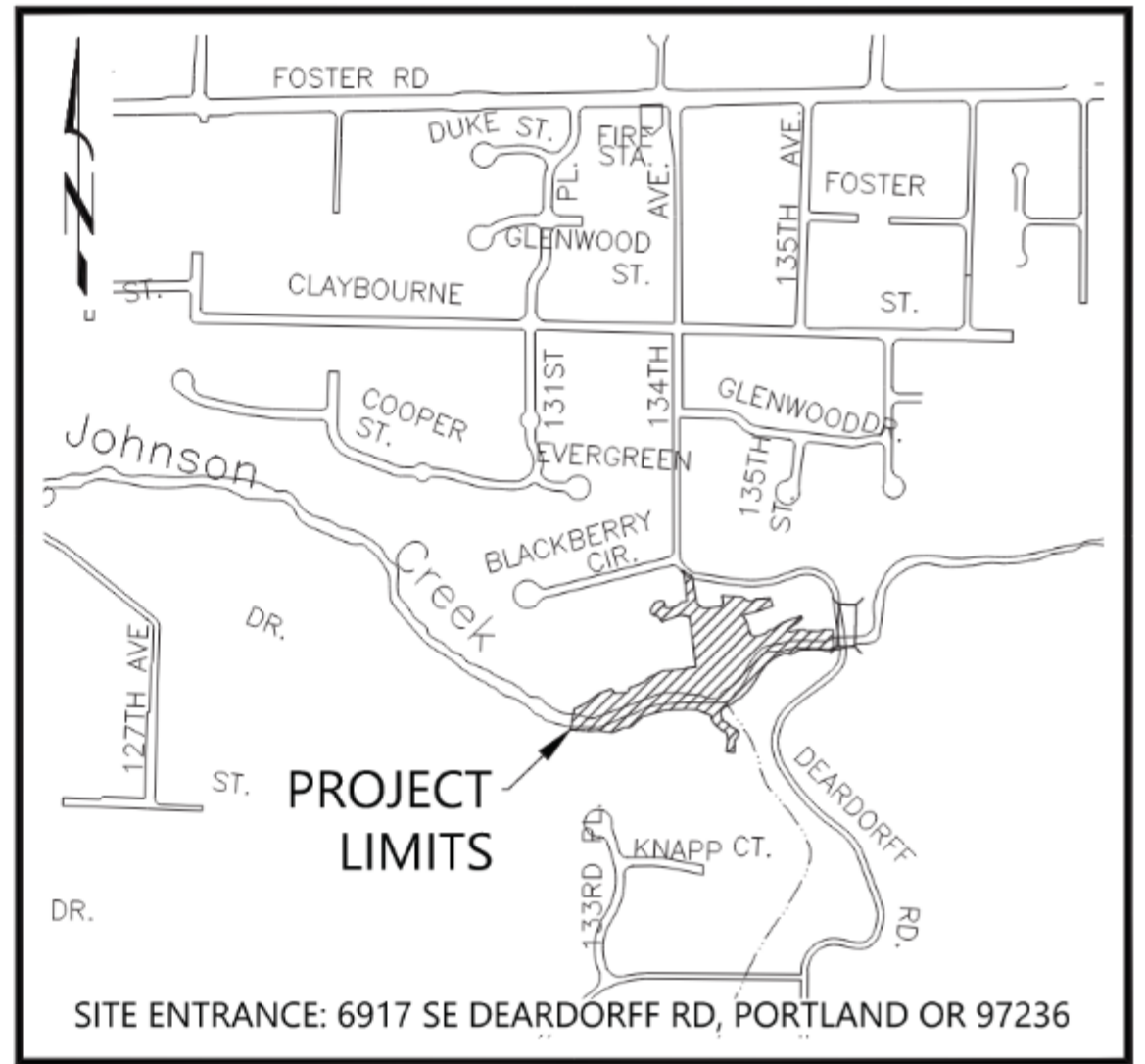
Cedar Crossing Stream Restoration (City of Portland Bureau of Environmental Services)





VICINITY MAP

SCALE: 1" = 6000'



PROJECT MAP

SCALE: 1" = 400'

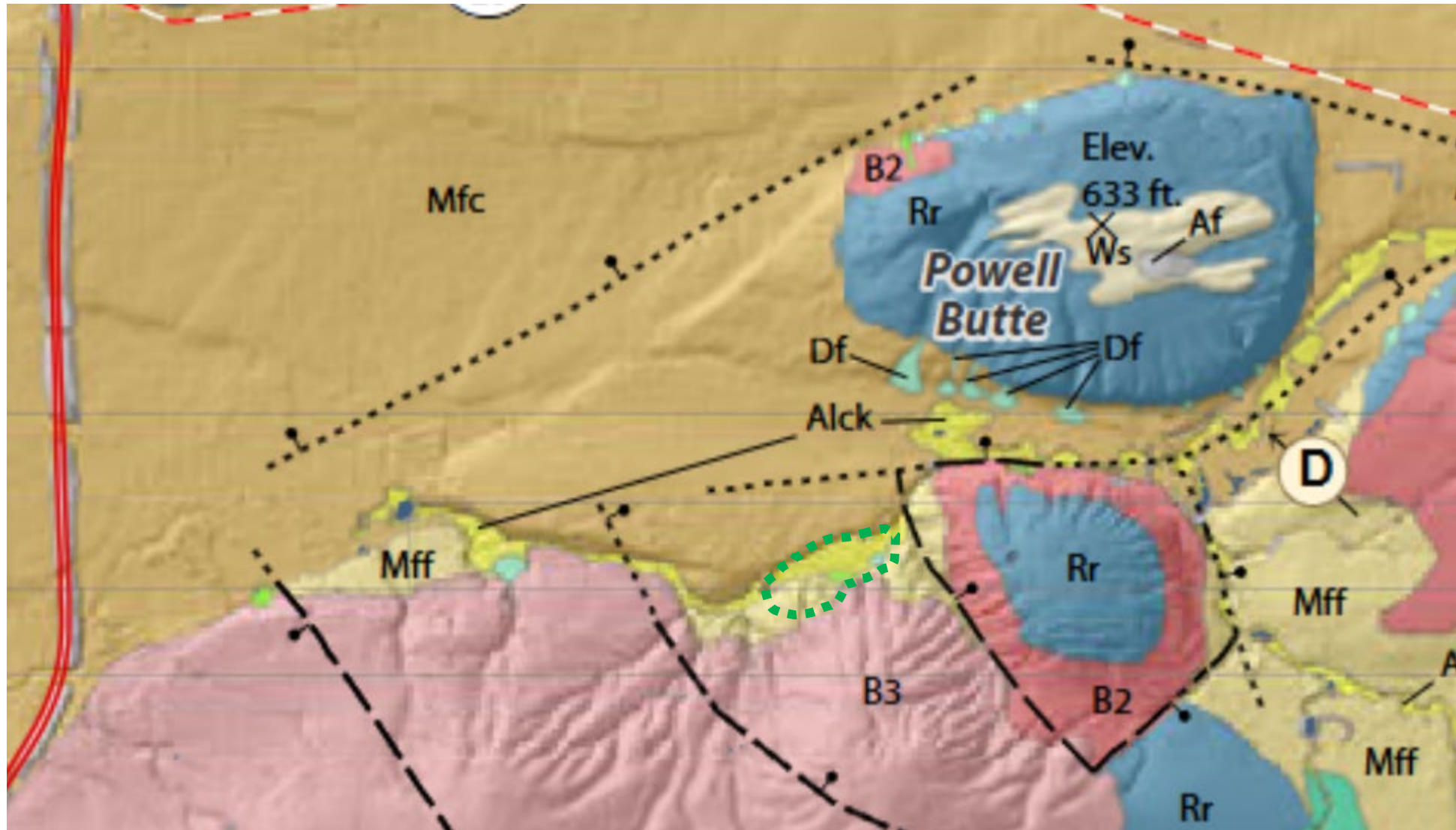
Where/what is Cedar Crossing?



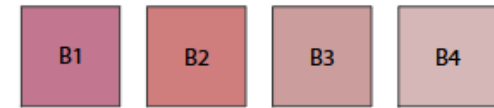
Where/what is Cedar Crossing?



Geology!



Boring Volcanoes



Missoula Flood Deposits



Alluvium



Site History



- Works Progress Administration (WPA)
- Flood Control Project
- Increase conveyance?



- Channel over-widened
- Confined within rock walls
- Sediment and wood cleaned out by USACE until the 80s
- Bed features in lower 700 feet homogenous



Project Goals

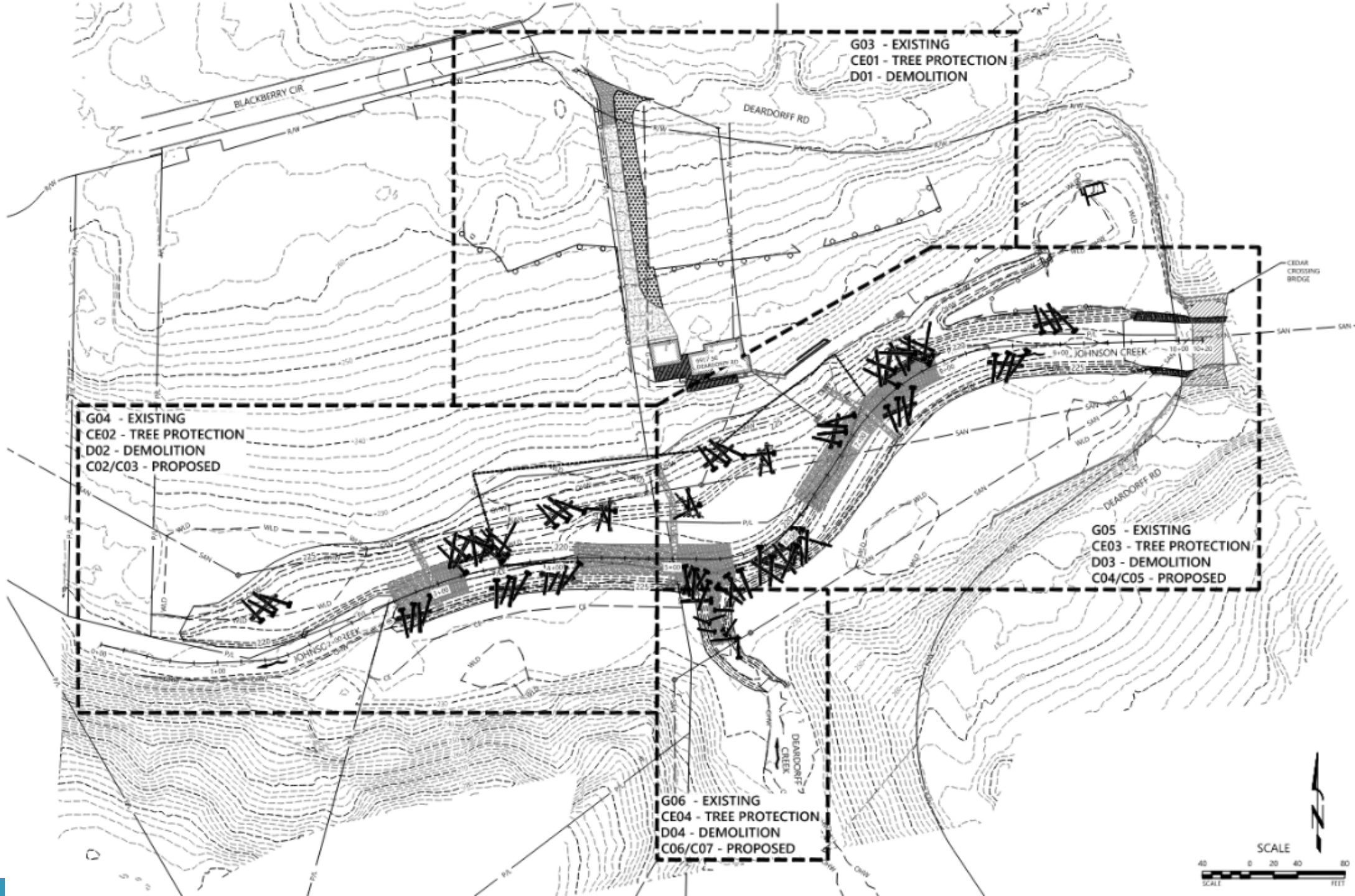


Final Design

- Add heterogeneity to the creek corridor – constructed riffles and pools, large wood installation (> 120 pieces!)
- Reconnect the floodplain – constructed riffles and pools + floodplain excavation
- Add salmonid habitat – pool depth, large woody material, spawning gravels
- Save as many trees as possible – arborist consultation/observation, careful soil lift construction

INDEX NOTES

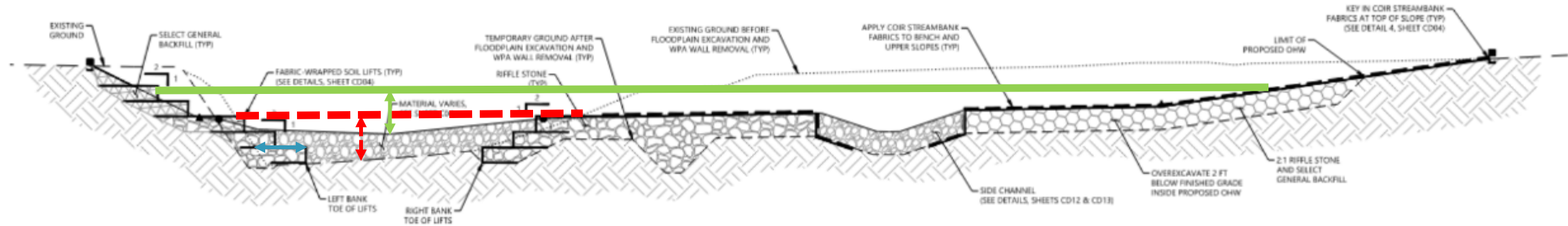
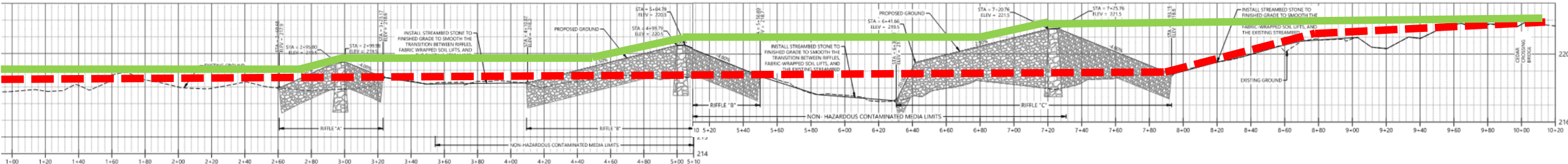
1. FOR CLARITY, TREE LOCATIONS AND NUMBERS CAN BE VIEWED IN SHEETS C18-C20, WITH ACCOMPANYING TABLES ON SHEETS C22-C23



Vertical and Horizontal Complexity

We Can Do That!

Vertical variability
 Deeper, smaller low flow
 Much larger high-flow floodplain access



Fish Salvage



Total=1,309

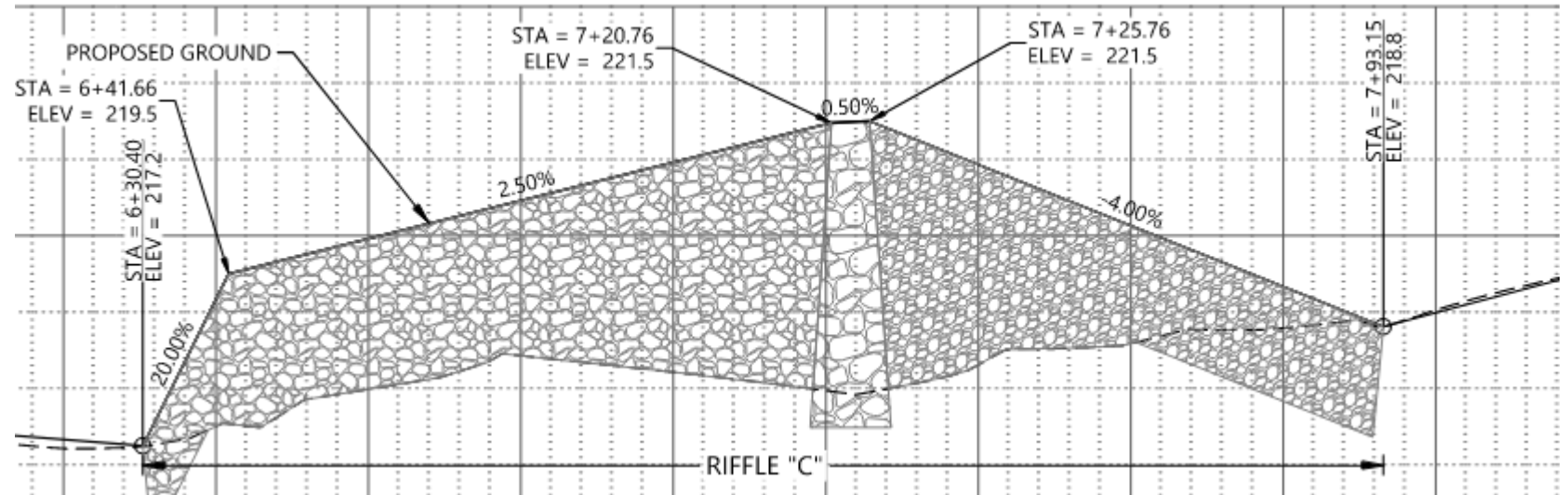
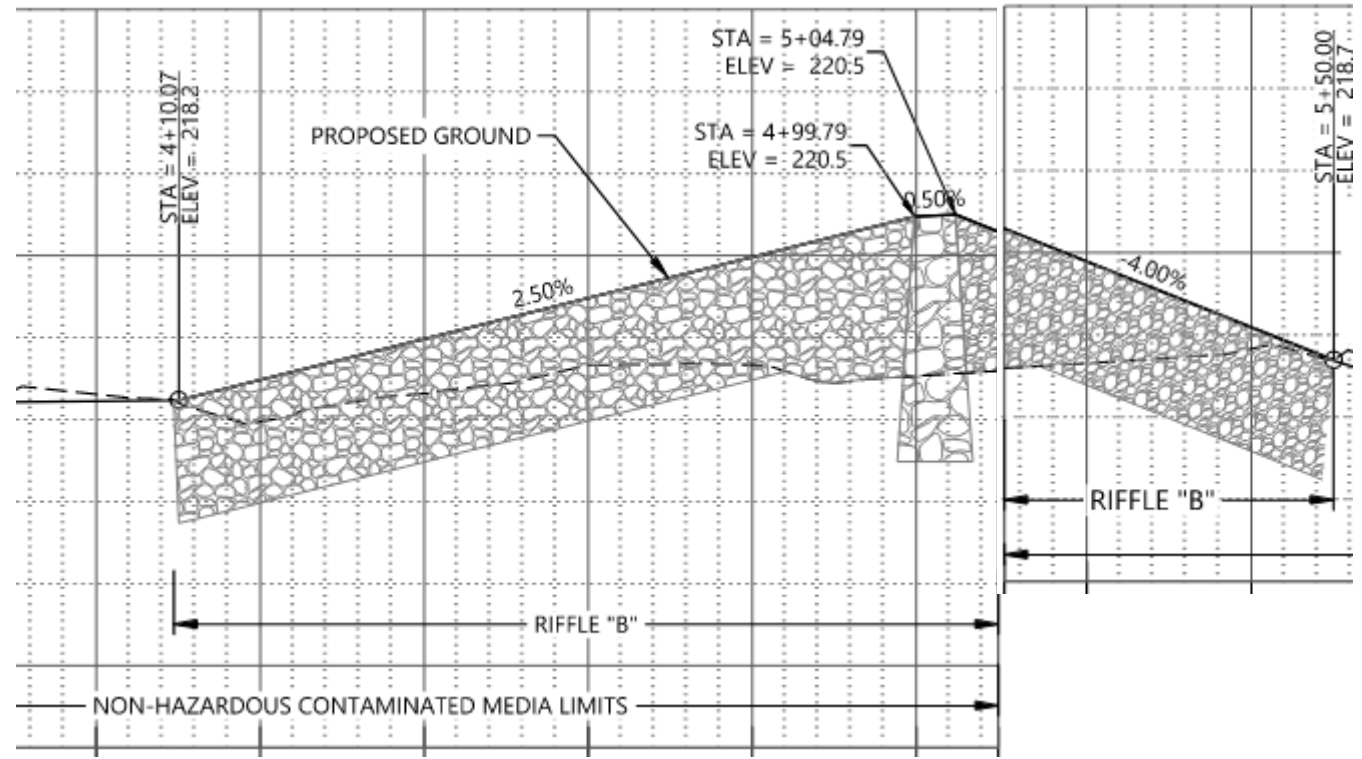
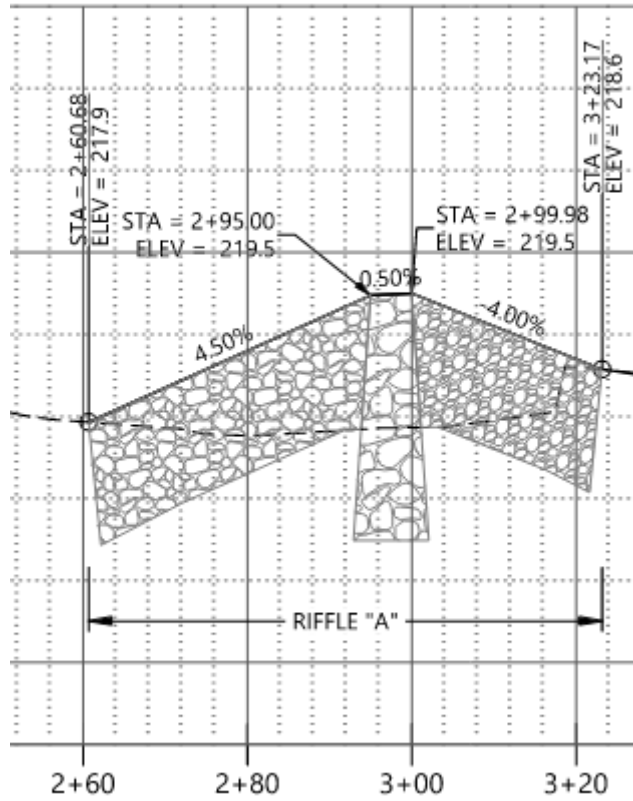
Lower Columbia River Coho
Salmon: 3
Reticulate Sculpin: 573
Speckled Dace: 79
Redside Shiner: 179

Western Brook Lamprey: 4
Pacific Lamprey ammocetes: 14
Unidentified lamprey: 9
Steelhead/Rainbow Trout: 7
Largescale Sucker: 3

Signal Crayfish: 424
Gambusia: 10
Pumpkinseed: 4







Heterogeneity to the Streambed – Riffle C



Heterogeneity to the Streambed – Riffle B



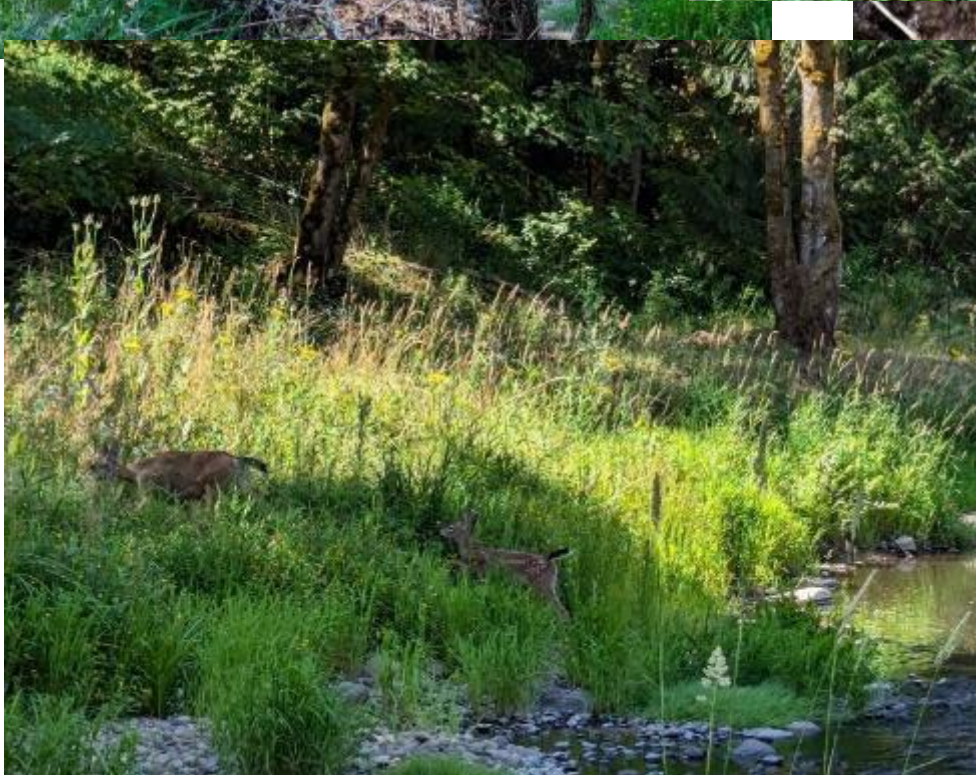
Heterogeneity to the Streambed – Riffle A





Geomorphology -> Habitat





Terrestrial

Aquatic



New Fish Counts by BES
this year!

Macroinvertebrate survey
by City of Gresham this
year!



Lower Columbia River Coho
Salmon: 3?
Reticulate Sculpin: 573?
Speckled Dace: 79?
Redside Shiner: 179?

Western Brook Lamprey: 4?
Pacific Lamprey ammocetes: 14?
Unidentified lamprey: 9?
Steelhead/Rainbow Trout: 7?
Largescale Sucker: 3?

Signal Crayfish: 424?
Gambusia: 10?
Pumpkinseed: 4?

